



PALACE ROAD, SW2

£500,000

Two double bedrooms

Victoria conversion

First floor

Circa 900sqft

Chain free

EPC: D

@marshandparsons
marshandparsons.co.uk

MARSH &
PARSONS

ABOUT THE PROPERTY

A Victorian, two double bedroom, first floor flat, situated on a quiet desirable road. The property offers a generous dining and kitchen space, that leads onto a bright living room, accompanied with two large double bedrooms unlike most two bedroom flats.

Palace Road is well located for the amenities of Streatham Hill and Brixton. There are numerous bus services which provide access to Brixton Underground for the Victoria Line. Tulse Hill station is just a short walk away, providing swift access into both London Bridge and London Victoria, and is also only one stop away from Balham where you can access the Northern Line.

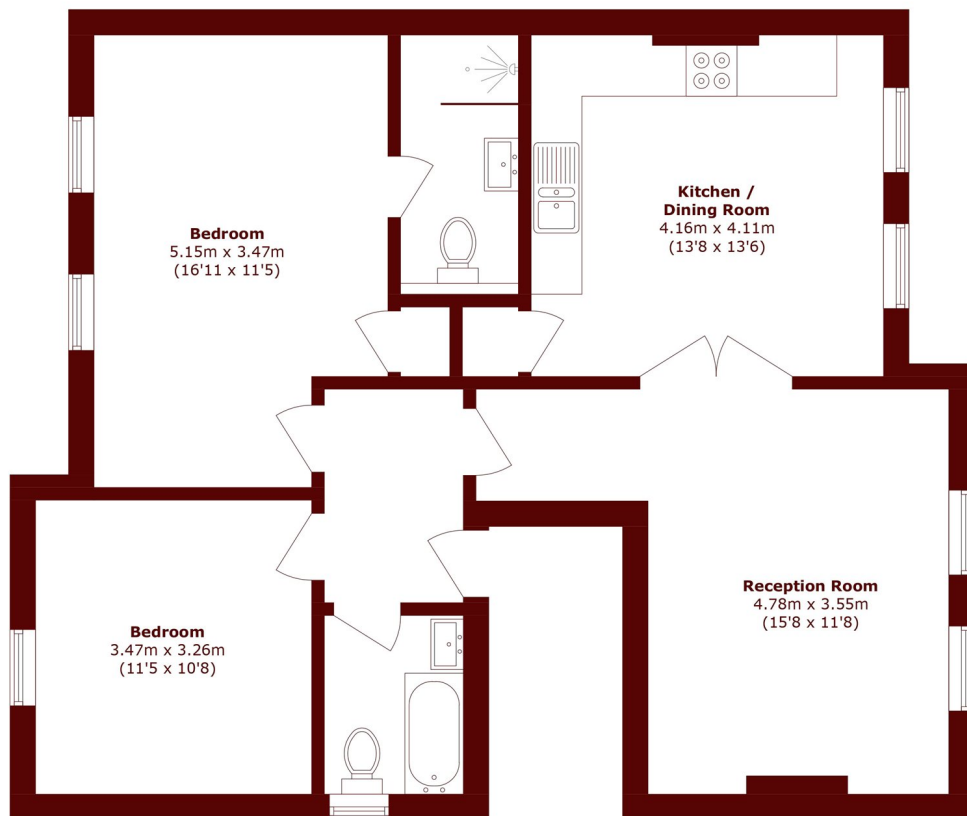








STEP INSIDE PALACE ROAD



Total area (approx.): 82.3 sq. m (885.9 sq. ft)

Streatham
020 8671 0171

Energy Rating: We aim to make our particulars both accurate and reliable. However, they are not guaranteed; nor do they form part of an offer or contract. If you require clarification on any points then please contact us, especially if you're traveling some distance to view. Please note that appliances and heating systems have not been tested and therefore no warranties can be given as to their good working order

**MARSH &
PARSONS**