



Cleveland Gardens, W2

£1,000,000

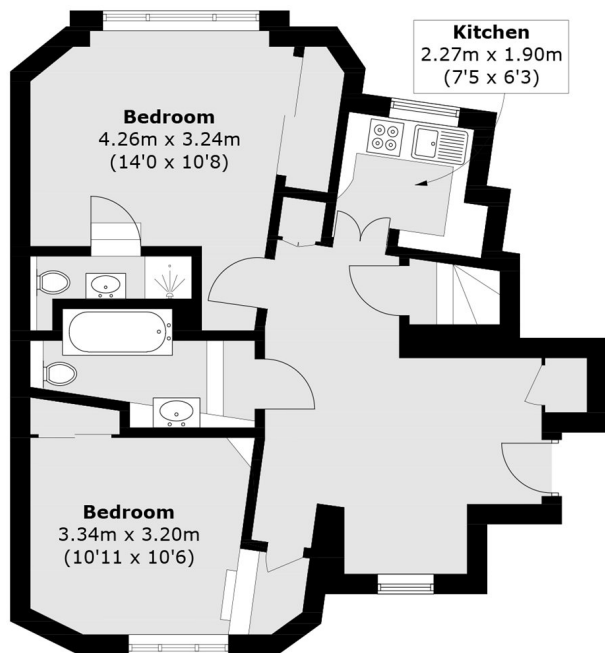
A spacious split-level apartment on the raised and first floor of a white stucco fronted building, with access to a beautifully manicured garden square. The property has two bedrooms, two bathrooms (one en suite), a separate kitchen and a triple aspect reception room with a wraparound balcony.

Cleveland Gardens is a sought after address, centrally located for all underground stations between Hyde Park, Bayswater, Lancaster Gate and Paddington, including Paddington mainline (Network rail and Heathrow Express). It is also a short walk to the vast ground of Kensington Gardens and Hyde Park.

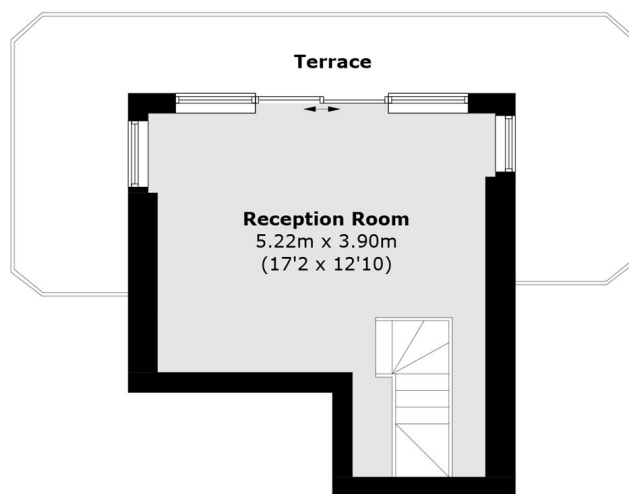
Features

- Wraparound Balcony
- Two Double Bedrooms.
- Two Bathrooms
- Triple Aspect Reception
- Access To Garden Squares
- Prime Location

Cleveland Gardens, London, W2



Ground Floor



First Floor

Total area (approx.): 82.1 sq. m (883.7 sq. ft)
Terrace: 20.7 sq. m (222.8 sq. ft)