

**2 Millwood Cottages Old Neighbourhood, Chalford, Stroud, Gloucestershire, GL6 8AA**

Cotswold stone period cottage  
Well-presented with characterful features  
2 double bedrooms  
Modern fitted kitchen  
Fireplace with wood-burning stove  
Superb views over the Golden Valley  
Private off-street parking  
Garden backing onto fields  
Charming setting



01666 840 886  
jamespyle.co.uk



The Barn, Swan Barton, Sherston, Wiltshire, SN16 0LJ  
James Pyle Ltd trading as James Pyle & Co. Registered in England & Wales No: 10927906

**Guide Price: £385,000**

Approximately 935 sq.ft



‘Occupying a charming setting on the edge of Chalford village with panoramic views over the Golden Valley, a characterful Cotswold stone period cottage with lovely features’

### The Property

Commanding a spectacular position on the edge of Chalford village, this charming Cotswold stone period cottage at 2 Millwood Cottages enjoys far-reaching views over the Golden Valley. Believed to date back to the 17th Century, this beautifully presented home retains much of its wonderful period character.

Entered through an oak-framed porch, the ground floor opens into an inviting open plan kitchen/reception area, with a glazed rear door beautifully framing the superb view. The kitchen is thoughtfully fitted with modern units and equipped with a range of integrated appliances. The sitting area features an exposed stone fireplace, complete with a cosy wood-burning stove at its heart. On the first floor, a bathroom sits beside a comfortable double bedroom. The top floor offers another spacious double bedroom, showcasing beautiful exposed beams and a large window

providing panoramic views. This floor also benefits from a generous walk-in storeroom adjoining the bedroom.

The cottage boasts the excellent advantage of private off-street parking across a front driveway. The rear garden is a genuine delight, backing onto fields with a desirable south-east aspect. This area has been thoughtfully designed for low maintenance as a gravelled terrace with raised borders, creating an ideal setting for outdoor entertaining.

### Situation

The property is situated on the edge of the village of Chalford, a thriving Cotswold village surrounded by a rolling Cotswold landscape enjoying lovely views and many country walks. Chalford is an age-old Cotswold village nestling in the 'Golden Valley' showing much of its heritage from the wealthy woollen era of the 17th & 18th Centuries. Together with its neighbouring villages, Chalford forms an

excellent community with post office/stores, various local shops, popular primary schooling and the Kings Head pub whilst within walking distance is the highly regarded Lavender Bakehouse coffee shop. The property is readily accessible to Stroud and Cirencester where there are more comprehensive facilities and services. Fast trains to London Paddington are available from nearby Kemble and Stroud train stations. The property is within walking distance to Chalford Hill Primary School whilst private education is available at Beaudesert Park, Wycliffe and Westonbirt School. Cheltenham and Gloucester are also easily commutable, as is access to both the M4 and M5.

### Additional Information

The property is Freehold with mains gas, drainage, water and electricity. The property is located within the Cotswold Area of Outstanding Natural Beauty. Ultrafast broadband is available. Information taken

from the Ofcom mobile and broadband checker, please see the website for more information and mobile phone coverage. Stroud District Council Tax Band C.

### Directions

From the A419, ascend Old Neighbourhood towards Chalford. After the s-bend towards the top of the hill, locate the entrance to Millwood Cottages on the right hand side.

Postcode GL6 8AA

What3words: ///stolen.pool.gushes

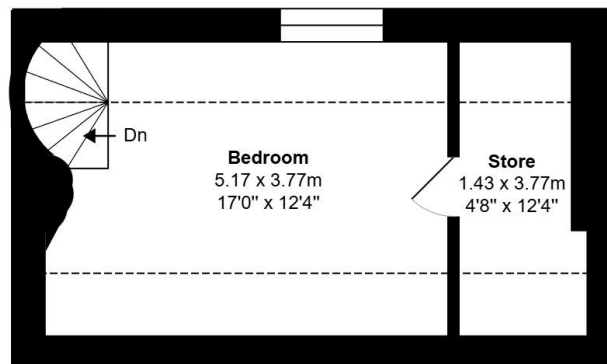


Energy Efficiency Rating		
	Current	Potential
Very energy efficient - lower running costs		
(02-10) <b>A</b>		
(11-15) <b>B</b>		
(16-20) <b>C</b>		79
(21-25) <b>D</b>	61	
(26-30) <b>E</b>		
(31-35) <b>F</b>		
(36-50) <b>G</b>		
Not energy efficient - higher running costs		
England & Wales	EU Directive 2002/91/EC	

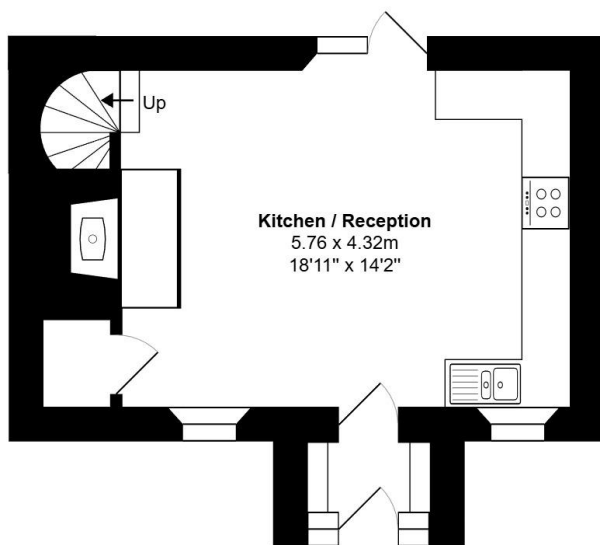


Total Area: 86.9 m<sup>2</sup> ... 935 ft<sup>2</sup>

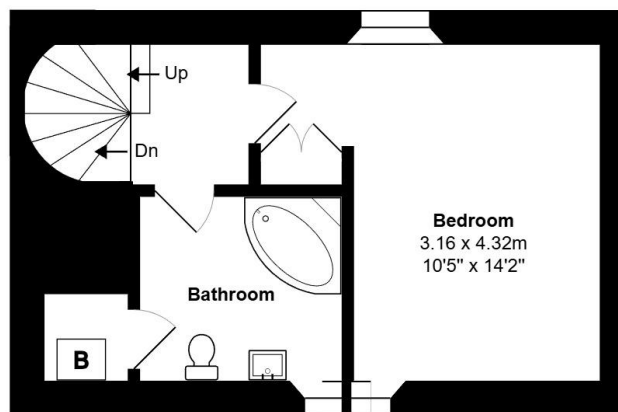
All measurements are approximate and for display purposes only



Second Floor



Ground Floor



First Floor



James Pyle Holdings Ltd and any parties they are acting for hereby give notice that these details are for guidance only and cannot guarantee accuracy of any description, dimension, condition or any required permission for occupation and use. It is not company policy to test any services or appliances in properties offered for sale and these should be verified by the purchaser's solicitors. James Pyle Holdings Ltd will not be liable for any loss arising from the use of these details. No responsibility is taken for any errors, omissions or misstatements within these particulars. It should not be assumed that the property has all the necessary planning, building regulation or other consents. These particulars do not form any part of any offer or contract and must not be relied upon as statements or representations of fact. James Pyle & Co is a trading name of James Pyle Holdings Ltd, registered in England & Wales. Registered number 10927906

COTSWOLD & COUNTY (HEAD OFFICE)

The Barn, Swan Barton, Sherston SN16 0LJ

01666 840 886 or 01452 812 054

LONDON (ASSOCIATE OFFICE)

121 Park Lane, Mayfair W1k 7AG

0207 0791 577