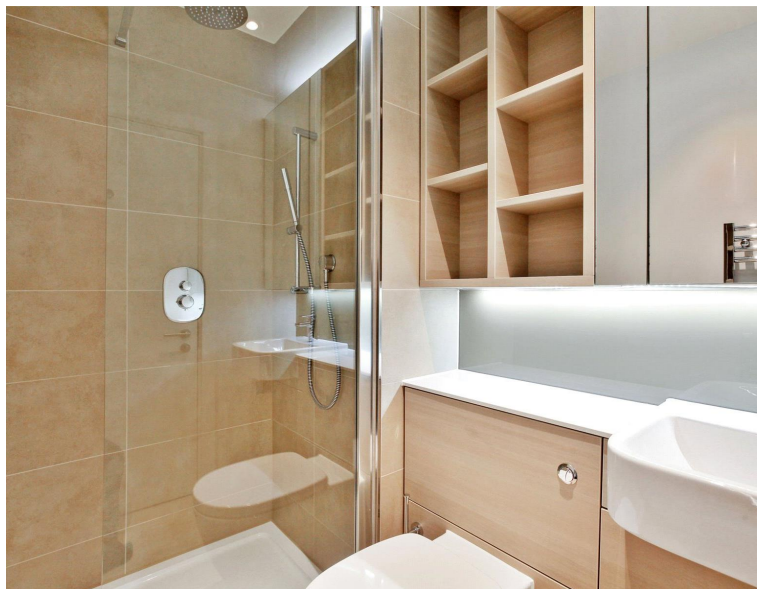
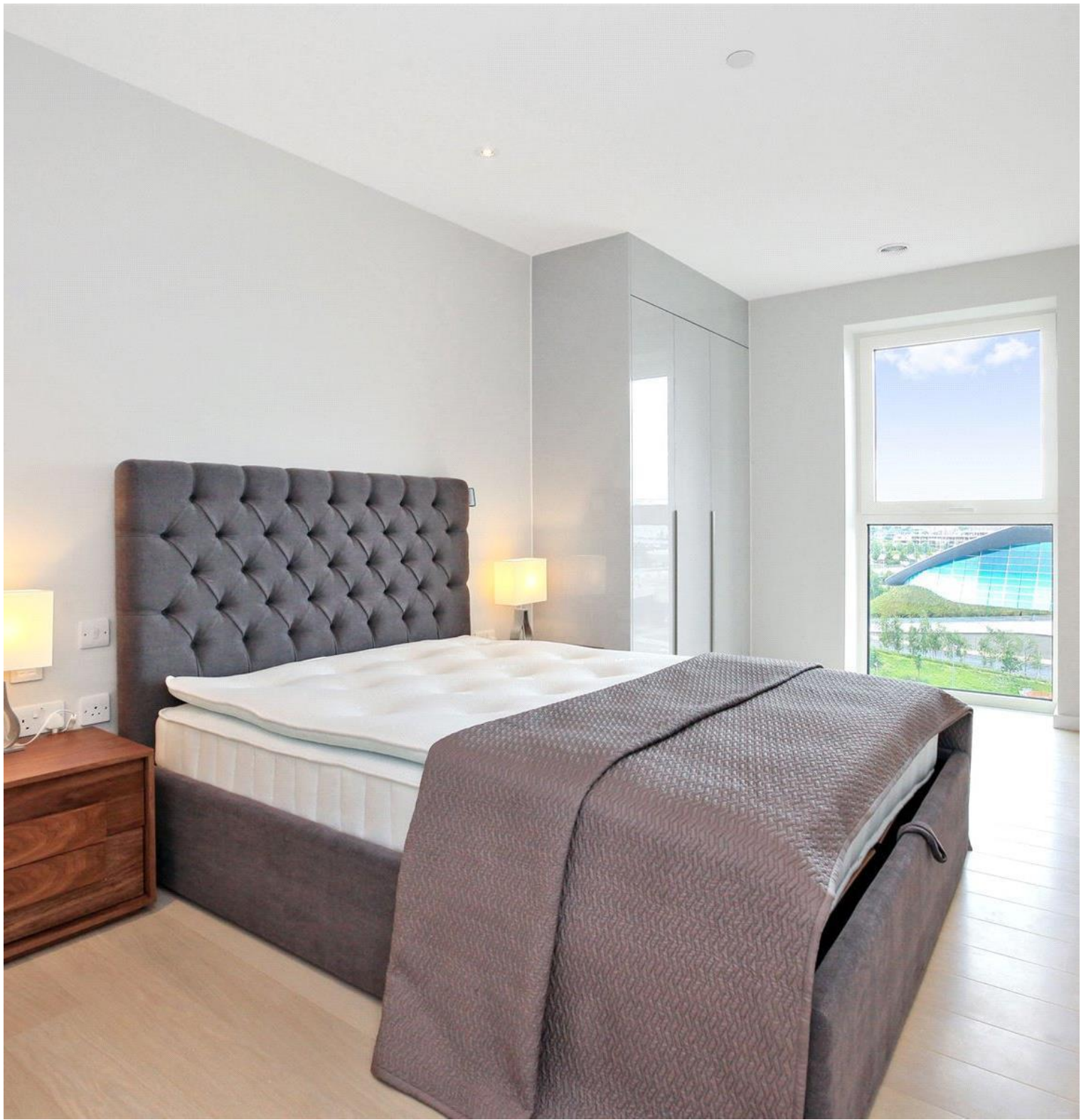




Glasshouse Gardens, London E20

£675,000 Leasehold







Description

Positioned in the heart of Stratford's dynamic Queen Elizabeth Olympic Park, Glasshouse Gardens represents contemporary urban living at its finest. This exceptional two-bedroom, two-bathroom apartment occupies the development's most sought-after aspect, commanding spectacular panoramic views across London Stadium and the sweeping city skyline beyond. The elevated position ensures abundant natural light floods the carefully designed interior throughout the day.

Extending to approximately 831 square feet, the apartment features a thoughtfully conceived open-plan reception and kitchen area that flows seamlessly onto a generous private balcony—an exceptional outdoor space perfect for entertaining or quiet contemplation while enjoying those remarkable views. The modern kitchen is appointed with integrated appliances and sleek contemporary finishes that complement the apartment's refined aesthetic. Both double bedrooms offer comfortable proportions, served by two well-appointed bathrooms that complete this sophisticated residence.

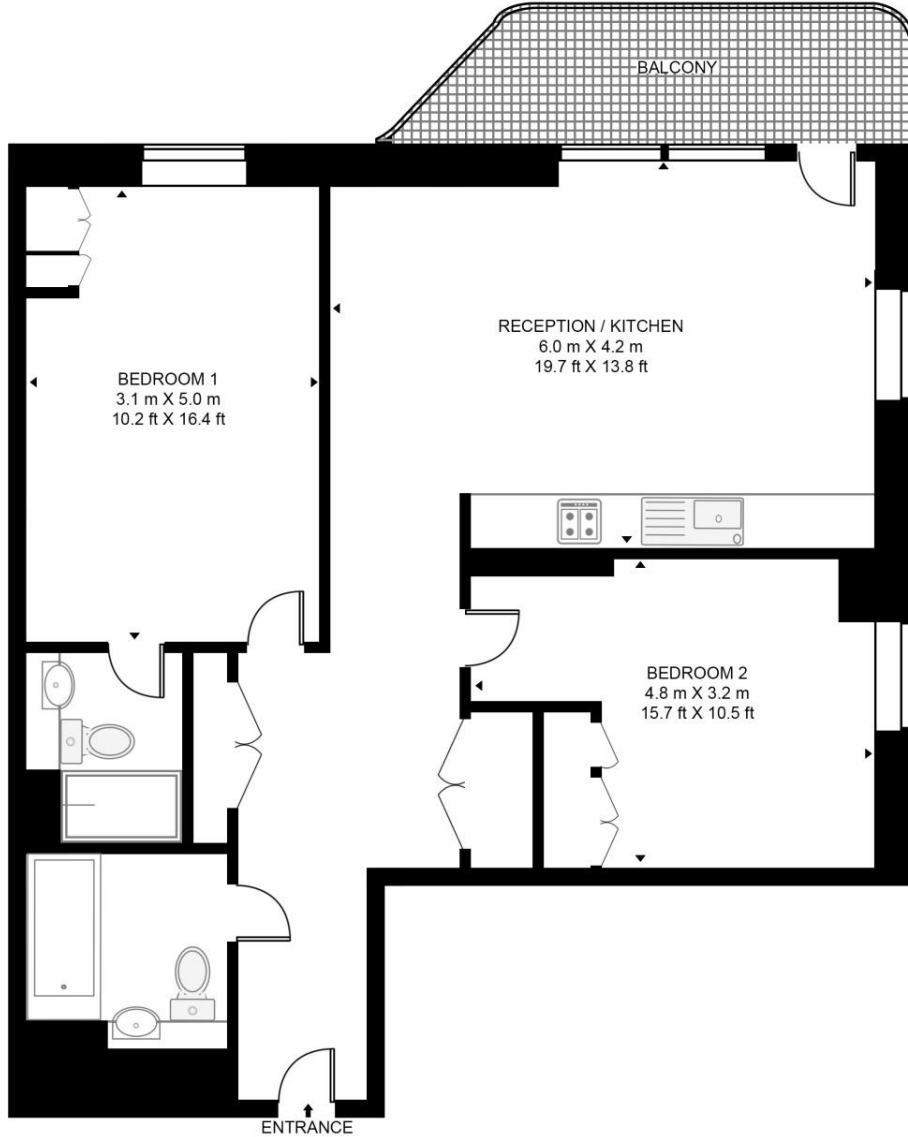
- Premium Olympic Park living
- London Stadium views
- Sweeping city skyline
- 24-hour concierge service
- Resident's gymnasium
- Expansive private balcony
- Stratford transport hub
- Westfield shopping adjacent
- Queen Elizabeth Park setting
- EPC Rating B

Floorplan

831 sq ft | 77 sq m

CASSIA POINT

APPROXIMATE GROSS INTERNAL FLOOR AREA 831 SQ.FT (77.2 SQ.M)



This floor plan has been defined by the RICS Code of Measurement. This floor plan and all others are for approximate representative purposes only and upon usage is agreed to as such by the client.

WWW: hdvirtualart.com | TEL: 0203.974.1567 | EMAIL: info@hdvirtualart.com

Stratford
5 Station Street,
London E15 1DA
+4420 3147 1500
Lettingsstratford@eu.jll.com

Urban living, your way.

jll.co.uk/residential

© 2019 Jones Lang LaSalle IP, Inc. All rights reserved. All information contained herein is from sources deemed reliable; however, no representation or warranty is made to the accuracy thereof.

