

Total area: approx. 66.7 sq. metres (717.8 sq. feet)

Total Area Approx sq ft



20a Wellington Road, Brighton, BN2 3AA

To view, contact John Hilton:
52 High Street, Rottingdean, BN2 7HF
132-135 Lewes Road, Brighton, BN2 3LG
01273 608151 or sales@johnhiltons.co.uk

PCM £1,500 PCM

20a Wellington Road, Brighton, BN2

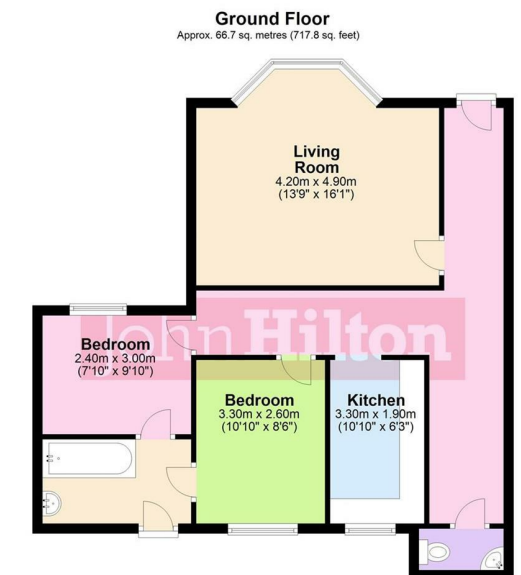
3AA

- * A two double bedroom lower ground-floor flat
- * Perfect for professional sharers or a family
- * Available 1st September 2026 (flexible if needed sooner)
- * Large living room and separate kitchen
- * Situated just off Elm Grove
- * Close to local shops and amenities
- * On-street parking - permitted area
- * Council Tax band A

* A holding deposit will be required to secure the Property which is equivalent to 1 week's rent £346.15

Once referencing is complete the Holding Deposit will go towards the first month's rent on move-in

* The above details are intended for information purposes only and do not constitute an offer or form part of a contract. A tenancy will be granted subject to referencing and contracts..



Total area: approx. 66.7 sq. metres (717.8 sq. feet)

- * A two double bedroom lower ground-floor flat
- * Perfect for professional sharers or a family
- * Available 1st September 2026 (flexible if needed sooner)
- * Large living room and separate kitchen
- * Situated just off Elm Grove
- * On-street parking - permitted area
- * Council Tax band A

Energy Efficiency Rating		Current	Potential
Very energy efficient - lower running costs			
(92 plus) A			
(81-91) B			
(69-80) C			
(55-68) D		60	74
(39-54) E			
(21-38) F			
(1-20) G			
Not energy efficient - higher running costs			
England & Wales		EU Directive 2002/91/EC	

Council Tax Band: **A**