



Gladwin Tower, 50 Wandsworth Road

, London SW8 2FA

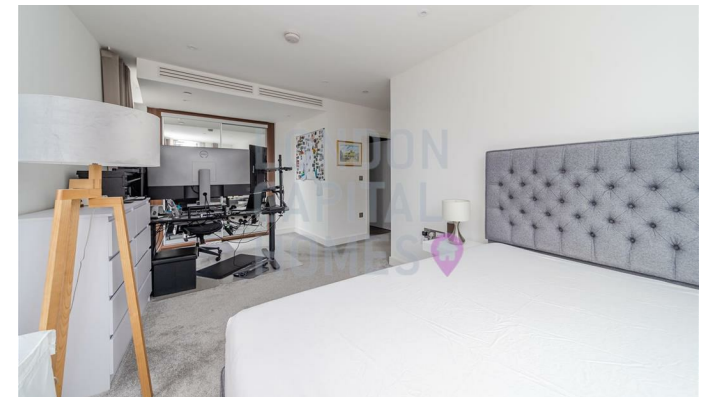
- 24-hour concierge service
 - Private cinema room
- Landscaped private gardens
 - On-site Sainsbury's
 - CTB-F
- Fully equipped residents' gym
 - Residents' dining suite
- Secure entry system and lift access
 - EPC-B

£3,800 Per Month

Local Authority **Lambeth**
Council Tax Band **F**
EPC Rating **B**



Kitchen
11'7" x 7'9" (358 x 239cm)
Living/Dining
11'9" x 11'7" (359 x 358cm)
Bedroom 1
11'7" x 10'0" (353 x 305cm)
Bedroom 2
11'0" x 11'2" (335 x 341cm)
Bedroom 3
11'0" x 11'2" (335 x 341cm)
Bathroom
6'2" x 7'0" (188 x 213cm)
Shower Room
6'0" x 6'2" (183 x 188cm)
SOCIAL AREA
11'0" x 5'0" (335 x 152cm)
Hallway
11'4" x 5'0" (349 x 152cm)



London Office Office

Spaces Victoria, 25 Wilton Road, Pimlico,
London, SW1V 1LW

Contact

020 3084 3094
XL@londonvictoriagroups.co.uk
www.londonvictoriagroups.co.uk

Agents Note: Whilst every care has been taken to prepare these particulars, they are for guidance purposes only. All measurements are approximate and for general guidance purposes only and whilst every care has been taken to ensure accuracy, they should not be relied upon and potential buyers/tenants are advised to recheck the measurements.