



Mildmay Grove South

Islington, N1

Asking Price £700,000

A bright and spacious 2 double bedroom apartment set on the raised ground floor of an attractive Victorian end of terrace house and within the Newington Green conservation area.

CHESTERTONS



Mildmay Grove South

Islington, N1

- 2 double bedrooms
- Victorian end of terraced house
- Private garden
- Living space flooded with light
- Superb access to Newington Green
- Transport can be found at Dalston Junction & Canonbury stations (London Overground)



A bright and spacious 2 double bedroom apartment set on the raised ground floor of an attractive Victorian end of terrace house and within the Newington Green conservation area. The property is well-proportioned comprising; two double bedrooms; large living space flooded with light from the large windows overlooking the garden; semi-open plan kitchen and direct access to the private garden. Mildmay Grove South sits to the South off Newington Green and falls within the Newington Green conservation area. The property is exceptionally well placed for so much of what the area has to offer, with a plethora of cafes, restaurants and trendy bars found at Dalston and Kingsland Road to the East, Stoke Newington to the North and Newington Green around the corner, with the delightful greenery of Clissold Park just a short stroll. Transport can be found at Dalston Kingsland, Dalston Junction, Canonbury Station (London Overground) and Stoke Newington station (trains to Liverpool Street), with a number of bus routes running on Green Lanes and Newington Green Road.

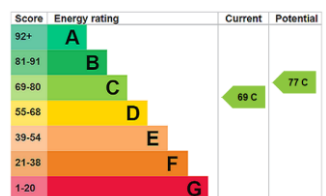
Tenure: Leasehold 149 years 9 months

Service Charge: £1733

Ground Rent: £200 The ground rent will increase to a max of £300 in 2047

Local Authority: Islington

Council Tax Band: E



Chestertons Islington Sales

327-329 Upper Street

Islington

London

N1 2XQ

islington@chestertons.co.uk

020 7359 9777

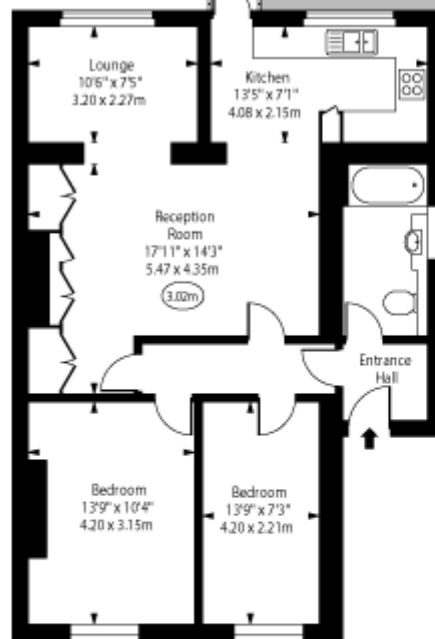
chestertons.co.uk

Mildmay Grove South,
Islington, N1



○ - Ceiling Height

Garden
34'3" x 13'3"
10.45 x 4.05m
(approximate)



Ground Floor

Approx Gross Internal Area 883 Sq Ft - 77.39 Sq M

Every attempt has been made to ensure the accuracy of the floor plan shown. However, all measurements, fixtures, fittings, and data shown are approximate interpretations and for illustrative purposes only. Measured according to the RICS. Not To Scale.
www.goldlens.co.uk
Ref. No. 030743D

