

13a Knoll Street, Market Harborough, LE16 9QR



£400,000

An outstanding RENOVATION/REDEVELOPMENT OPPORTUNITY comes to the market with NO CHAIN through Adams & Jones here with this fantastic bay-fronted detached house, with an ENCLOSED SWIMMING POOL to the rear and DOUBLE GARAGE. Having already had a SUBSTANTIAL TWO-STOREY EXTENSION to the rear, the property could simply be renovated throughout and its swimming pool refurbished to return the property to its former glory. Alternatively, architect plans have been drawn up (please see photographs) to add a car port with a fourth bedroom and additional bathroom over and the opening-up of the kitchen to reception room to form a large open plan living/dining/kitchen. The swimming pool then offers scope for conversion to an outdoor office, gym or a substantial annex amongst many other options.

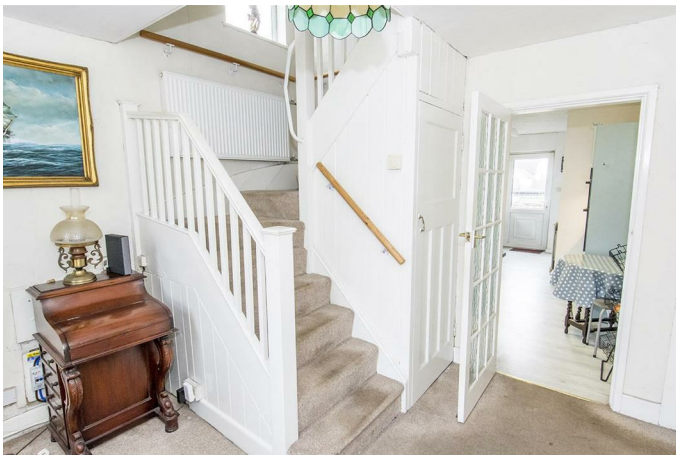
The property is located in a popular established Market Harborough road, with direct alley way access through to the canal toe path and Market Harborough's superb Grand Union Wharf. Existing accommodation briefly comprises; entrance hall, 17'8" kitchen, ground floor shower room, two reception rooms (20'8" and 13'2" respectively), landing, three double bedrooms and bathroom. Outside there is a front garden, driveway to the front with vehicle access gates leading to further driveway leading to the large double garage at the lower end of the garden. The pool room measuring 48'6" x 15'7" houses a heated swimming pool (not tested) requiring renovation and recommissioning.

Service without compromise

Entrance Hallway



Opaque UPVC double-glazed front entrance door. UPVC double-glazed window to front. Understairs storage cupboard. Radiator.



Kitchen 17'8" x 10'0" max / 6'4" min (5.38m x 3.05m max / 1.93m min)



Two UPVC double-glazed windows to side. UPVC double-glazed rear entrance door. Fitted with a range of wall and floor mounted units. Gas hob with extractor hood. Electric double oven. Worktops with one and a half bowl sink inset. Space for fridge/freezer. Space and plumbing for washing machine and dishwasher. Space for dryer. Radiator.





Front Reception 13'2" max into bay x 9'9" (4.01m max into bay x 2.97m)



UPVC double-glazed box bay window to front. Open fire with marble back panel and hearth and timber mantle piece. Radiator.

Back Reception Room 20'8" x 9'9" (6.30m x 2.97m)



UPVC double-glazed French doors to rear. Gas fire to stone fireplace. Two radiators.

Downstairs Shower Room 7'4" x 2'8" (2.24m x 0.81m)



Opaque UPVC double-glazed window to rear. WC. Wash hand basin. Shower cubicle. Tiled walls and floor. Radiator.

Landing



Opaque UPVC double-glazed window to side. Loft access hatch. Radiator.

Bedroom One 20'9" x 9'8" (6.32m x 2.95m)



UPVC double-glazed window to rear with town views. Built in wardrobes. Radiator.

Bedroom Two 17'7" x 9'8" (5.36m x 2.95m)



UPVC double-glazed window to rear with town views. Built in wardrobes. Radiator.

Bedroom Three 11'5" x 10'1" (3.48m x 3.07m)



UPVC double-glazed window to front. Radiator.

Bathroom 9'9" x 4'3" (2.97m x 1.30m)



Opaque UPVC double-glazed window to front. WC. Wash hand basin over storage unit. Panelled bath with shower mixer tap and glazed shower screen. Tiled walls. Heated towel rail.



Front

Walled front garden. Concrete driveway leading to timber double vehicle access gates through to additional driveway and rear garden.

Rear Aspect



Rear Garden



Raised patio to house. Mainly laid to lawn with driveway continuing down the side of the plot leading to the double garage at the lower end.

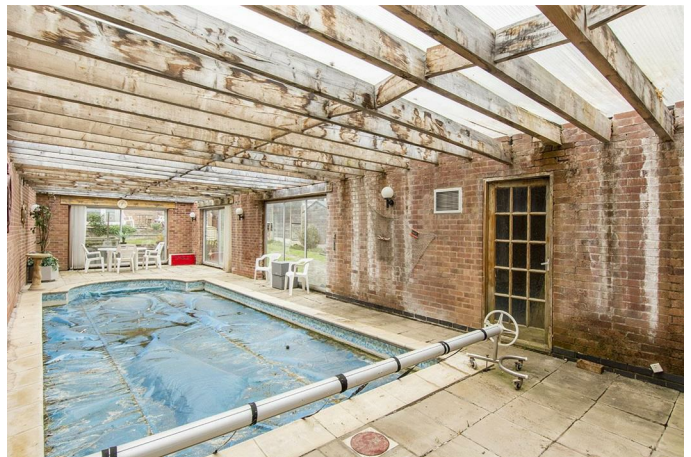




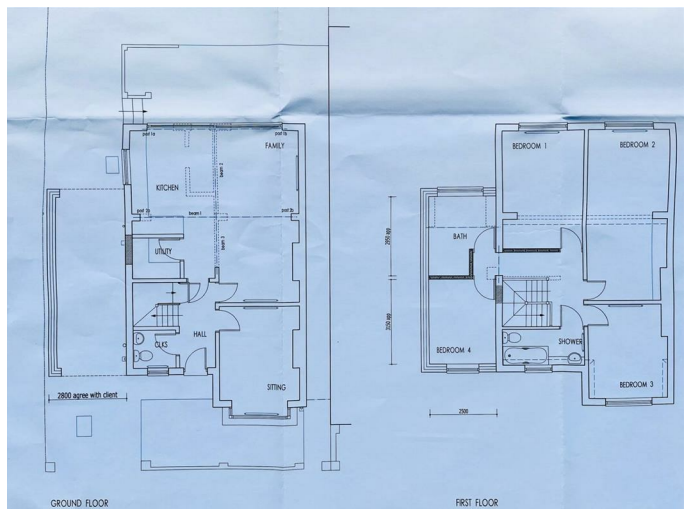
Double Garage 20'0" x 16'8" including partitioned filter room & p (6.10m x 5.08m including partitioned filter room & p)

Double width up and over vehicle access door. Power and light connected. Partitioned pool filter room and pool heater (not tested). Single-glazed side entrance door leading through to pool room.

Pool Room 48'6" x 15'7" (14.78m x 4.75m)



Potential Redevelopment



Transparent roof requiring refurbishment. Two sets of double-glazed sliding patio doors to side and one back towards the house. Range of wall lighting. Heated swimming pool requiring recommissioning.

Plans have been drawn but never submitted for a

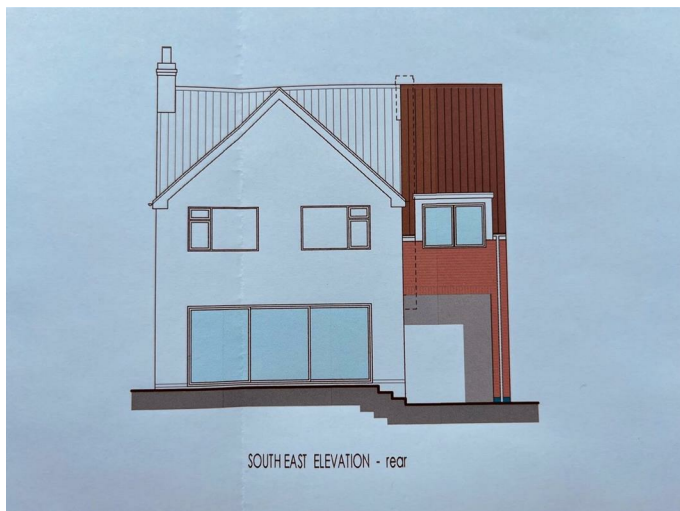


covered vehicle car port added to the side with fourth bedroom and additional bathroom to the first floor above and opening out of the kitchen through to the rear reception room creating a large open living/dining/kitchen. There is also large scope to redevelop the pool room either to take it back to its original glory or to change use for an outdoor office, gym or potential annex. The double garage also adds further development opportunity. Please note: no plans have been submitted or discussed as far as we're aware with the local council and therefore any development plans must be fully subject to planning permission being researched and obtained prior to committing to a purchase.



Note For Prospective Buyers

Upon acceptance of an offer, all buyers will need to undertake an identification check for which there will be a charge of £50+VAT per person (non-refundable). These checks are completed to meet our obligations under Anti Money Laundering Regulations (AML) and are a legal requirement.

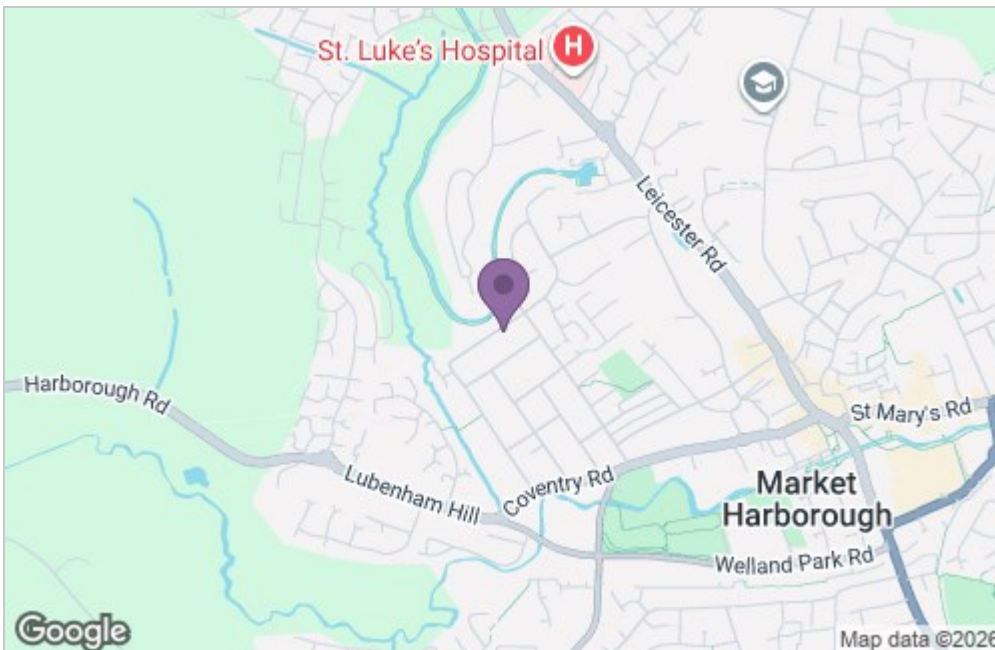


Floor Plan



Total area: approx. 213.1 sq. metres (2293.6 sq. feet)

Area Map



Energy Efficiency Graph

