



## Grosvenor Road, TW10

### £1,500,000

A fantastic opportunity to acquire the full building and freehold of this converted house on Richmond Hill. The property is currently laid out as two separate flats, but do not have any lease splits. The Lower Ground Floor accommodation comprises one double bedroom, a small kitchen, a modern bathroom with separate WC, and full length private garden.

The Raised Ground Floor consists of a two double bedroom split level flat with modern kitchen and bathroom and access to the other half of the full length garden.

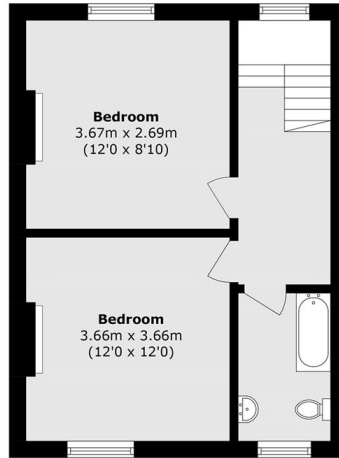
This opportunity provides a buyer two options of either retaining the properties as two separate flats, or to convert back into a single dwelling freehold house, subject to the necessary planning permission and council consent.

Grosvenor Road is located on Richmond Hill and is convenient for the amenities of Richmond town centre, with Richmond Park and Richmond Riverside close by. Richmond station offers services, to and from London, by tube or rail via the District line, South West trains and the London Overground service.

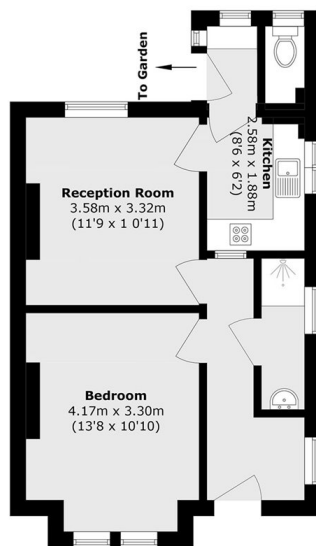
### Features

- Freehold
- Currently Two Flats
- Large Private Garden
- Richmond Hill
- Conversion Opportunity STPP
- No Onward Chain

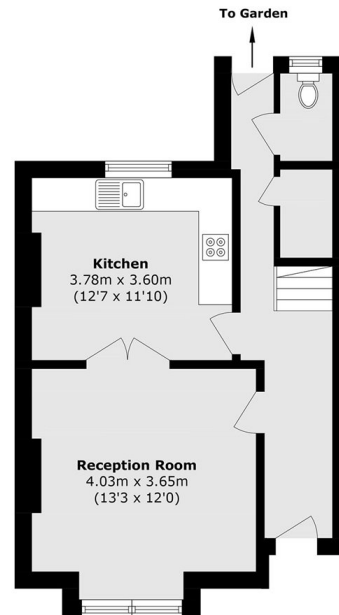
# Grosvenor Road, Richmond, TW10



**First Floor**



**Lower Ground Floor**



**Ground Floor**

Total area (approx.): 129.9 sq. m (1398.1 sq. ft)