



Lionel Road North, TW8

£650,000

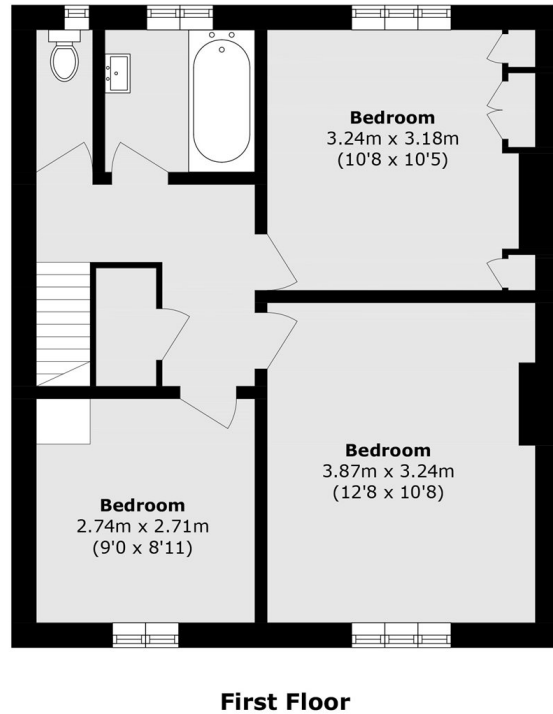
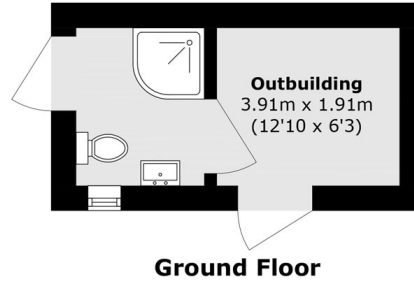
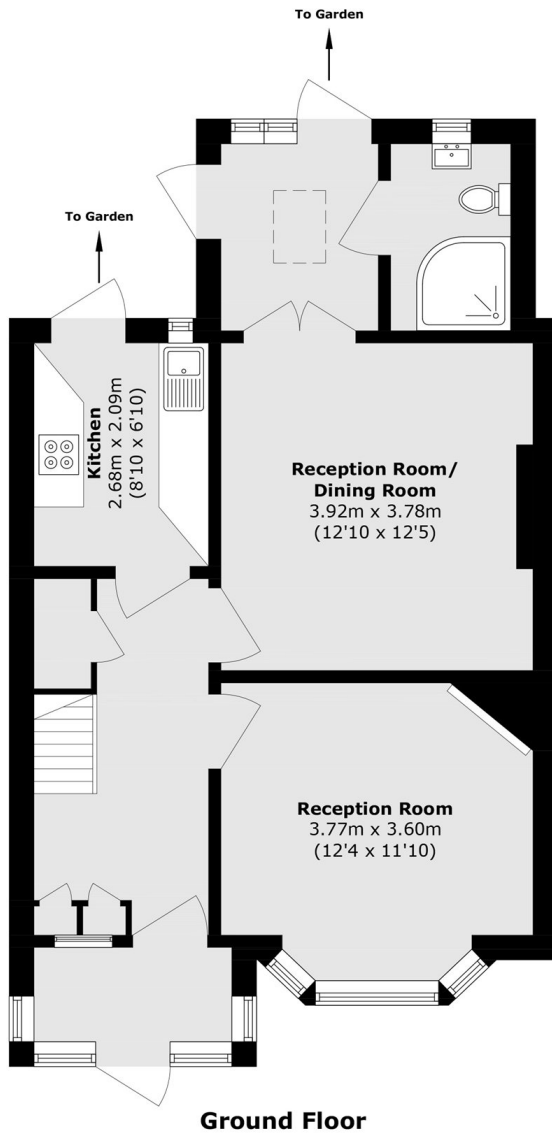
A three bedroom family home with views across Gunnersbury Park. With two reception rooms, three bathrooms, outbuilding and the potential to extend to the rear and into the loft (STPP).

Excellent transportation links to Ealing Broadway, Acton and Chiswick with easy access to Gunnersbury Park. Under a quarter of a mile to Lionel Road School.

Features

Spacious Family Home
Three Bedrooms
Two Reception Rooms
Private Garden
Extension Potential (STPP)
Park Views

Lionel Road North, Brentford, TW8



Total area (approx.): 99.0 sq. m (1065.6 sq. ft)
Outbuilding area (approx.): 7.5 sq. m (80.7 sq. ft)