



£170,000

Carter Lane, Mansfield,

Welcome to **BuckleyBrown**, where every home is carefully presented, so you can explore with clarity and confidence.

**BuckleyBrown**  
ESTATE AGENTS

This well-positioned semi-detached home in central Mansfield offers spacious and versatile accommodation with character features throughout. The property benefits from a flexible layout and well-proportioned rooms, making it suitable for a range of buyers

- Tim Brown, Valuer



## *A fantastic opportunity in a popular setting*

*Situated in the heart of Mansfield, this attractive 2/3-bedroom semi-detached home enjoys a convenient location close to a range of local shops, restaurants, amenities, and excellent transport links, making it an ideal purchase for first-time buyers, families, or investors alike.*

Boasting a beautifully landscaped rear garden that provides the perfect space to relax and unwind, the property also offers a spacious and versatile layout throughout. Combining comfort, practicality, and a desirable location, this is a home that truly has plenty to offer.



## The Finer Details

***Ideally situated in a central Mansfield location, this charming home offers generous and versatile accommodation arranged over two floors.***

Upon entering the property, you are welcomed by a bright and characterful living room positioned at the front of the home. Featuring a beautiful bay window and exposed beams, this inviting space is flooded with natural light and boasts plenty of charm. The separate dining room provides ample space for entertaining and family meals, with an attractive feature fireplace serving as a lovely focal point. The kitchen is fitted with a range of wall and base units, offering plenty of storage and workspace, and leads through to a practical utility room. A convenient ground-floor WC completes the accommodation on this level.

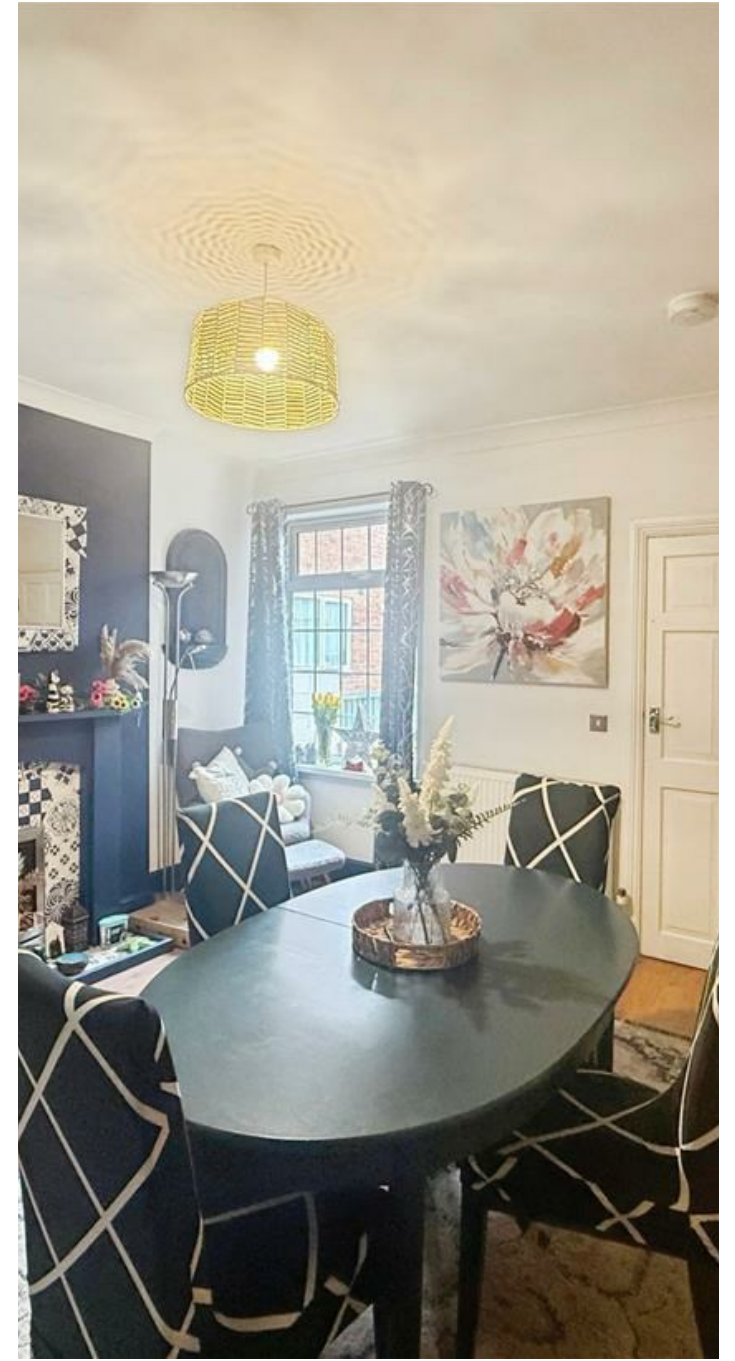
To the first floor, there are two well-proportioned bedrooms, both offering excellent potential for the new owner to personalise and make their own. In addition, there is a versatile third room that could be utilised as a dressing room, home office, nursery, or occasional bedroom, depending on individual requirements. The family bathroom is fitted with a four-piece suite comprising a bath, separate shower cubicle, wash hand basin, and WC.

Externally, the current owners have lovingly landscaped the garden to create a wonderful outdoor retreat. Thoughtfully designed and well maintained, it provides the perfect setting for relaxing, entertaining, and enjoying the warmer months.

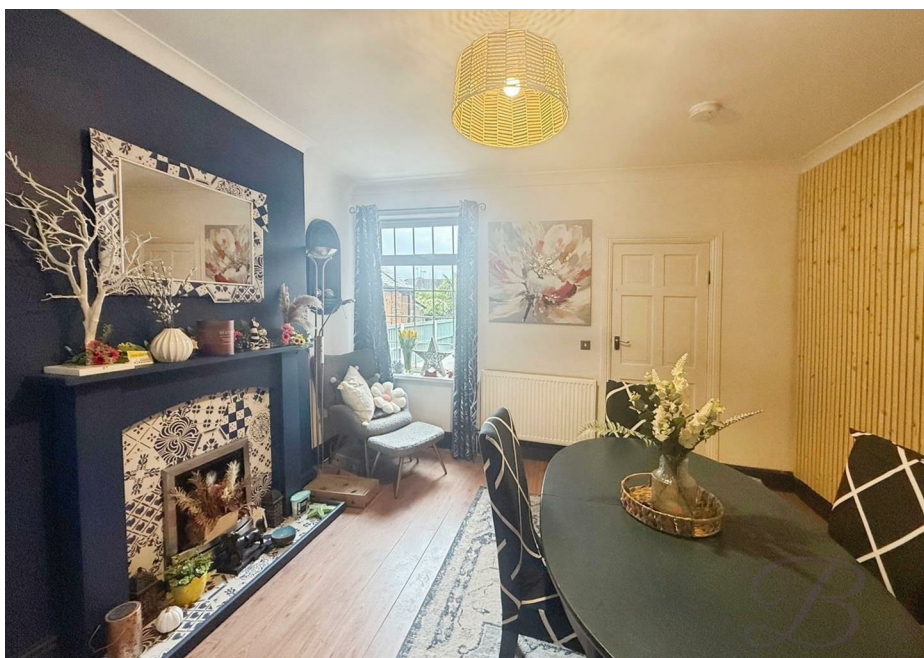




**BuckleyBrown**  
ESTATE AGENTS







## Life in

***Mansfield is a well-established and vibrant market town set in the heart of Nottinghamshire, offering a blend of rich heritage, modern amenities and excellent connectivity. As one of the largest towns in the county, it provides a lively yet accessible setting that appeals to a wide range of buyers seeking both convenience and community.***

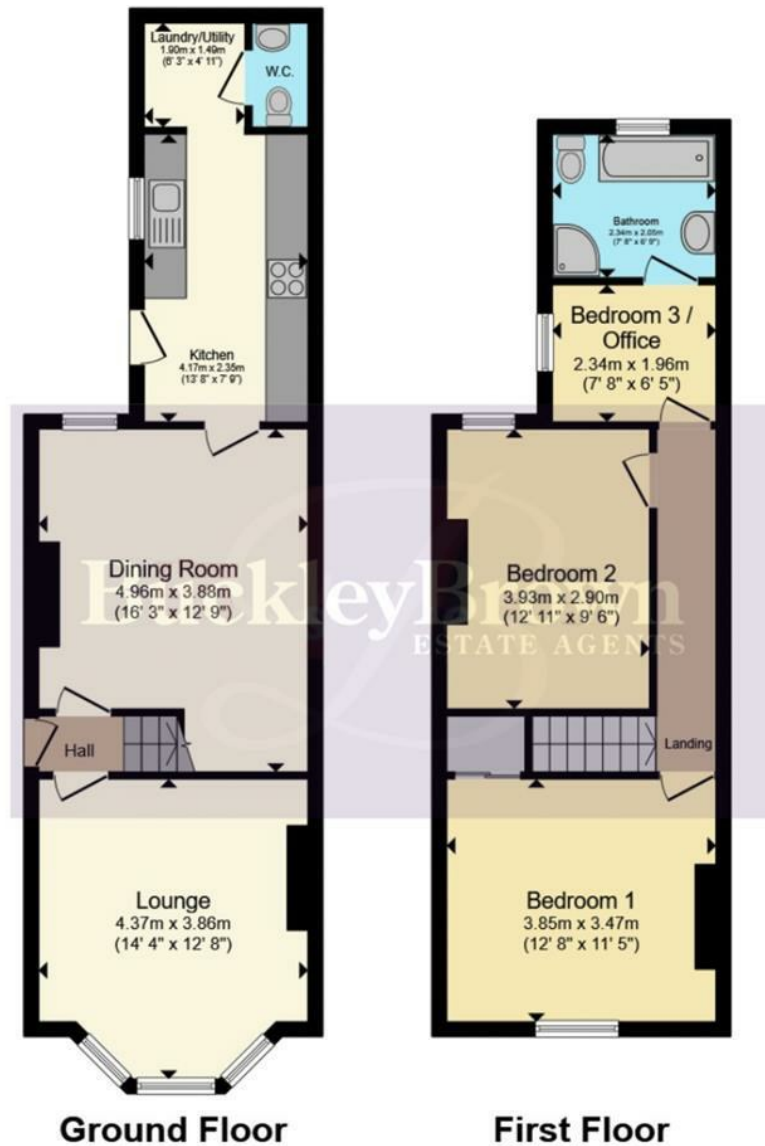
The town itself benefits from a strong sense of local identity, centred around its historic market square, which continues to host regular markets and community events. Residents enjoy access to a wide variety of shops, supermarkets, restaurants and leisure facilities, including the popular Four Seasons Shopping Centre and a range of parks and recreational spaces. This mix of amenities makes Mansfield particularly attractive to families, professionals and retirees alike.

Surrounded by attractive countryside and close to the edge of Sherwood Forest, Mansfield is well suited to outdoor enthusiasts. The area offers numerous walking and cycling routes, with nearby woodland, country parks and green spaces providing opportunities for recreation and relaxation. Local parks and nature areas further enhance the town's appeal for those who enjoy an active, outdoor lifestyle.

Despite its access to green space, Mansfield remains highly connected. The town benefits from strong transport links, including a railway station offering services to Nottingham, Worksop and beyond, while the nearby A38 and M1 provide convenient road access to Nottingham, Sheffield and Derby. This makes Mansfield an appealing choice for commuters seeking good value and accessibility.

Mansfield is particularly well suited to families, professionals and first-time buyers, as well as those looking to downsize while retaining easy access to amenities. With its combination of established infrastructure, community spirit and proximity to both countryside and major centres, Mansfield continues to be a popular and practical location within Nottinghamshire.





Total floor area 90.3 m<sup>2</sup> (972 sq.ft.) approx  
 This floorplan is for illustrative purposes only and is not drawn to scale. Measurements, floor-areas, openings and orientations are approximate. They should not be relied upon for any purpose and do not form any part of an agreement. No liability is taken for any error or mis-statement. All parties must rely on their own inspections.



These particulars are intended as a guide only and do not form part of any offer or contract. All descriptions, measurements, images and plans are provided for illustration purposes and should not be relied upon as statements of fact. Prospective purchasers should satisfy themselves as to the accuracy of the information. Buckley Brown Estate Agents accept no liability for any loss arising from reliance on these details.

© Buckley Brown Estate Agents 2026. All rights reserved.

Exceptional homes deserve  
exceptional representation.

Let's Chat.

01623 633633

[mansfield@buckleybrown.co.uk](mailto:mansfield@buckleybrown.co.uk)

[buckleybrown.co.uk](https://www.buckleybrown.co.uk)

**BuckleyBrown**  
ESTATE AGENTS