



Acres Way, Aylesbury, HP19
Aylesbury

Shared Ownership
£187,500

Bedrooms: | Bathrooms: | Receptions:
3 | 1 | 1

Council Tax Band: C

Tenure: Leasehold

Property Type: End of Terrace House

- 50% Shared Ownership Opportunity
- Open Day 02/05/2026 – 1pm to 3pm
– By Appointment Only
- Welcoming Premiums on All Offers
- Three Bedroom Home
- Spacious 18ft Living Room
- Open Plan Kitchen Area
- Downstairs WC
- Private Rear Garden with Patio Area
- Allocated Parking Space to Rear
- EG1332



EG1332

OPEN DAY – 02/05/2026 – 1PM TO 3PM – BY APPOINTMENT ONLY

A fantastic opportunity to step onto the property ladder with this well presented three bedroom home, offered on a 50% shared ownership basis in the sought after area of Aylesbury. The property is being sold with flexibility on price, with the seller welcoming premiums on any offers, giving buyers the chance to secure the home in a competitive position.

Internally, the home offers a generous and well balanced layout. The ground floor is centred around a spacious living room stretching over 18ft in length, providing plenty of space for both relaxing and entertaining. The open plan kitchen area flows well within the layout and offers practical storage and worktop space. A downstairs WC adds further convenience, particularly for guests.

Upstairs, the property continues to impress with three well proportioned bedrooms. The main bedroom is a great size, comfortably accommodating larger furniture, while bedroom two offers another strong double. Bedroom three works perfectly as a single room, nursery or home office depending on your needs. A modern family bathroom completes the first floor.

Externally, the property benefits from a private rear garden, featuring a patio area, lawn and a covered seating space, ideal for year round use. There is also a useful outbuilding and side access. To the rear of the property, there is an allocated parking space providing convenient off road parking.

This is an ideal purchase for first time buyers or those looking for a more affordable way into a larger home, with the added advantage of being able to increase your share over time subject to the housing association.

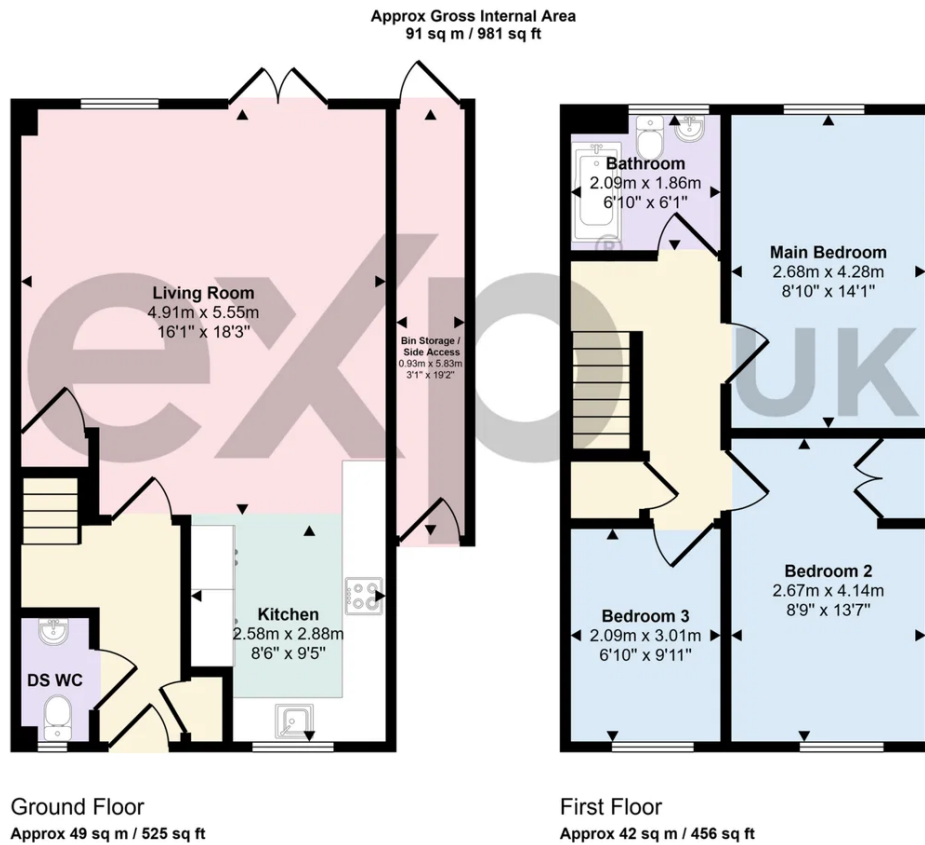
Early interest is expected, so please ensure you secure your appointment for the open day to avoid missing out.

Photo Disclaimer:

Please note that some images have been digitally enhanced and may include virtual staging, edited finishes, or improvements such as changes to furniture layout, flooring, carpets, and landscaping to demonstrate how the property could look when fully furnished or presented. These images are for illustration purposes only and do not represent items included in the sale. If you are travelling from a distance, we recommend arranging a virtual viewing or contacting us prior to your journey to ensure everything is arranged for your visit

Early viewing is highly recommended to fully appreciate the space, character, and location on offer.





This floorplan is only for illustrative purposes and is not to scale. Measurements of rooms, doors, windows, and any items are approximate and no responsibility is taken for any error, omission or mis-statement. Icons of items such as bathroom suites are representations only and may not look like the real items. Made with Made Snappy 360.



Score	Energy rating	Current	Potential
92+	A		
81-91	B		90 B
69-80	C	77 C	
55-68	D		
39-54	E		
21-38	F		
1-20	G		

Ethan Gaulter
Local Estate Agent
01908 464 950
Ethan.Gaulter@exp.uk.com
<https://ethangaulter.exp.uk.com>

ETHAN GAULTER

