



Lordship Lane, SE22 | Guide Price £380,000

02087028222

eastdulwich@pedderproperty.com

pedder
We live local



In General

- Two double bedrooms
- Purpose-built apartment
- Ground floor
- Large, communal gardens
- Good condition throughout
- Share of Freehold

In Detail

Guide price £380,000 - £400,000 CHAIN FREE – Two double bedroom purpose-built apartment on the ground floor of this 1930's-built apartment block between East Dulwich and Dulwich Village.

Boasting over 620 Sq Ft of internal space – the property is currently rented and offered to the market chain free. There are two comfortable double bedrooms including the 15-ft principal bedroom as well as a modern bathroom. There is a 15x10 ft reception room and a separate eat-in kitchen with a patio door leading out directly onto the large communal garden at the rear.

Art-deco-inspired Norman Court is located at the south end of Lordship Lane offering easy access into the excellent parks and green spaces of Dulwich Park, Sydenham Woods and Horniman Museum Gardens. There are strong transport links into The City and West End from Forest Hill station (0.9 miles) and East Dulwich station (1.3 miles) as well as bus/cycle routes through the neighbouring Dulwich Village, Peckham Rye and Camberwell. There are an array of independent shops, coffee shops, bars and restaurants nearby on Lordship Lane, North Cross Road and London Road.

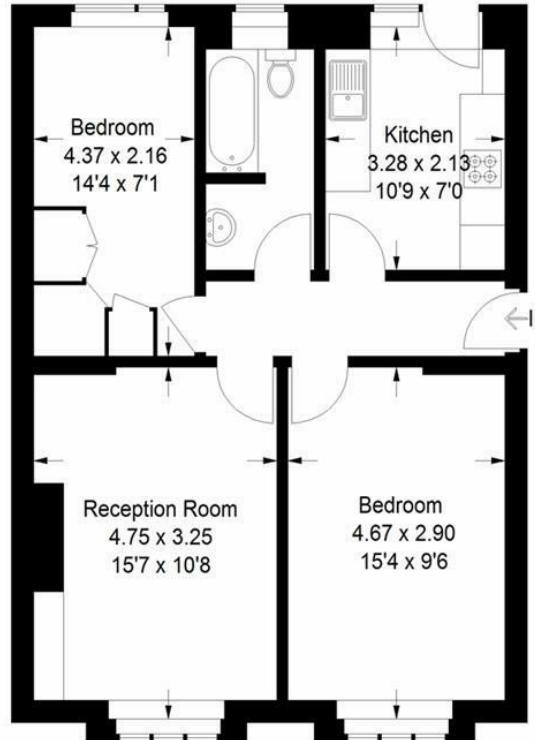
EPC: C | Council tax band: B | Lease: 156 years remaining | SC: £2,322.75 pa | GR: Nil | BI: incl. in SC



Floorplan

Norman Ct, SE22

Approximate Gross Internal Area
57.8 sq m / 622 sq ft



Ground Floor

Copyright www.pedderproperty.com © 2024

These plans are for representation purposes only as defined by RICS - Code of Measuring Practice. Not drawn to Scale. Windows and door openings are approximate. Please check all dimensions, shapes and compass bearings before making any decisions reliant upon them.

Pedder Property Ltd trading as Pedder for themselves and for the vendor/landlord of this property whose agents they are, give notice that (1) these particulars do not constitute any part of an offer or contract, (2) all statements contained within these particulars are made without responsibility on the part of Pedder or the vendor/landlord, (3) whilst made in good faith, none of the statements contained within these particulars are to be relied upon as a statement of representation or fact, (4) any intending purchaser/tenant must satisfy him/herself by inspection or otherwise as to the correctness of each of the statements contained within these particulars, (5) the vendor/landlord does not make or give either Pedder or any person in their employment any authority to make or give representation or warranty whatsoever in relation to this property.

Energy Efficiency Rating		Current	Potential
Very energy efficient - lower running costs			
102 plus) A			
81-101) B			
69-80) C		73	78
55-68) D			
39-54) E			
21-38) F			
1-20) G			
Not energy efficient - higher running costs			
England & Wales	EU Directive 2002/91/EC		