

HJC

HIGHER VALUES



Winters Road

Thames Ditton, KT7 0XW

Guide Price £565,000

A two-bedroom character cottage, ideally located within close proximity to both Thames Ditton and Surbiton stations, offering excellent transport links and everyday convenience.

The property features comfortable living space with natural wooden floorboards and a feature fireplace. The kitchen flows into a dedicated dining area, with access to a private courtyard garden, perfect for outdoor dining or relaxing. Upstairs, the home offers two double bedrooms and a family bathroom. Further benefits a bonus loft room, ideal for use as a home office. Offered to the market chain-free.

VIEWINGS TO COMMENCE 2 MARCH

- Terraced character cottage
- Kitchen/Dining room
- Private courtyard garden
- Walking distance to local amenities
- 2 double bedrooms
- Bonus Loft Room
- Close proximity to transport links
- Sold chain free

Floor Plan

Winters Road

Approximate Gross Internal Area = 85.6 sq m / 921 sq ft

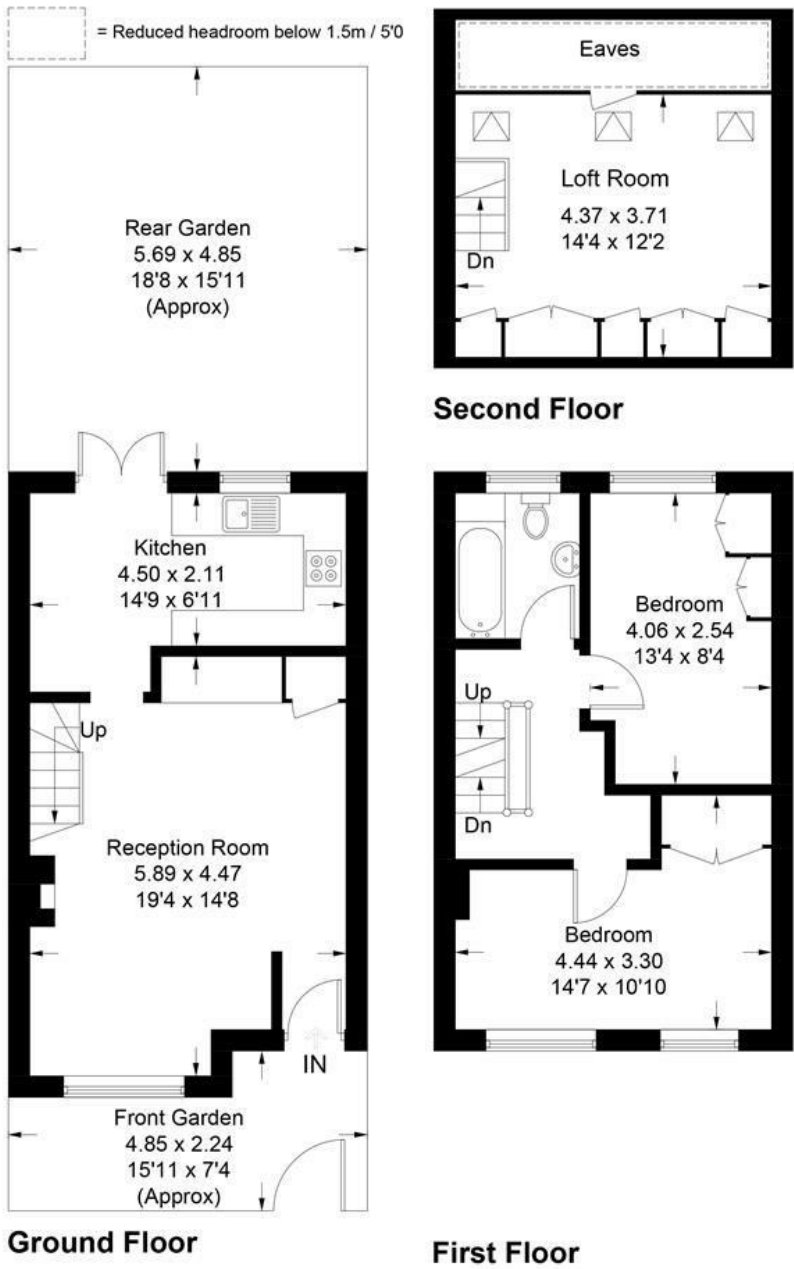
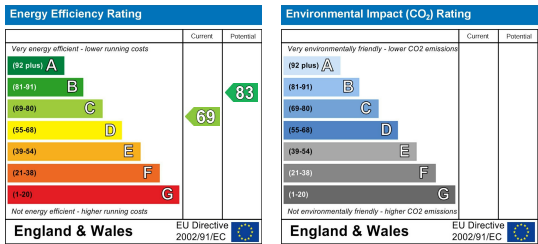


Illustration for identification purposes only, measurements are approximate, not to scale. Fourlabs.co © (ID1270158)

Energy Efficiency Graph



These particulars, whilst believed to be accurate are set out as a general outline only for guidance and do not constitute any part of an offer or contract. Intending purchasers should not rely on them as statements of representation of fact, but must satisfy themselves by inspection or otherwise as to their accuracy. No person in this firms employment has the authority to make or give any representation or warranty in respect of the property.