

Great Russell Street, WC1B

M^{OV}ELI





Great Russell Street, WC1B

Cool and bright Bloomsbury one-bed moments from the British Museum & top tube links. Gas & water included, open-plan living, great storage and excellent Central London value.

- Available 13th of July 2026
- Rent Includes Gas and Water Rates
- Open-plan living space with fitted kitchen appliances
- Prime Bloomsbury location moments from the British Museum
- Excellent transport links via Tottenham Court Road, Holborn & Russell Square
- Council Tax Band D Camden £2,208
- Furnished
- Kitchen includes Fridge Freezer, Washing Machine and Cooker



Bright and beautifully positioned in the heart of Bloomsbury, this cool second-floor one-bedroom apartment offers the perfect blend of London charm and city convenience.

The apartment features a bright east-facing reception with an open-plan kitchen and living area, creating a welcoming space to relax, work, or entertain. The kitchen comes fully equipped with a washer-dryer and fridge-freezer, while the spacious bedroom benefits from built-in wardrobes and excellent storage. Finished with contemporary laminate wood flooring throughout, the property has a clean and comfortable feel. While the apartment is not ultra-modern, it has been priced reasonably for the area, offering excellent value in one of Central London's most desirable locations.

Gas and water bills are included in the rent, making city living even more convenient.

Location-wise, it doesn't get much better. Situated just moments from the British Museum and within easy walking distance of Tottenham Court Road, Goodge Street, Holborn, and Russell Square stations, you are perfectly placed to enjoy everything Central London has to offer. From independent cafés and restaurants to world-class universities, theatres, galleries, and the buzz of the West End, Bloomsbury offers a lifestyle that is both cultural and connected.

Ideal for professionals, postgraduates, or anyone wanting to experience central London living at ►



► its best.





LOCATION

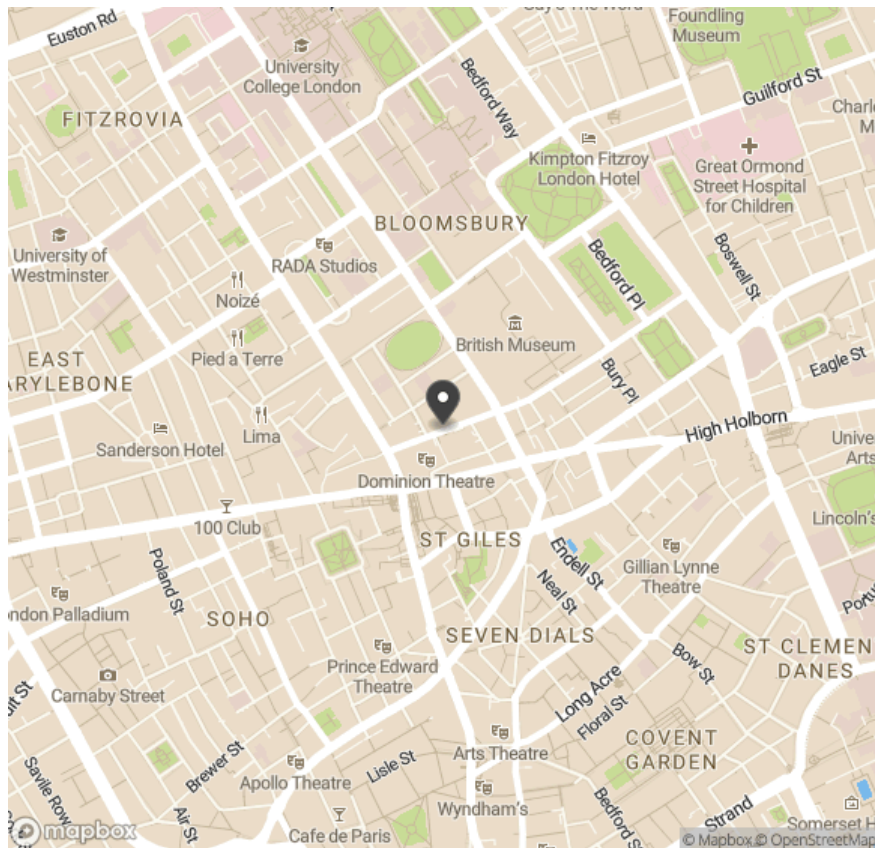


Property location

ENERGY PERFORMANCE CERTIFICATE (EPC)

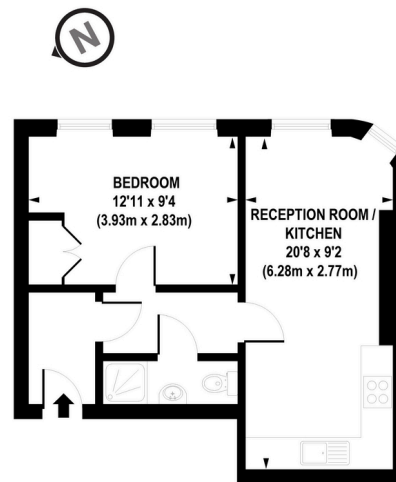
Current: 69

Potential: 75



FLOOR PLAN

416 sq ft (38 sq m)



SECOND FLOOR

APPROX. GROSS INTERNAL FLOOR AREA 416 sq. ft / 38.69 sq. m

Floorplan is for illustrative purposes only and is not to scale.
Every attempt has been made to ensure the accuracy of the floorplan shown, however all measurements, fixtures, fittings and data shown are an approximate interpretation for illustrative purposes only.
Liability for errors, omissions or mis-statement through negligence or otherwise is hereby excluded.

Important notice: Movelli give notice that: all text, photographs and plans on these brochures are for guidance only and are not necessarily comprehensive; any areas, measurements or distances given are approximate; these details do not constitute part of an offer or contract and must not be relied upon as statements or representations of fact; it should not be assumed that the property has all the necessary planning permissions and building regulations approvals; we are not authorised to give any representations or warranties in relation to this property whatsoever; potential purchasers must satisfy themselves as to the correctness of all details by inspection or otherwise. Alpinum Limited T/A Movelli, Brewery Farm, Old Coach Road, Axbridge, Somerset BS26 2EH Tel: 020 3150 0733 Email: hello@movelli.com



Kurt Anthony Gonzales

For viewings, further information or a free property valuation contact:

☎ 07539 828 131 | 02034 055 123

✉ kurt@moveli.co.uk