



Compass House

5 Park Street, Chelsea Creek, SW6 2FB

£625 Per Week



1



1

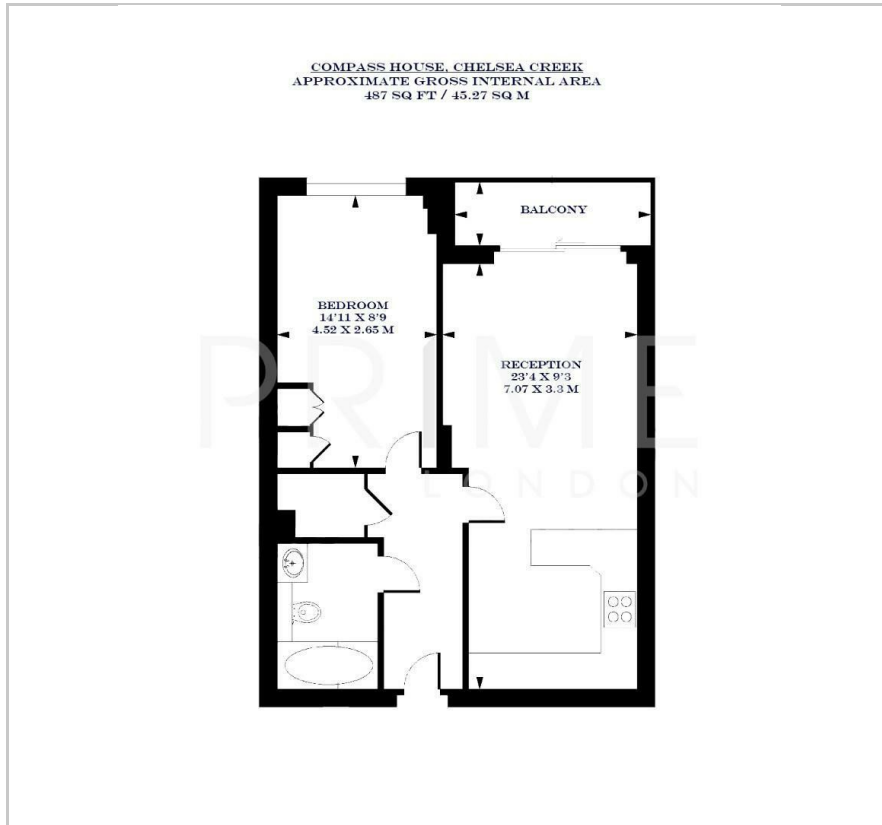


1

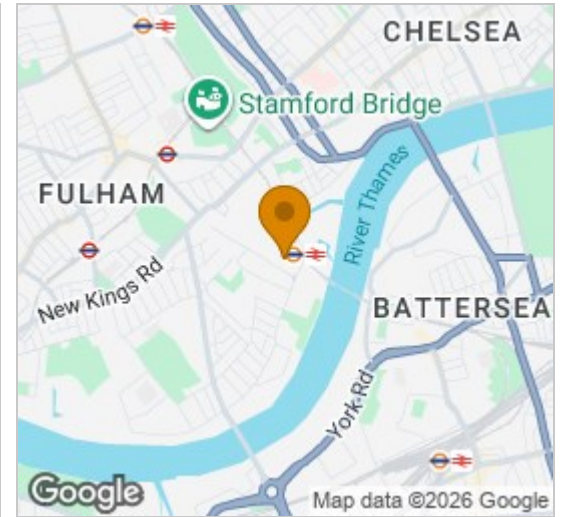


B

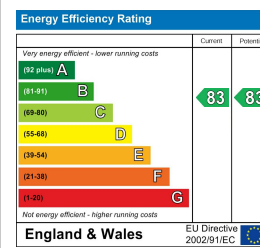
Floor Plan



Area Map



Energy Efficiency Graph



Viewing

By appointment. Contact us on 0207 052 1075 if you wish to arrange a viewing appointment for this property, or require further information.

- One bedroom apartment
- Fully furnished
- Residents' gym, spa, and swimming pool
- 487 sq ft (45.27 sqm)
- Private balcony
- 24 hour concierge

This beautifully presented one bedroom apartment, located in the popular Chelsea Creek development, is available for lease through Prime London.

Spanning 487 sqft (45.27 sqm), the apartment features an open-plan reception area generous in size and allows for a seamless flow into the balcony. The kitchen is fitted with modern appliances and stylish cabinetry.

The double bedroom is well-sized and benefits from built-in wardrobes, providing ample storage. The luxurious bathroom, with its sleek finishes, completes the apartment.

Residents of Chelsea Creek benefit from 24 hour concierge services, a state-of-the-art spa, swimming pool, gym, and treatment rooms.

The apartment is just a short stroll from the fashionable King's Road and the lively Chelsea Harbour. Imperial Wharf Overground station is a just stone's throw away.



These particulars, whilst believed to be accurate are set out as a general outline only for guidance and do not constitute any part of an offer or contract. Intending purchasers should not rely on them as statements of representation of fact, but must satisfy themselves by inspection or otherwise as to their accuracy. No person in this firm's employment has the authority to make or give any representation or warranty in respect of the property.