



# Shipbuilding Way, London E13

£525,000 Leasehold









## Description

Situated within the highly sought-after Upton Gardens development in the heart of East London's transformation, this exceptional split-level apartment represents contemporary living at its finest. The development embodies the area's regeneration story, combining architectural excellence with thoughtfully designed community spaces that foster a genuine sense of belonging.

This remarkable two-bedroom residence spans three floors of sophisticated living space, beginning with an intelligently designed entrance level featuring a separate kitchen and dining area equipped with a state-of-the-art integrated kitchen. The ground floor also incorporates a guest cloakroom, valuable storage solutions, and a distinct reception room that provides versatile living options. Ascending to the first floor reveals two generously proportioned double bedrooms alongside a stylishly appointed bathroom suite and additional storage cupboards that enhance the apartment's practical appeal.

The crown jewel of this property lies on the uppermost floor, where two private south-facing roof terraces deliver breath taking panoramic views across London's evolving skyline.

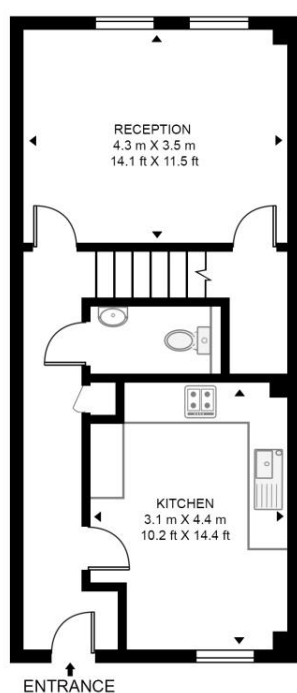
- Two bedrooms
- Split-level apartment
- Bathroom + Guest WC
- Two large private roof terraces
- 24hr concierge service
- Residents' gym
- Landscaped communal gardens & play areas
- Approx. 1050 sq. ft (97.6 sq. m)
- EPC Rating B

# Floorplan

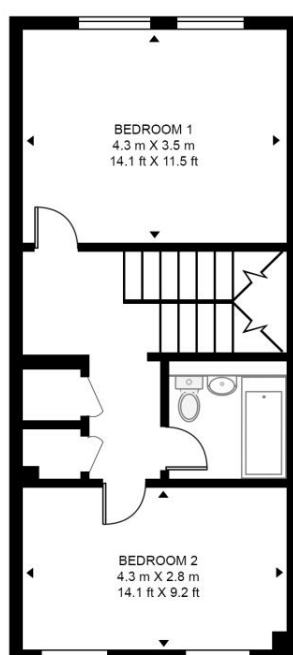
1,050 sq ft | 98 sq m

## CANTWELL HOUSE, SHIPBUILDING WAY

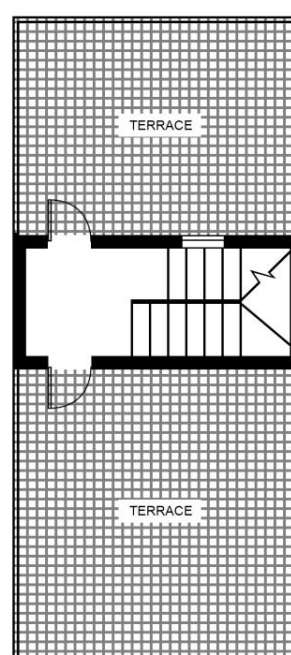
APPROXIMATE GROSS INTERNAL FLOOR AREA 1050 SQ.FT (97.6 SQ.M)



THIRD FLOOR



FOURTH FLOOR



FIFTH FLOOR



This floor plan has been defined by the RICS Code of Measurement. This floor plan and all others are for approximate representative purposes only and upon usage is agreed to as such by the client.  
WWW: [hdvirtualart.com](http://hdvirtualart.com) | TEL: 0203.974.1567 | EMAIL: [info@hdvirtualart.com](mailto:info@hdvirtualart.com)

Stratford  
5 Station Street,  
London E15 1DA  
+4420 3147 1500  
[Lettingsstratford@eu.jll.com](mailto:Lettingsstratford@eu.jll.com)

*Urban living, your way.*

[jll.co.uk/residential](http://jll.co.uk/residential)

© 2019 Jones Lang LaSalle IP, Inc. All rights reserved. All information contained herein is from sources deemed reliable; however, no representation or warranty is made to the accuracy thereof.

