



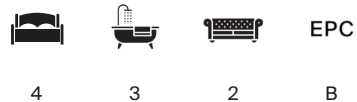
TEMPLE FORTUNE LANE

Hampstead Garden Suburb, NW11



A FOUR BEDROOM HOUSE ON TEMPLE FORTUNE LANE, NW11

Discover the charm of city living in this beautifully presented early 20th century terraced house, whose quaint exterior conceals a strikingly modern aesthetic within.



Local Authority: London Borough of Barnet

Council Tax band: F

Tenure: Freehold

Asking Price: £1,575,000



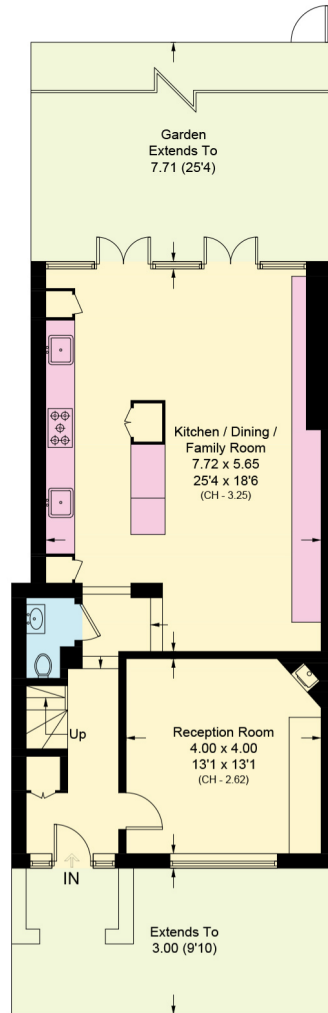
EXTENDING TO APPROXIMATELY 1,801 SQ FT

the property provides generous accommodation across four spacious bedrooms, three contemporary bathrooms including two en-suites and a separate w/c, making it perfectly suited to families seeking a genuinely turnkey home. The home boasts two well-appointed reception rooms, offering versatile spaces for both relaxation and entertaining. An expansive double-height open-plan reception greets you upon entry and with a south-westerly aspect the principal rooms are flooded with natural light, creating a bright and welcoming atmosphere. The architecturally designed extension is a true statement feature, enhanced by exposed brickwork that brings a touch of industrial chic to the space. The kitchen is well equipped with a full-size American-style fridge, beautiful stone work surfaces, a double oven and a double sink, all contributing to the ease and convenience of modern living.






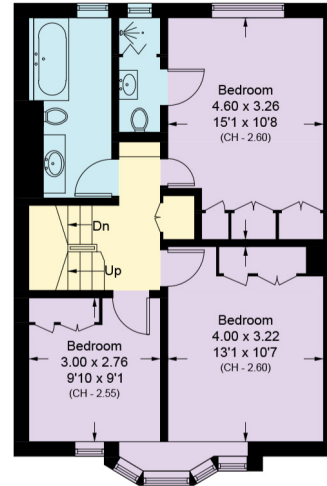




Ground Floor

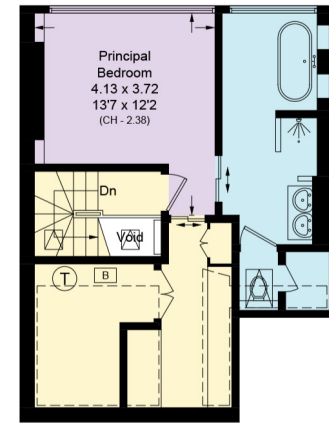
Approximate Area = 69.4 sq m / 747 sq ft
Including Limited Use Area (0.3 sq m / 3 sq ft)

 = Reduce head height below 1.5m



First Floor

Approximate Area = 54.3 sq m / 584 sq ft
Including Limited Use Area (1.7 sq m / 18 sq ft)



Second Floor

Approximate Area = 43.7 sq m / 470 sq ft
Including Limited Use Area (9.1 sq m / 98 sq ft)

Approximate Gross Internal Area = 167 sq m / 1,801 sq ft

This plan is for layout guidance only. Not drawn to scale unless stated. Windows and door openings are approximate. Whilst every care is taken in the preparation of this plan, please check all dimensions, shapes and compass bearings before making any decisions reliant upon them. (ID767266)

We would be delighted
to tell you more.

Nathan White
020 3833 9813
nathan.white@knightfrank.com

Knight Frank Hampstead
58-62 Heath Street, London
NW3 1EN

[knightfrank.co.uk](https://www.knightfrank.co.uk)

Your partners in property

1. Particulars: These particulars are not an offer or contract, nor part of one. You should not rely on statements given by Knight Frank in the particulars, by word of mouth or in writing ("information") as being factually accurate about the property, its condition or its value. Neither Knight Frank nor any joint agent has any authority to make any representations about the property, and accordingly any information given is entirely without responsibility on the part of Knight Frank. 2. Material Information: Please note that the material information is provided to Knight Frank by third parties and is provided here as a guide only. While Knight Frank has taken steps to verify this information, we advise you to confirm the details of any such material information prior to any offer being submitted. If we are informed of changes to this information by the seller or another third party, we will use reasonable endeavours to update this as soon as practical. 3. Photos, Videos etc: The photographs, property videos and virtual viewings etc. show only certain parts of the property as they appeared at the time they were taken. Areas, measurements and distances given are approximate only. 4. Regulations etc: Any reference to alterations to, or use of, any part of the property does not mean that any necessary planning, building regulations or other consent has been obtained. A buyer must find out by inspection or in other ways that these matters have been properly dealt with and that all information is correct. 5. Fixtures and fittings: A list of the fitted carpets, curtains, light fittings and other items fixed to the property which are included in the sale (or may be available by separate negotiation) will be provided by the Seller's Solicitors. 6. VAT: The VAT position relating to the property may change without notice. 7. To find out how we process Personal Data, please refer to our Group Privacy Statement and other notices at <https://www.knightfrank.com/legals/privacy-statement>.

Particulars dated May 2026. Photographs and videos dated May 2026. All information is correct at the time of going to print. Knight Frank is the trading name of Knight Frank LLP. Knight Frank LLP is a limited liability partnership registered in England and Wales with registered number OC305934. Our registered office is at 55 Baker Street, London W1U 8AN. We use the term 'partner' to refer to a member of Knight Frank LLP, or an employee or consultant. A list of members names of Knight Frank LLP may be inspected at our registered office. If you do not want us to contact you further about our services then please contact us by either calling 020 3544 0692, email to marketing.help@knightfrank.com or post to our UK Residential Marketing Manager at our registered office (above) providing your name and address.