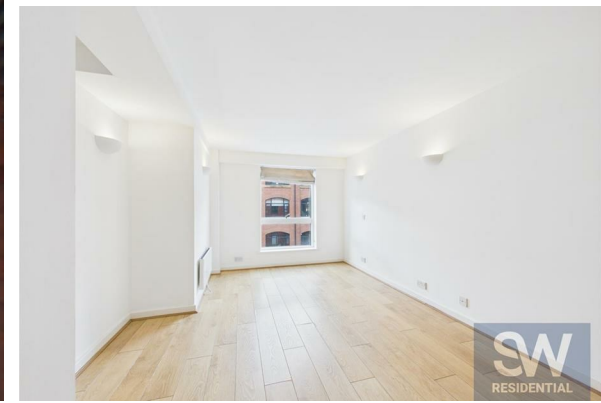




TO LET



21 The Quays Concordia Street, Leeds, West Yorkshire, LS1 4ES

£1,325 PCM

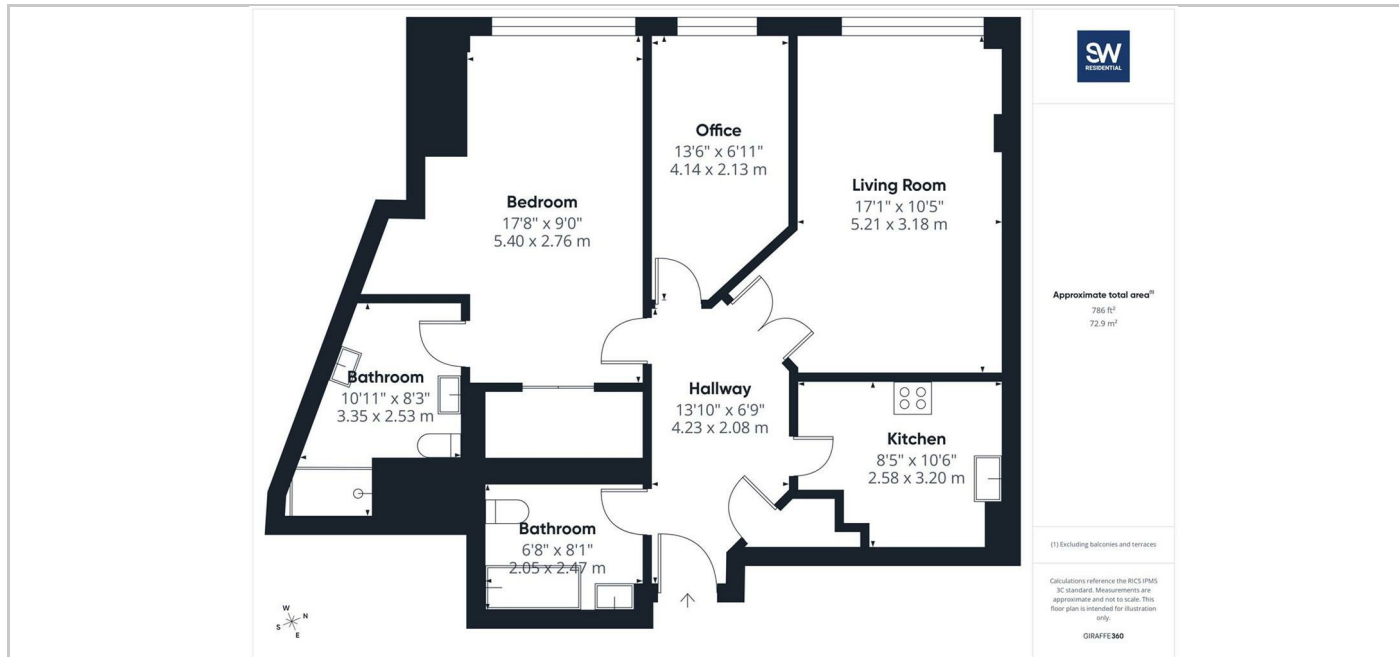
SW
RESIDENTIAL

- Two Double Bedrooms
- Two Bathrooms
- Unfurnished
- Walk-In Wardrobe
- Excellent Central Location
- Separate Modern Kitchen
- Available beginning of June

THE PROPERTY

A fantastic opportunity to rent this spacious two-bedroom apartment located on the third floor at the sought after development of The Quays.

The property comprises two double bedrooms with en-suite to the master, house bathroom, a living area with access to the balcony offering city facing views, and a separate kitchen with fully integrated appliances. Situated on Concordia Street, the apartment benefits from an allocated parking space which can be provided at an extra cost and is conveniently within a stones throw of the train station and a wide variety of shops, cafes, bars and restaurants. Available now.



SITUATION

Directions

6th Floor Central Square, 29 Wellington Street, West Yorkshire, LS1 4DL
Tel: 0113 221 6000 Email: residential@sw.co.uk