

# Castles



ASKING PRICE

**£479,995**

**Westmoor Gardens**

Enfield, EN3 7LQ Freehold

## PROPERTY SUMMARY

This 1930s three-bedroom terraced house offers well-proportioned accommodation and retains the practical layout typical of homes from this period. The property has been recently redecorated, providing a clean and well-presented home that is ready to move into, while still allowing scope for future personalisation.

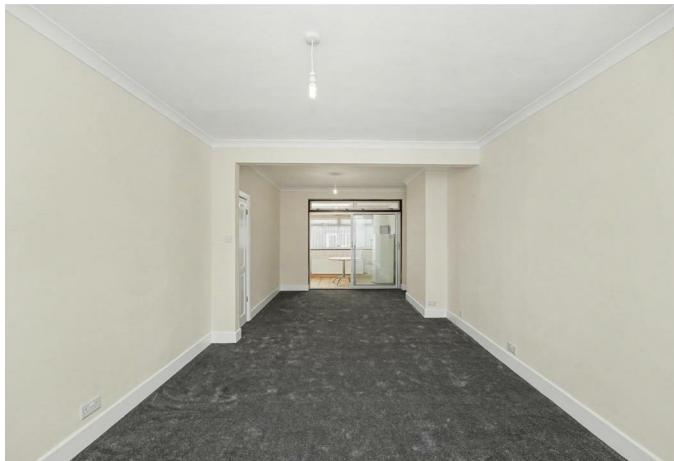
The ground floor comprises a through lounge, offering a generous and flexible living space ideal for both relaxing and dining. To the rear, there is an extended kitchen diner, providing additional space for family meals and everyday use.

Upstairs, the property offers three bedrooms along with a first-floor family bathroom. Externally, the property benefits from off-street parking to the front, along with a garage to the rear, offering useful storage or additional parking - a valuable feature for a property of this era.

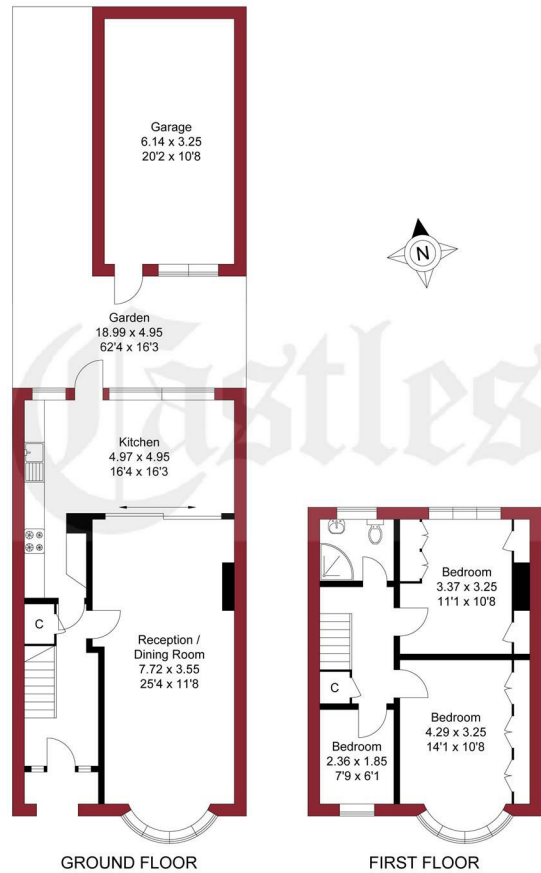
Overall, this is a solid and characterful home that has been well maintained and presents an excellent opportunity for buyers looking for a traditional property with generous space and further potential.

The property is offered on a Chain Free basis.



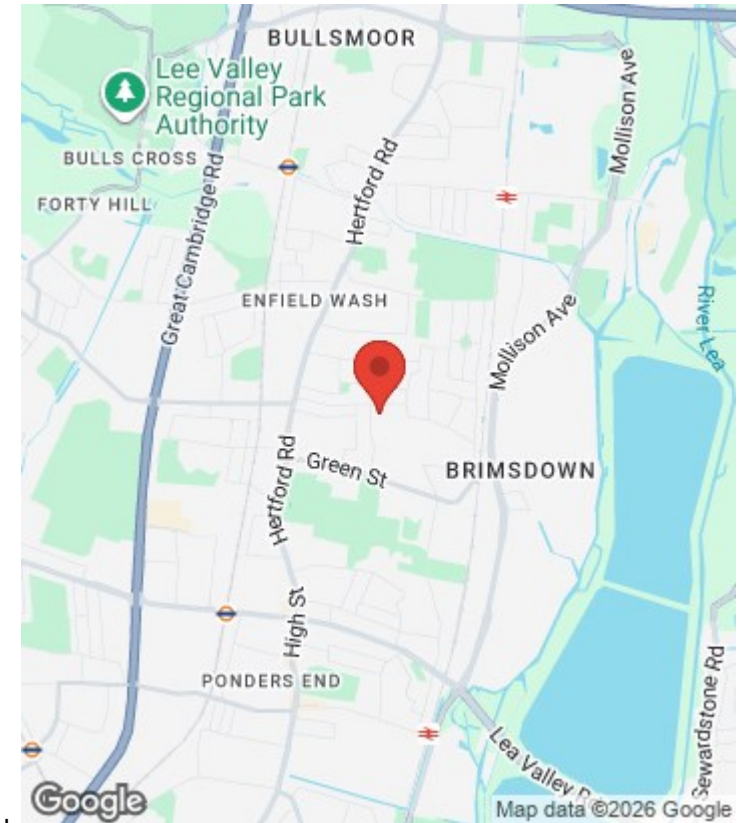


APPROXIMATE GROSS INTERNAL AREA  
 92.47 sqm / 995.33 sqft (Excluding Garage)  
 112.43 sqm / 1210.18 sqft (Including Garage)



THIS PLAN IS FOR ILLUSTRATION ONLY AND MAY NOT BE REPRESENTATIVE OF THE PROPERTY

For a guide to the area please scan this code for more information



House

Freehold

**Council:** Enfield

**Council Tax Band:** D

Agents Note: Whilst every care has been taken to prepare these particulars, they are for guidance purposes only. All measurements are approximate and are for general guidance purposes only and whilst every care has been taken to ensure their accuracy, they should not be relied upon and potential buyers/tenants are advised to recheck the measurements



**OFFICE ADDRESS**

243 - 245 Hertford Road  
 Enfield  
 London  
 EN3 5JJ

**OFFICE DETAILS**

0208 804 8000  
 enfield@castles.london  
 https://www.castles.london

