



Green Street, TW16

£650,000

Thames Lodge is a beautiful three bedroom period property filled with original features and charm. This character property in the heart of the village is being sold with the added bonus of no forward chain.

The property is located on Green Street within the conservation area in Lower Sunbury. The River Thames is approximately 100m away with easy access to launch a paddleboard or kayak. Everything Sunbury Village has to offer is close by including Sunbury Park and the famous 'Walled Garden'.

Features

- Period Property
- Three Bedrooms
- Two Reception Rooms
- Downstairs W.C.
- Courtyard Garden
- Close To The River



Green Street, TW16

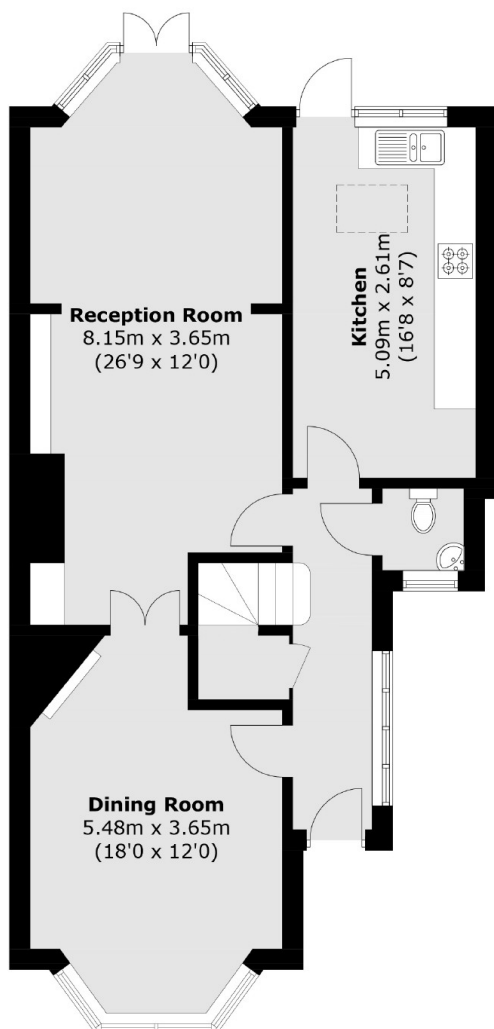
The ground floor comprises of a welcoming entrance hallway, a spacious front reception room with bay window and feature fireplace, a second double reception room with French doors opening out on to the rear garden and a generous eat in kitchen.

On the first floor there are three double bedrooms and a family bathroom. To the rear of the property there is a private courtyard garden with kayak storage.

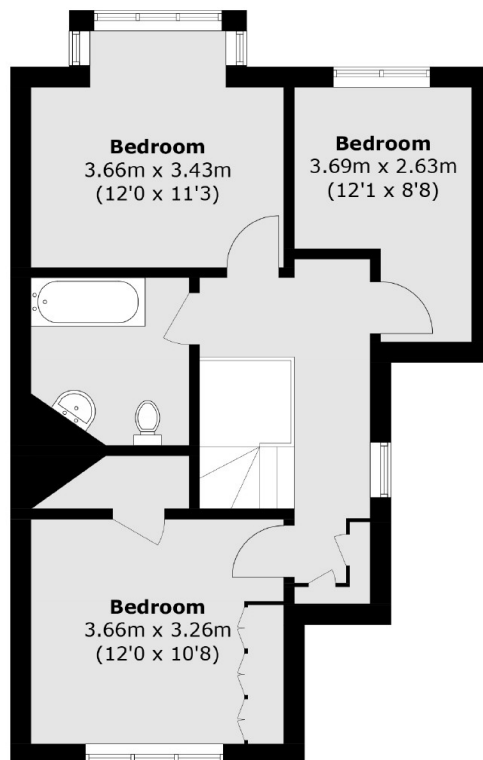
Character properties like this do not come on to the market very often in Lower Sunbury. Give us a call straight away to arrange a viewing to avoid missing out.



Green Street, Sunbury-On-Thames, TW16



Ground Floor



First Floor

Total area (approx.): 121.6 sq. m (1,308.9 sq. ft)