



BRITISH
PROPERTY
AWARDS

2018



GOLD WINNER

ESTATE AGENT
IN STAMFORD

nest
ESTATES

St. Marys Avenue, Wittering

Peterborough, PE8 6EA

£180,000

SUMMARY

- No Onward Chain
- Off Road Parking
- Enclosed Rear Garden
- Kitchen
- Living / Dining Space
- Family Bathroom
- Two Double Bedrooms End Of Terrace Home
-





*** NO ONWARD CHAIN ***

Two-Bedroom End-of-Terrace Home with Open Front Aspect .

This spacious and inviting two-bedroom end-of-terrace property, enjoying an open outlook to the front, adding a sense of space and privacy to this well-located home. Inside, the property features a bright and airy living/dining room, a well-appointed kitchen, and a convenient internal store. Upstairs, you'll find two generously sized double bedrooms and a family bathroom.



Outside, benefit from off-road parking, a secure external storage area, and an enclosed rear garden—ideal for relaxing or entertaining. Perfect for first-time buyers, small families, or investors, this delightful home is ready to move into and enjoy.

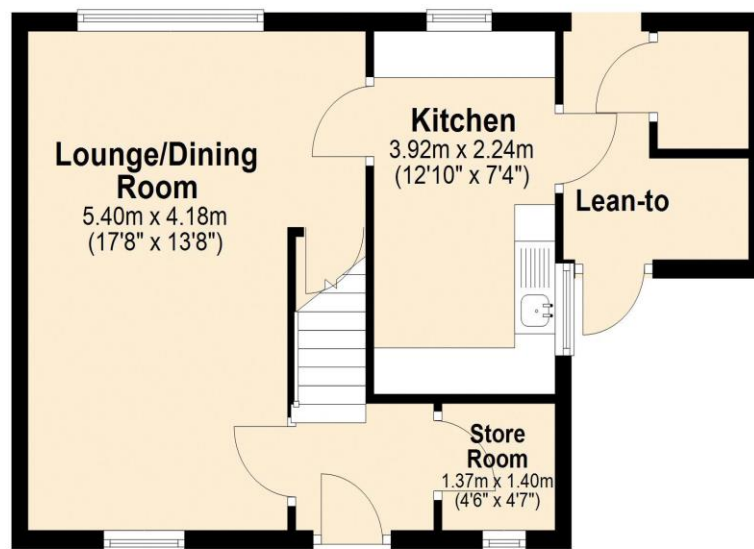


DISCLAIMER

Money Laundering Regulation: People who intend to purchase will be asked to show us documents to prove their identity. This will allow us to agree the sale and move forward with your purchase as quickly as possible. 2. We do our best to make sure our sales particulars are as accurate and reliable as we can. However, they are a general guide to the property and if something is particularly important to you, we will be happy to check information for you. As regards measurements, the approximate room sizes are intended as a general guide. You must verify dimensions of rooms yourself before ordering any carpets or furniture. 3. As regards services, we have not tested the services or any equipment including appliances in this property. We advise prospective buyers to carry out their own survey, service report before making their final offer to purchase. 4. This sales information has been issued in good faith. However, it does not constitute representation of fact or form part of any offer or contract. The information referred to in these particulars should be independently verified by any prospective buyer or tenant. Neither Nest Estates nor any of its employees has the authority to make or give any representation or warranty whatever in relation to this property.

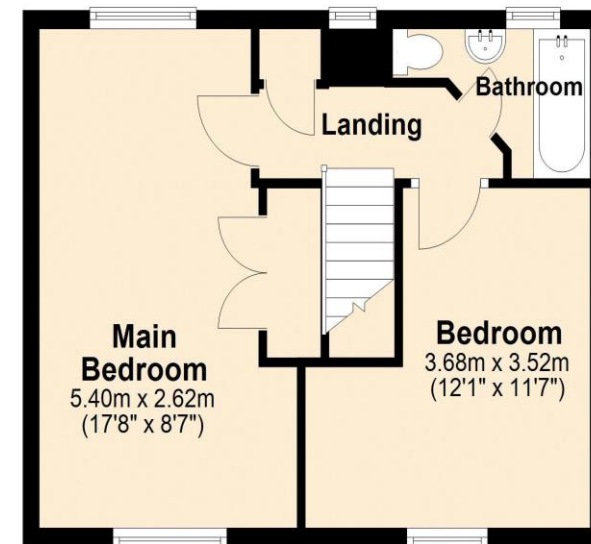
Ground Floor

Approx. 41.1 sq. metres (442.3 sq. feet)



First Floor

Approx. 36.9 sq. metres (396.7 sq. feet)



Total area: approx. 77.9 sq. metres (839.0 sq. feet)

