



Drayton Park, London, N5 1NT

£2,700 pcm

arley
property

Bedrooms: 1 | Bathrooms: 1 | Receptions: 1

Date First Available: 05/04/2026

Deposit: £3,115

- Finished to an immaculate specification
- Private garden
- Dynamic out-building that is currently a home office
- Reception room, with open-plan kitchen
- Double bedroom with in-built storage
- Private entrance
- Excellent transport links
- Available from early April, on a furnished basis.

Within a close proximity to Highbury Fields, the amenities Islington and Upper Street have to offer along with Drayton Park Station, ensuring a short commute into the City, is this delightful one bedroom garden flat, set within a converted period house.

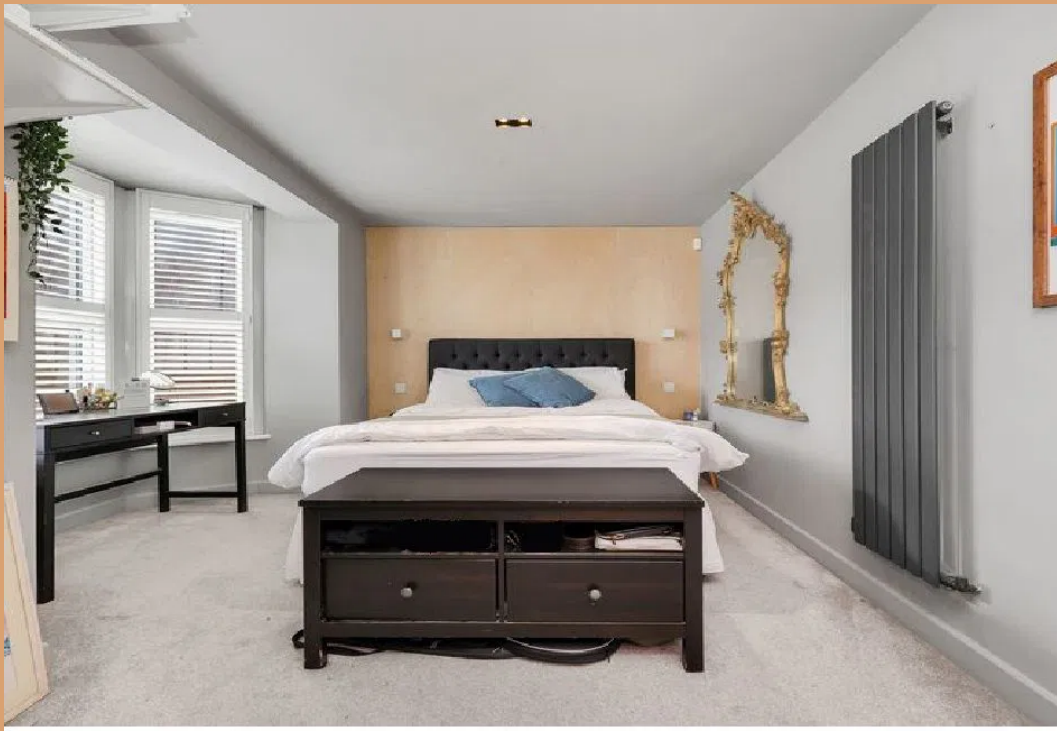
This thoughtfully curated property has been lovingly renovated and maintained by the current owner in a manner that blends the original period charm, with its own contemporary design.

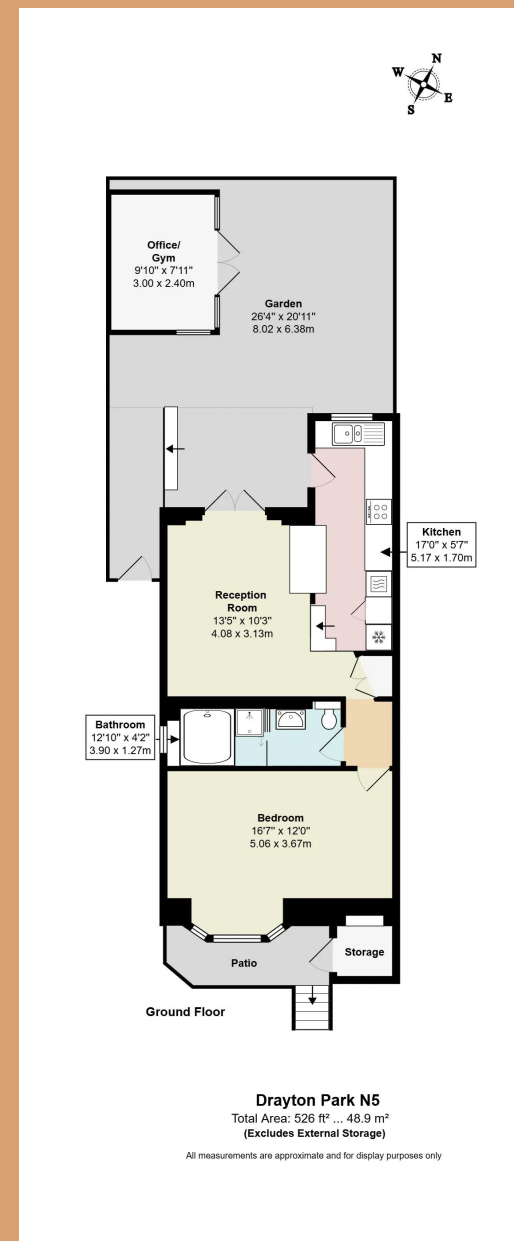
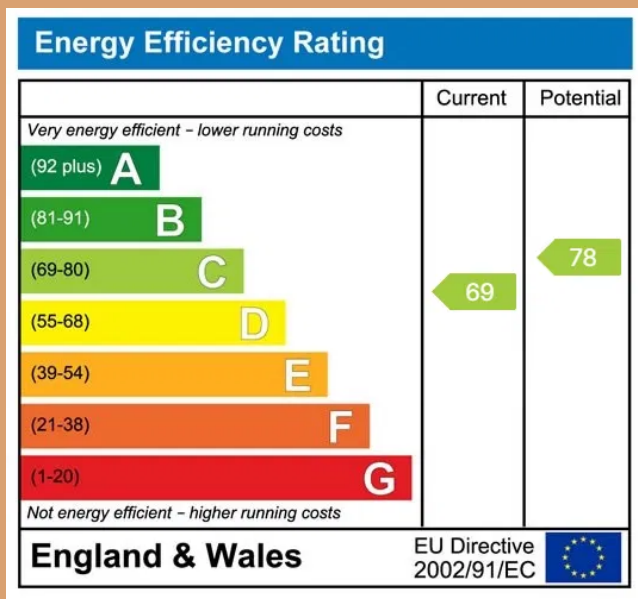
The open-plan reception and sleek modern kitchen has French doors leading out to the private garden, to offer the perfect entertaining space. Natural light pours into the double bedroom through a large bay window overlooking the front patio, featuring an in-built exposed wardrobe, next door to which, is a gorgeous bathroom fitted with both a walk-in shower and a large “Japanese” bathtub.

There is the added bonus of an out-building in the garden, with electricity supply and air conditioning, that is currently used as a home office, for two people, but interchangeable to act as a plethora of secure storage, or a home gym, with pictures to reflect its latter purpose also.

Available from early April, on a furnished basis.







James Marshall

James@arleyproperty.com
07515 448 385

www.arleyproperty.com

arley
property