



Guide Price
£375,000

Freehold

2x  1x  2x 

**Brompton Farm Road,
Strood, Rochester, Kent,
ME2**

OVER 60?

Secure this property
for up to **59% less!**

Wards
Helping you move forwards



Main features

- Offered for sale with no onward chain
- Driveway and car port
- Single store extension providing plenty of extra space
- Desirable and sought after location with easy access for the A2/M2
- Character and period features with original fireplaces

Accommodation

GROUND FLOOR

Entrance Hallway

Lounge: 13'5 x 13'1 (4.09m x 3.99m)

Dining Room : 13'9 x 13'2 (4.19m x 4.02m)

Kitchen : 18'8 x 7'8 (5.69m x 2.34m)

Utility Room : 7'1 x 5'3 (2.16m x 1.60m)

Bathroom : 12'0 x 5'2 (3.66m x 1.58m)

FIRST FLOOR

Landing

Bedroom 1 : 13'6 x 13'0 (4.12m x 3.97m)

Bedroom 2 : 13'8 x 13'1 (4.17m x 3.99m)

OUTSIDE

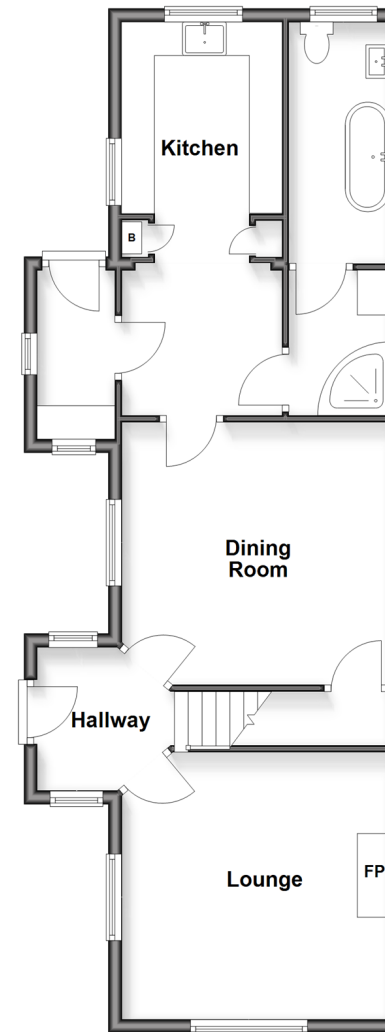
Off Road Parking

Car Port

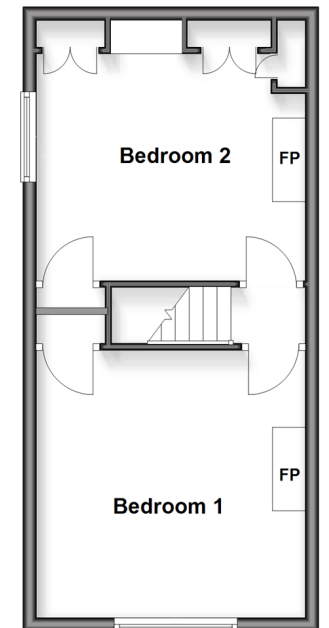
Front Garden

Rear Garden

Ground Floor
Approx. 66.8 sq. metres (718.6 sq. feet)



First Floor
Approx. 36.6 sq. metres (393.7 sq. feet)



Call Strood - 01634 716597 ■ wardsof Kent.co.uk

- Legal advice should be taken to verify fixtures/fittings, planning, alterations and/or lease details
- Appliances & services are untested, dimensions are approximate and floor plans are not to scale
- Through a Homewise Home For Life Plan people aged 60+ can secure this property for up to 59% less, by purchasing a Lifetime Lease



11846889/20260226/DV/CM