



Lampards

lampards.co.uk
0208 208 0055
info@lampards.co.uk

2a Lansdale Road,
Queens Park,
NW6 6RD

Litchfield Gardens,
£475,000

🛏️ 2 🚿 1 🚗 1



Situated on a quiet residential road, a short walk to Willesden Green Station, this beautifully presented ground floor apartment offers an excellent combination of period charm, private outdoor space and superb connectivity.

Benefiting from a share of the freehold and presented in excellent condition throughout, the property features high ceilings, well-proportioned accommodation and an abundance of natural light. The apartment comprises a spacious reception room, well-appointed kitchen, comfortable bedroom accommodation and a stylish bathroom.

A particular highlight is the private rear garden, providing valuable outdoor space.

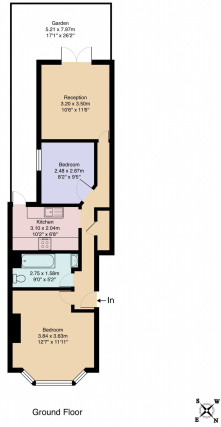
Litchfield Gardens is ideally positioned within easy reach of Dollis Hill and Willesden Green Underground stations (Jubilee Line), offering excellent access to Central London, the City and Canary Wharf. Residents also benefit from the wide range of local amenities, cafés, restaurants and the open green spaces of Gladstone Park, one of North West London's most popular parks.

Combining attractive period features, private outdoor space and a highly convenient location, this is an exceptional home suited to both owner-occupiers and investors alike.



Lampards

Litchfield Gardens, NW10
Total Area: 55.9 sq. ft. (including parking)



- Beautifully presented ground floor apartment
- Private rear garden
- Excellent condition with no onward works required
- Walking distance to Dollis Hill Underground Station (Jubilee Line)
- Close to local amenities, cafés, restaurants and Gladstone Park
- Share of freehold
- High ceilings throughout
- Spacious and naturally bright accommodation
- A short walk to Willesden Green Underground Station
- Offered Chain Free



Score	Energy rating	Current	Potential
92+	A		
81-91	B		
69-80	C		75 C
55-68	D	61 D	
39-54	E		
21-38	F		
1-20	G		

