



Shepherds Bush Road, W6

£380 Per week

A beautifully presented modern studio apartment set within an iconic Art Deco building in The Grampians, W6, featuring original parquet flooring that adds character and charm.

The property offers a spacious open-plan living area with built-in wardrobes, leading out onto a spectacular L-shaped balcony boasting stunning views.

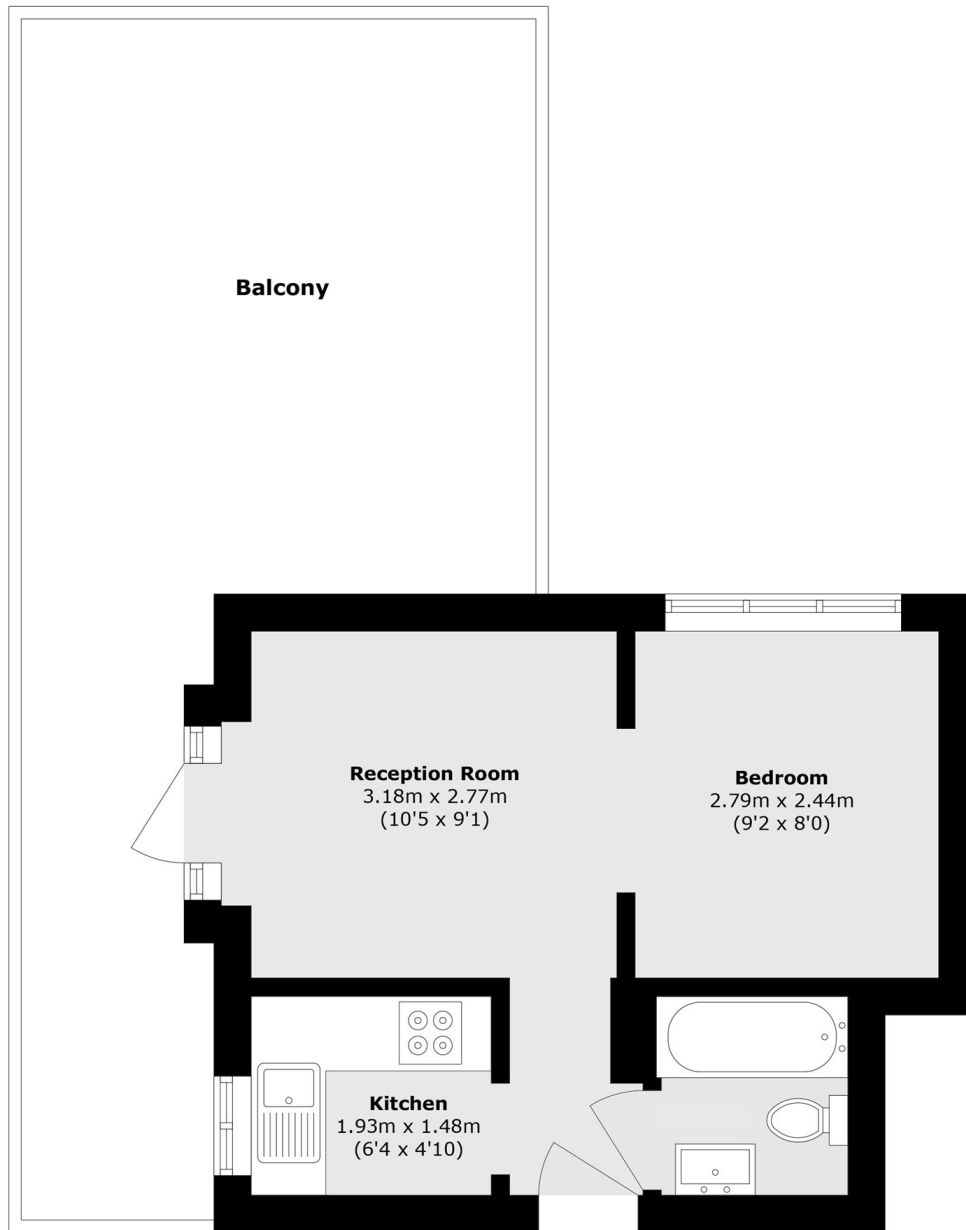
There is also a separate kitchen and a well-appointed bathroom with a shower over the bathtub. Additional benefits include heating and hot water included in the rent, exceptionally low council tax (approximately £846 for single occupancy), as well as 24-hour porter service and lift access for added convenience and security.

The Grampians is ideally situated in W6 7NB, in the heart of West London's Hammersmith area. The building is located on Shepherds Bush Road, making it incredibly easy to access whether travelling by car, bus, or Underground. The nearest stations are Hammersmith Underground Station (District, Piccadilly, Circle & Hammersmith & City lines) and Shepherd's Bush Underground Station, both within a comfortable walking distance of approximately 812 minutes. Kensington (Olympia) Station is also nearby, providing additional Overground and National Rail connections. Multiple bus routes run along Shepherds Bush Road, offering quick and direct links into

Features

- Large Studio
- Large Wrap Balcony
- Heating and hot water inc.
- 8th Floor
- Lift Access
- Stunning Views

Shepherds Bush Road, London, W6



Total area (approx.): 24.1 sq. m (259.4 sq. ft)
Balcony area (approx.): 26.6 sq. m (286.3 sq. ft)