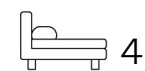




Living
made
better

Hamilton Road
Brentford, TW8 0QF



£3,000 PCM

Hamilton Road, Brentford, TW8 0QF

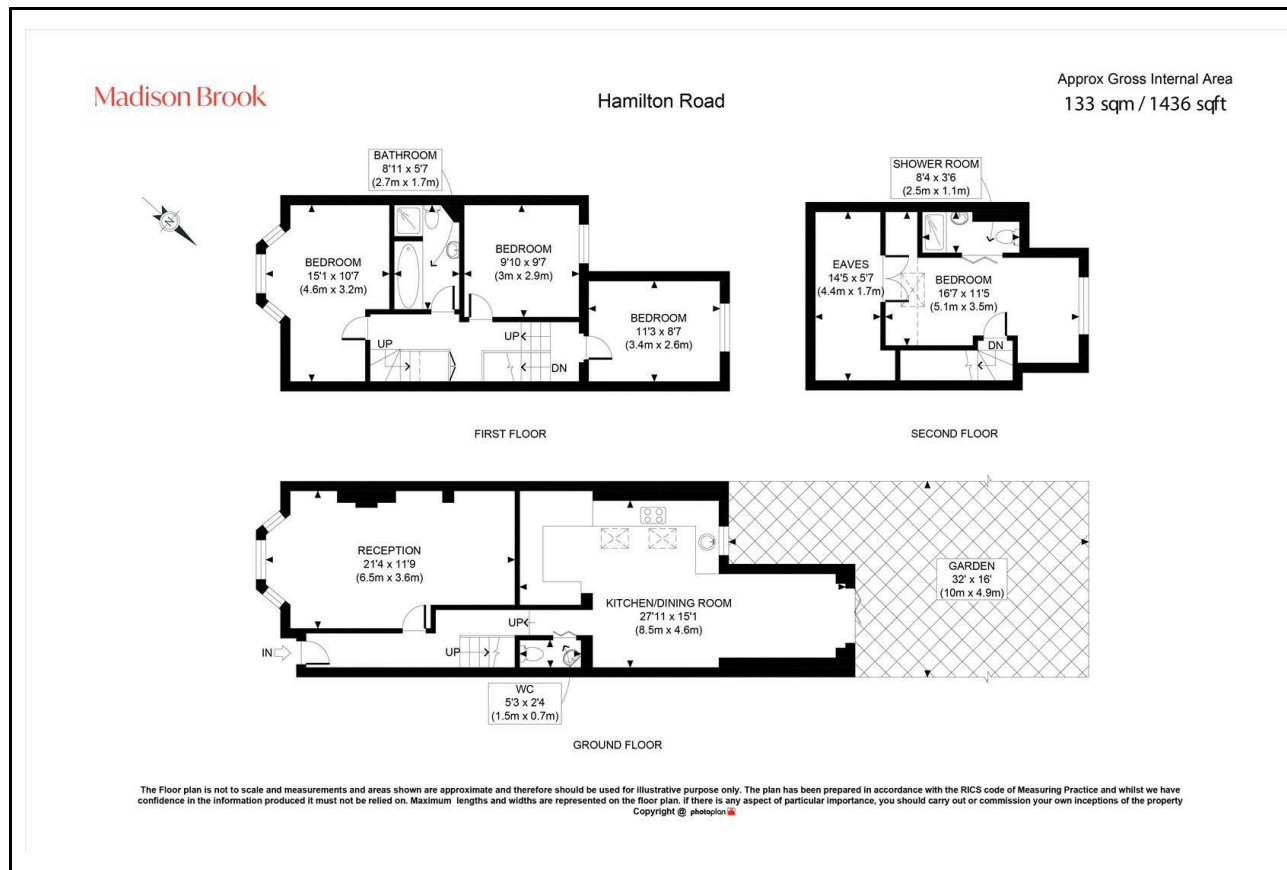
Madison Brook

Property Summary

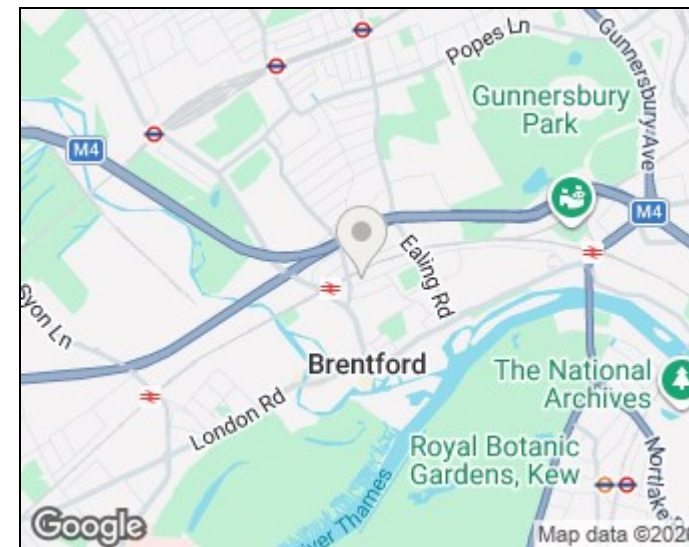
This four-bedroom, two-bathroom Victorian home on Hamilton Road offers stylish and spacious living across three floors. The ground floor includes a large double reception and an open-plan kitchen/dining room with bifold doors to a private garden. Upstairs are three bedrooms and a family bathroom, with a top-floor principal suite with en-suite and storage.

Available immediately, the home is located close to Brentford Station, Boston Manor (Piccadilly Line), the River Thames, and Syon Park.

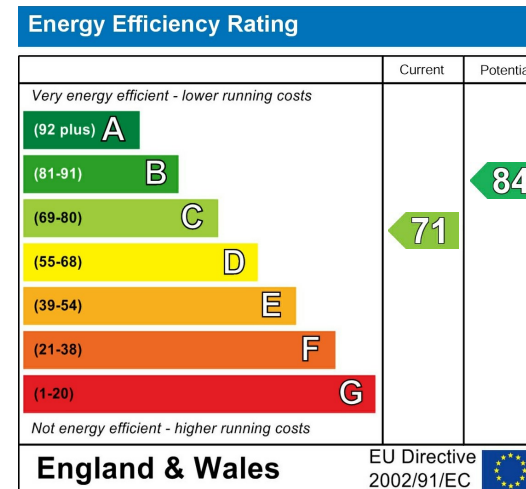
Floorplan



Area Map



Energy Efficiency Graph



These particulars, whilst believed to be accurate are set out as a general outline only for guidance and do not constitute any part of an offer or contract. Intending purchasers should not rely on them as statements of representation of fact, but must satisfy themselves by inspection or otherwise as to their accuracy. No person in this firm's employment has the authority to make or give any representation or warranty in respect of the property.

181 Chiswick High Road, Chiswick, London, W4
2DR

Tel: 020 3946 6600 Email:
chiswick@madisonbrook.com
<https://madisonbrook.com/>