



## Bretforton Road, Badsey, Evesham, WR11 7XQ

Guide Price £350,000

🛏️ 3 🚿 2 🚗 2

- Chain-free detached bungalow in the sought-after village of Badsey
- Two bathrooms, including en-suite to principal bedroom
- Converted garage creating a spacious principal bedroom
- Open-plan kitchen/dining room with integrated appliances
- Off-road parking and low-maintenance accommodation throughout
- Two/three bedrooms with flexible layout
- Tenant currently in situ – available as an investment or with vacant possession
- Conservatory and utility room added by current owners
- Double glazing and gas central heating
- Enclosed rear garden with large patio area



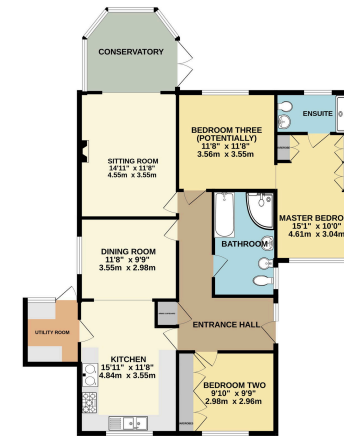
NO ONWARD CHAIN, this well-presented two/three-bedroom detached bungalow is located in the sought-after village of Badsey and offers flexible accommodation, off-road parking, and low-maintenance gardens.

The accommodation has been significantly improved by the current owners and benefits from double glazing and gas central heating.

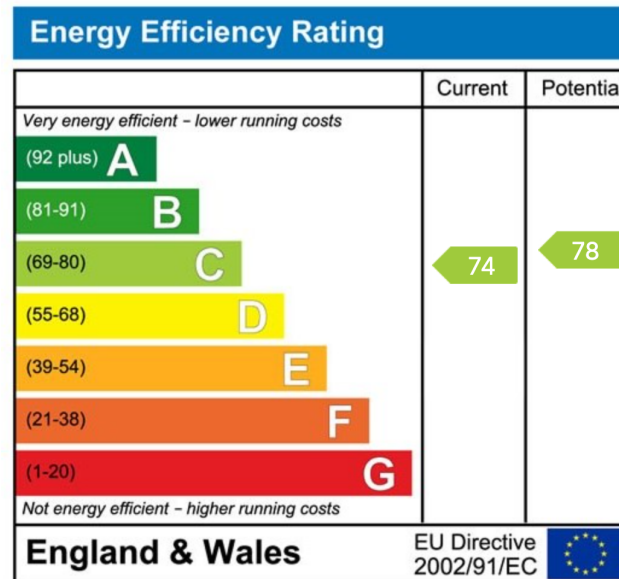




GROUND FLOOR  
1293 sq. ft. (120.1 sq.m.) approx.



TOTAL FLOOR AREA: 1293 sq.ft. (120.1 sq.m.) approx.  
When any agency has been used to create the accuracy of the description of the property, the agency is not responsible for any errors or omissions. The agency is not responsible for any errors or omissions. The agency is not responsible for any errors or omissions. The agency is not responsible for any errors or omissions.



Sunnydale, 34 Weston Road, Bretforton, Worcestershire WR11 7HW

Telephone: 01386 833969 ■ Email: [joe@chattertonestates.co.uk](mailto:joe@chattertonestates.co.uk) ■ [www.chattertonestates.co.uk](http://www.chattertonestates.co.uk)