



KENSINGTON PARK ROAD, W11

£750,000

West Facing Reception Room

One Double Bedroom

Excellent Condition

Separate Kitchen

Prime Notting Hill

Third Floor Flat

@marshandparsons
marshandparsons.co.uk

MARSH &
PARSONS



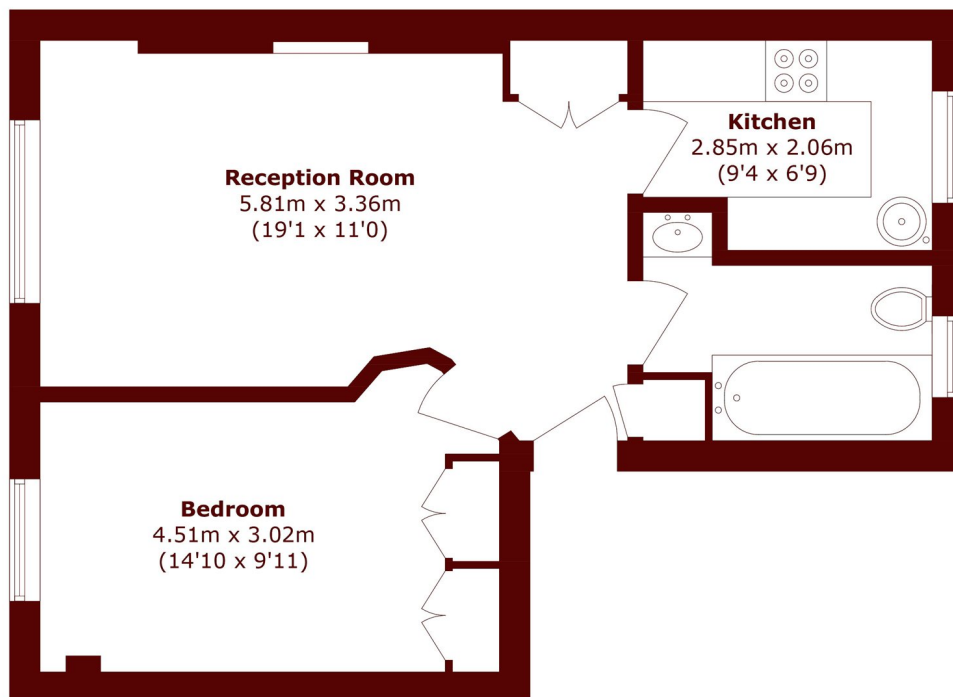
ABOUT THE PROPERTY

Presented in excellent decorative order throughout, the accommodation features a charming reception room with ample space for dining, enhanced by high ceilings and a bright westerly aspect. In addition, there is a contemporary, fully integrated separate kitchen, a generous double bedroom, and a stylishly finished bathroom complete with a bath.

This property is ideally positioned on Kensington Park Road, opposite Stanley Gardens, with a wealth of boutique shops, cafés and restaurants just moments away. The world-renowned Portobello Road is just around the corner, while Westbourne Grove and The Ledbury are also close by. Excellent transport links are available from



STEP INSIDE KENSINGTON PARK ROAD



Third Floor

Total area (approx.): 44.6 sq. m (480.1 sq. ft)

Notting Hill
020 7313 2890

Energy Rating: TBC We aim to make our particulars both accurate and reliable. However, they are not guaranteed; nor do they form part of an offer or contract. If you require clarification on any points then please contact us, especially if you're traveling some distance to view. Please note that appliances and heating systems have not been tested and therefore no warranties can be given as to their good working order.

MARSH &
PARSONS