

5 Victoria Terrace, Gateshead, NE9 7JT

Offers Over £109,950

Located in Wrekenton, this well-presented terraced house on Victoria Terrace offers a delightful blend of comfort and convenience. With two spacious bedrooms and a well-appointed bathroom, this property is perfect for small families, couples, or individuals seeking a welcoming home. Upon entering, you are greeted by a charming entrance hallway that leads to a cosy lounge, featuring a lovely fireplace that adds character to the space. The internal hallway boasts built-in storage, providing practical solutions for your belongings. The dining kitchen is a highlight, equipped with an integrated double oven and a free-standing washing machine, making it an ideal space for culinary enthusiasts and family gatherings. The first floor landing leads to the bathroom and two generously sized bedrooms. The main bedroom benefits from built-in double robe storage, ensuring ample space for your wardrobe needs, while the second bedroom is also a good size, perfect for guests or as a home office. A gated yard to the rear provides an ideal outdoor area. This property is ideally located, with easy access to local amenities, hospitals, and excellent transport links, making it a convenient choice for daily living. Viewings are highly recommended to fully appreciate the charm and potential of this lovely home. Don't miss the opportunity to make this terraced house your own.

ENTRANCE HALLWAY

LOUNGE

16'11" x 12'7" into alcove (5.18m x 3.86m into alcove)



INTERNAL HALLWAY

DINING KITCHEN

15'11" x 12'4" red to 6'11" (4.86m x 3.77m red to 2.13m)



FIRST FLOOR LANDING



BATHROOM

6'1" x 5'10" (1.86m x 1.78m)



BEDROOM ONE

15'0" x 8'11" (4.58m x 2.73m)

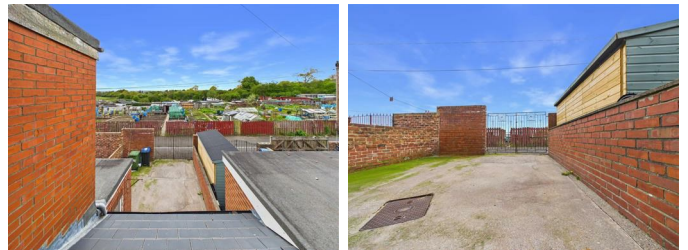


BEDROOM TWO

9'3" x 7'7" (2.83m x 2.33m)



EXTERNAL

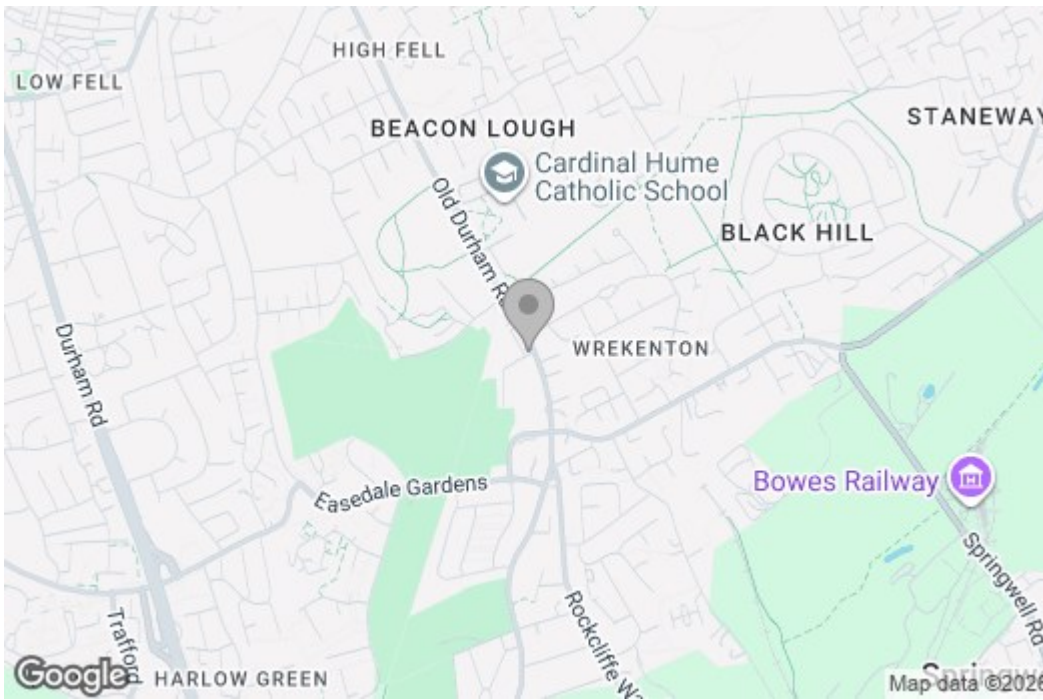


Property disclaimer

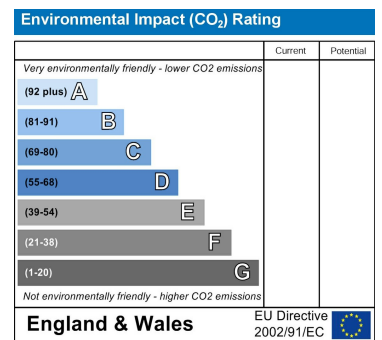
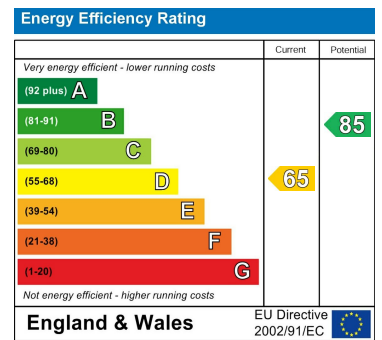
IMPORTANT NOTE TO PURCHASERS: We endeavour to make our sales particulars accurate and reliable, however, they do not constitute or form part of an offer or any contract and none is to be relied upon as statements of representation or fact. The services, systems and appliances listed in this specification have not been tested by us and no guarantee as to their operating ability or efficiency is given. All measurements have been taken as a guide to prospective buyers only, and are not precise. Floor plans where included are not to scale and accuracy is not guaranteed. If you require clarification or further information on any points, please contact us, especially if you are travelling some distance to view. Fixtures and fittings other than those mentioned are to be agreed with the seller. We cannot also confirm at this stage of marketing the tenure of this house.

Floor Plan

Area Map



Energy Efficiency Graph



These particulars, whilst believed to be accurate are set out as a general outline only for guidance and do not constitute any part of an offer or contract, purchaser should not rely on them as statements of representation of fact, but must satisfy themselves by inspection or otherwise as to their accuracy. No person in this firm's employment has the authority to make or give a representation or warranty in respect of the property.