



Southwood Park, Southwood Lawn Road, Highgate Village, N6

Share of Freehold

£1,050,000



44 Highgate High Street, Highgate Village, London, N6 5HX

020 8348 8000

highgate@litchfields.com

www.litchfields.com

Offices also in Hampstead Garden Suburb



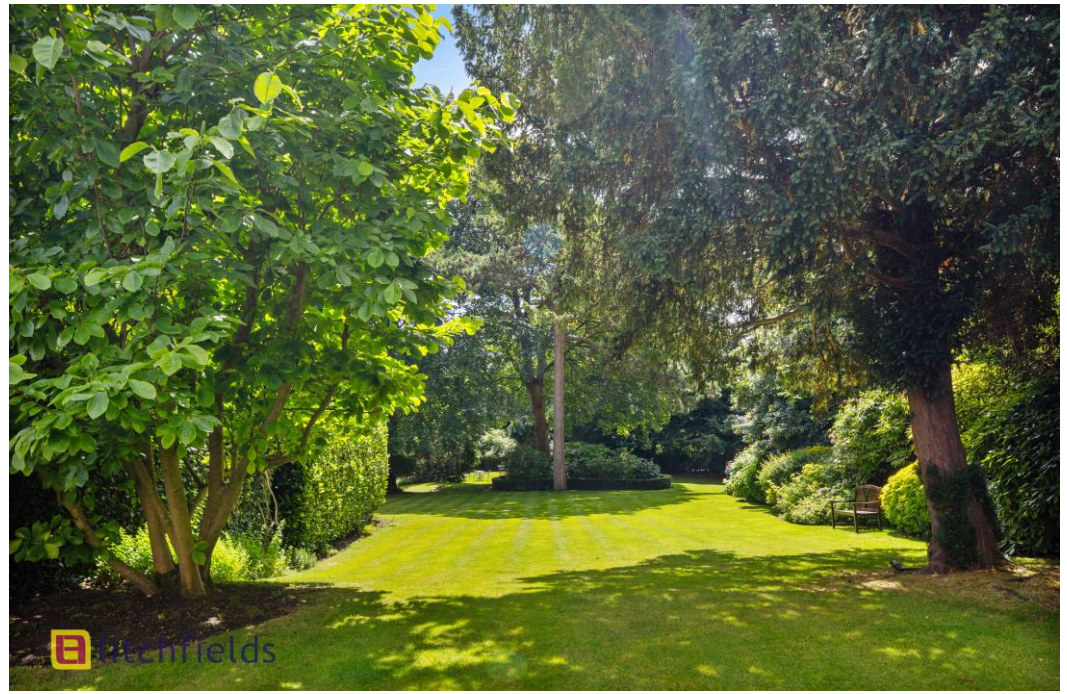
Litchfields are pleased to offer a spacious 3-bedroom apartment set on the third floor (with lift) of a highly regarded and well-maintained Highgate Village purpose-built block. The flat has generous entertaining space with an entry/dining hallway, and a sunny, south facing reception room with a full height sliding door on to balcony overlooking the expansive and beautifully landscaped communal gardens and recently refurbished, heated swimming pool. Further accommodation comprises a fitted kitchen, 3 bedrooms, the principal with an en-suite Shower room and a separate bathroom. The flat also benefits from a ground floor storage area, resident building manager, and a garage (available on a separate lease). The block is enviably positioned on a quiet residential road a stone's throw from all the amenities of historic Highgate Village and excellent transport links to central London and the City including Highgate tube station (Northern Line) as well as the lovely green spaces of Highgate and Queen's Woods, Waterlow Park and the delights of Kenwood and Hampstead Heath. Offered for sale Chain Free

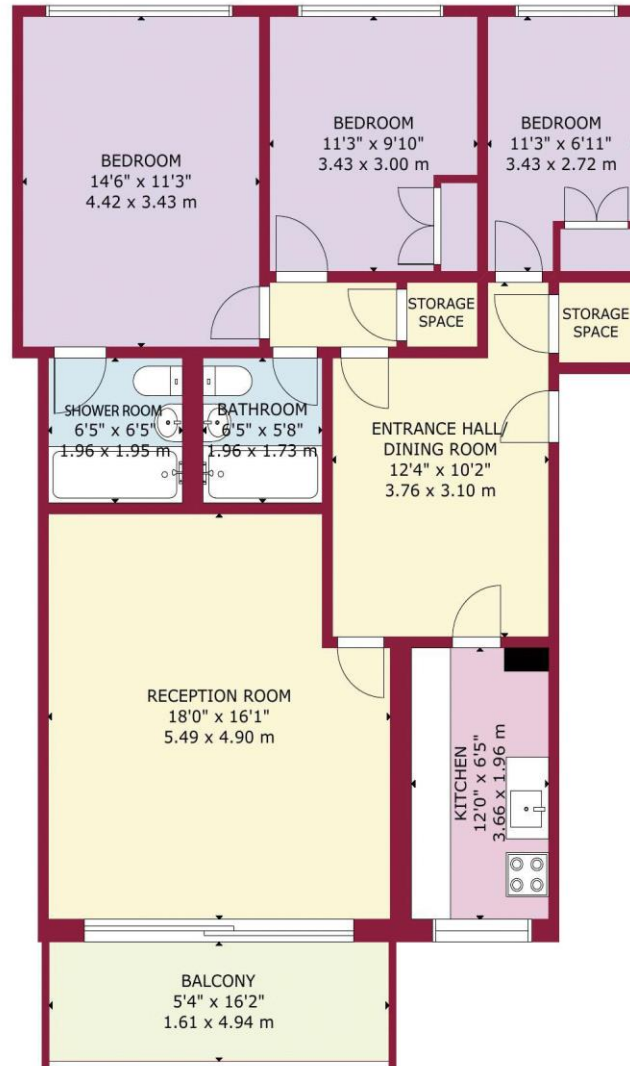




- Chain Free Highgate Village purpose-built block
- Dining/entrance hall
- South facing reception with garden views
- Kitchen
- 3 bedrooms
- Bathroom and en-suite shower room
- South facing balcony overlooking gardens
- Expansive communal gardens and swimming pool
- Store room and garage available on separate lease
- Resident Porter







GROUND FLOOR

GROSS INTERNAL AREA
 TOTAL: 96 m²/1,028 sq.ft
 GROUND FLOOR: 96 m²/1,028 sq.ft
 SIZE AND DIMENSIONS ARE APPROXIMATE, ACTUAL MAY VARY



44 Highgate High Street, Highgate Village, London, N6 5HX

020 8348 8000

highgate@litchfields.com

www.litchfields.com

Offices also in Hampstead Garden Suburb

