



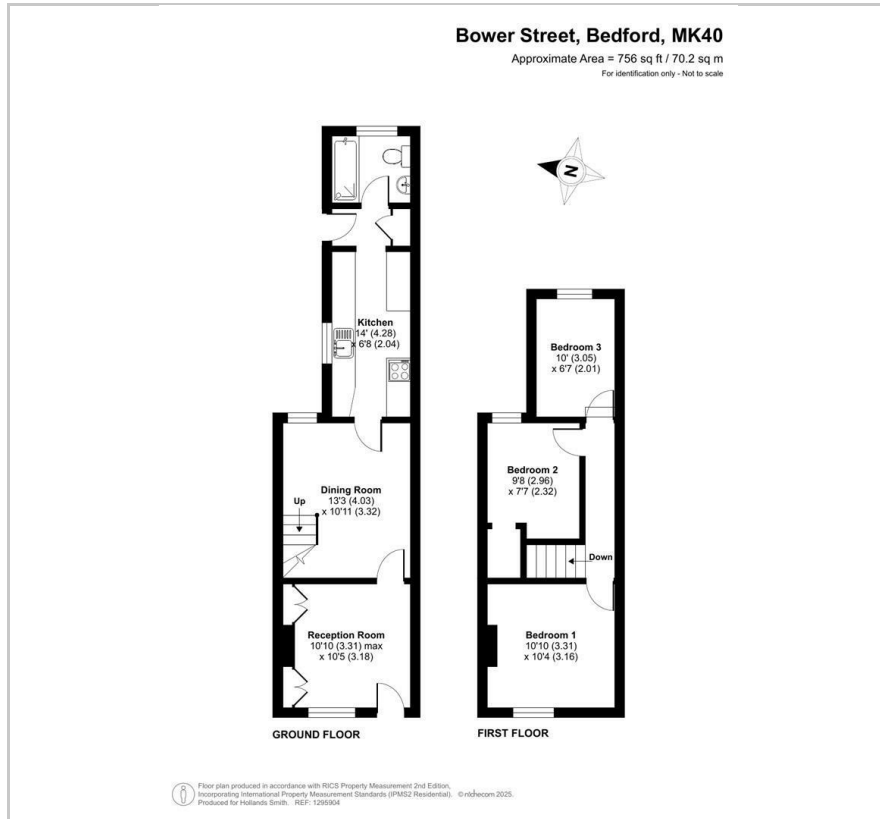
29 Bower Street

, Bedford, MK40 3RD

£1,300 Per Month



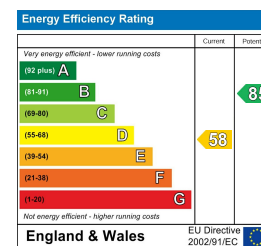
Floor Plan



Area Map



Energy Efficiency Graph



Viewing

Please contact our Bedford Office on 01234 216612 if you wish to arrange a viewing appointment for this property or require further information.

- Freshly Decorated Period Home
- Three Bedrooms
- Close to Park
- Sitting & Dining Rooms
- Kitchen & G/F Bathroom
- Good Sized Rear Garden
- Gas Radiator Heating
- Replaced uPVC Double Glazing
- No Onward Chain
- Close to Coffee Shops, Delis & Restaurants



This period terraced home lies just a few yards from Russell Park and is within a short stroll of the range of amenities on the bustling Castle Road. The freshly decorated accommodation features new carpets throughout. There are separate sitting and dining rooms, a kitchen, three bedrooms and a ground floor bathroom. The easily maintained rear garden is deeper than most within the area. Well maintained and presented, the property features gas radiator heating and uPVC double glazing throughout. Russell Park is on the doorstep with the picturesque Embankment and attractive river walks beyond. Unfurnished



163 Castle Road, MK40 3RT

Tel: 01234 216612

www.hollandsmith.co.uk