



Atlas Building, 145 City Road, London EC1V 1AX

 **1 Bedroom**

 **1 Bathroom**

 **1 Reception Room**



Atlas Building, 145 City Road, London EC1V

Leasehold (990 years remaining)

A sophisticated apartment on the 16th floor within The Atlas, offering contemporary open-plan living and a private balcony with far-reaching London views

Key Feature

- 1 Bedroom, 1 Bathroom
- Service Charge: **£7,400 P/A**
- Lift
- Ground Rent: **£500 P/A**
- On-site concierge services
- Excellent transport links
- Council Tax: **D**
- EPC: **B**

The apartment features an open-plan reception and kitchen area that maximises both space and natural light, creating an ideal environment for contemporary living and entertaining. The integrated kitchen comes fully equipped with modern appliances, while the generous reception area flows seamlessly onto the private balcony, a rare outdoor sanctuary perfect for morning coffee or evening relaxation whilst taking in the capital's dramatic vistas.

The bedroom provides comfortable accommodation, complemented by a stylish bathroom suite finished to an excellent standard.



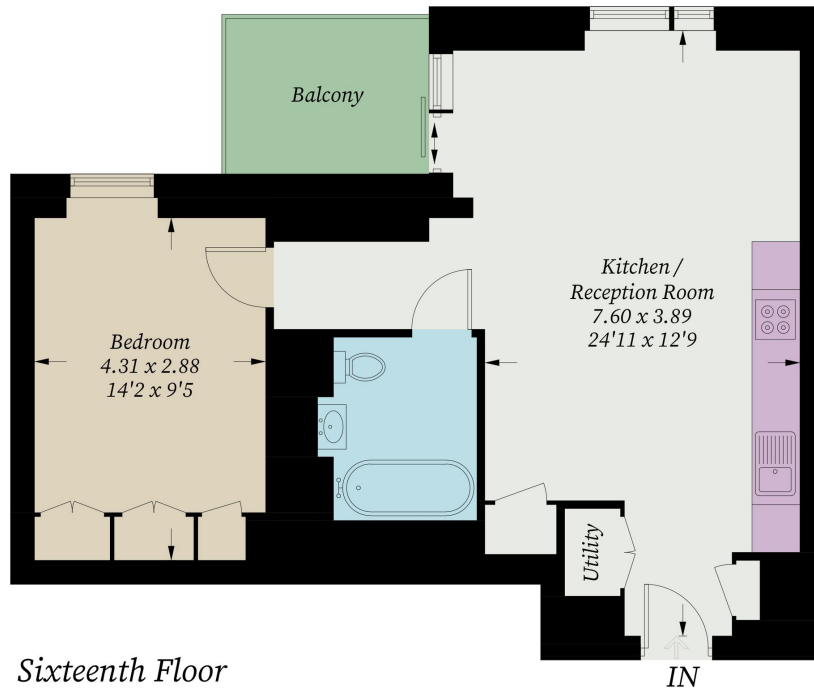






Atlas Building, City Road

Approximate Gross Internal Area = 52.02 sq m / 560 sq ft



Sixteenth Floor

Illustration for identification purposes only, measurements are approximate, not to scale. Fourlabs.co © (ID1312871)