



## Regents Park Road, NW1

### £650,000

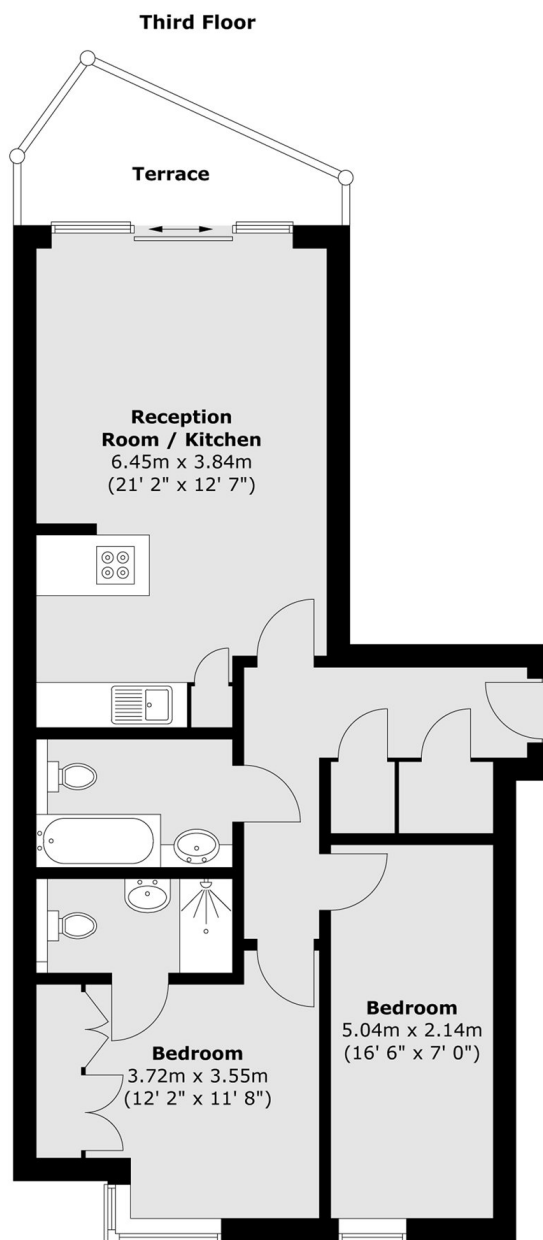
A two double bedroom apartment set on the third floor of a secure modern block, moments away from Chalk Farm station. The property has an open plan reception room/kitchen, two bathrooms and a south facing balcony.

Regents Park Road is within easy reach of an abundance of shops, bars and entertainment venues, including the world famous Roundhouse and a short walk to Primrose Hill.

### Features

- Two Bedrooms
- Two Bathrooms
- South Facing Balcony
- Long Lease
- Underground Parking
- Chain Free

# Regents Park Road, London, NW1



Total area (approx.) : 65.9 sq. m (709 sq. ft)  
Total terrace area (approx.) : 5.1 sq. m (55 sq. ft)