



128 Merrill Road

Thurnscoe, Rotherham, S63 0PP

Offers Over £150,000

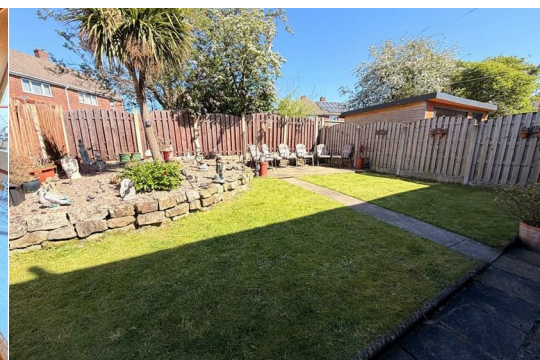


This spacious three-bedroom semi-detached home is situated on the popular Merrill Road in Thurnscoe and would ideally suit those wishing to put their own stamp on a property. However, it has been meticulously maintained by the current owners and benefits from a newly fitted boiler within recent years.

The property offers excellent accommodation throughout, including a lounge, kitchen, and dining room, along with three good-sized bedrooms.

Externally, the home benefits from a driveway providing off-road parking, front and rear gardens, and outbuildings offering a useful utility space with plumbing.

Offered to the market with no vendor chain, this is a fantastic opportunity not to be missed.



GROUND FLOOR

ENTRANCE HALL

Accessed via a composite entrance door, the hallway provides useful storage and stairs rising to the first floor landing.

LOUNGE

A lovely and spacious front-facing lounge boasting a bay-style double glazed window, TV aerial point, and radiator.

KITCHEN

The kitchen is spacious and open plan with the dining room, fitted with a range of wall and base units with work surfaces over, incorporating a sink unit with mixer tap. Integrated appliances include an oven, hob, extractor, fridge, and freezer. There is also a handy pantry space and a rear-facing double glazed window.

DINING

Benefiting from sliding doors opening onto the rear garden, double doors leading to the dining area, and ample space for a table and chairs.

FIRST FLOOR

LANDING

The landing benefits from loft access, a side-facing double glazed window, and useful built-in storage.

BEDROOM ONE

A spacious bedroom featuring fitted furniture, a front-facing double glazed window, and radiator.

BEDROOM TWO

A further well-proportioned double bedroom featuring a rear-facing double glazed window and radiator.

BEDROOM THREE

A good-sized third bedroom with a front-facing double glazed window, fitted storage, and radiator.

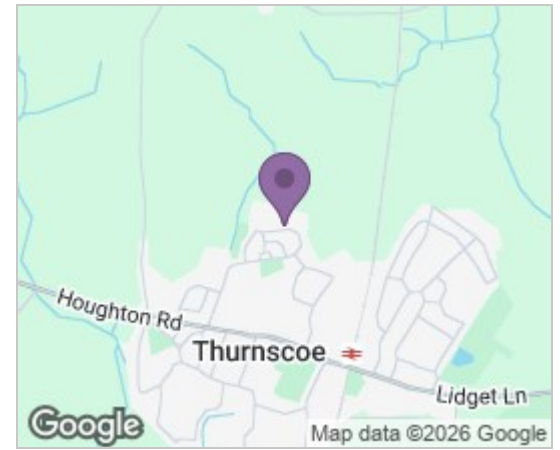
SHOWER ROOM

Comprising a double walk-in shower, WC, and wash hand basin, complemented by a window with obscure glazing and a radiator.

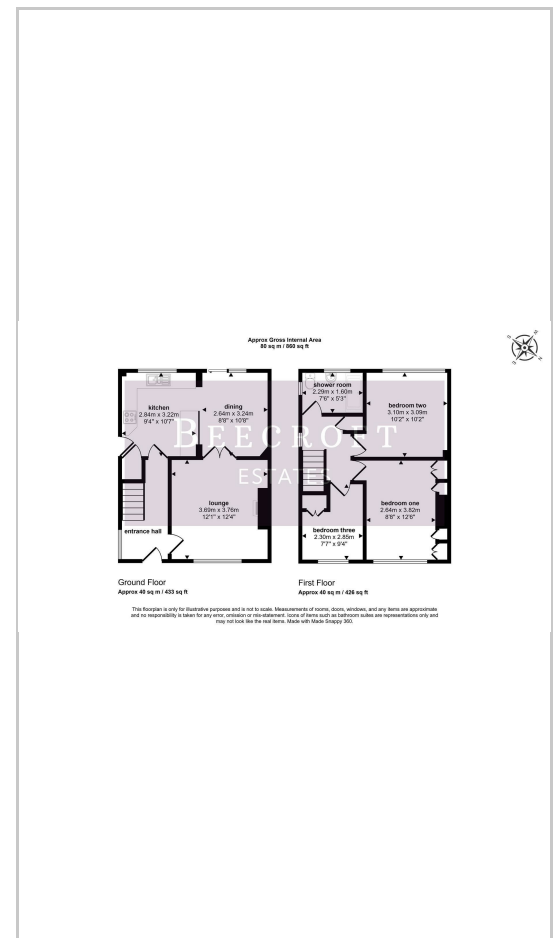
OUTSIDE

To the front is gated access leading to a block-paved driveway providing off-road parking. There are outbuildings offering plumbing for a washing machine and dryer. To the rear is a lovely sized garden with a lawned area and patio seating space.

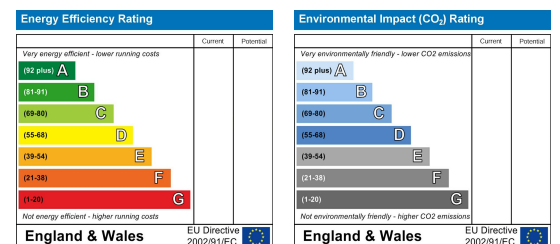
Area Map



Floor Plans



Energy Efficiency Graph



These particulars, whilst believed to be accurate are set out as a general outline only for guidance and do not constitute any part of an offer or contract. Intending purchasers should not rely on them as statements of representation of fact, but must satisfy themselves by inspection or otherwise as to their accuracy. No person in this firm's employment has the authority to make or give any representation or warranty in respect of the property.

Wombwell 6-8 Park Street, Wombwell, S73 0DJ

Tel: 01226 340110 Email: info@beecroftestates.co.uk www.beecroftestates.co.uk