

# Waldeck Mews

Chiswick, W4

**Dexters**

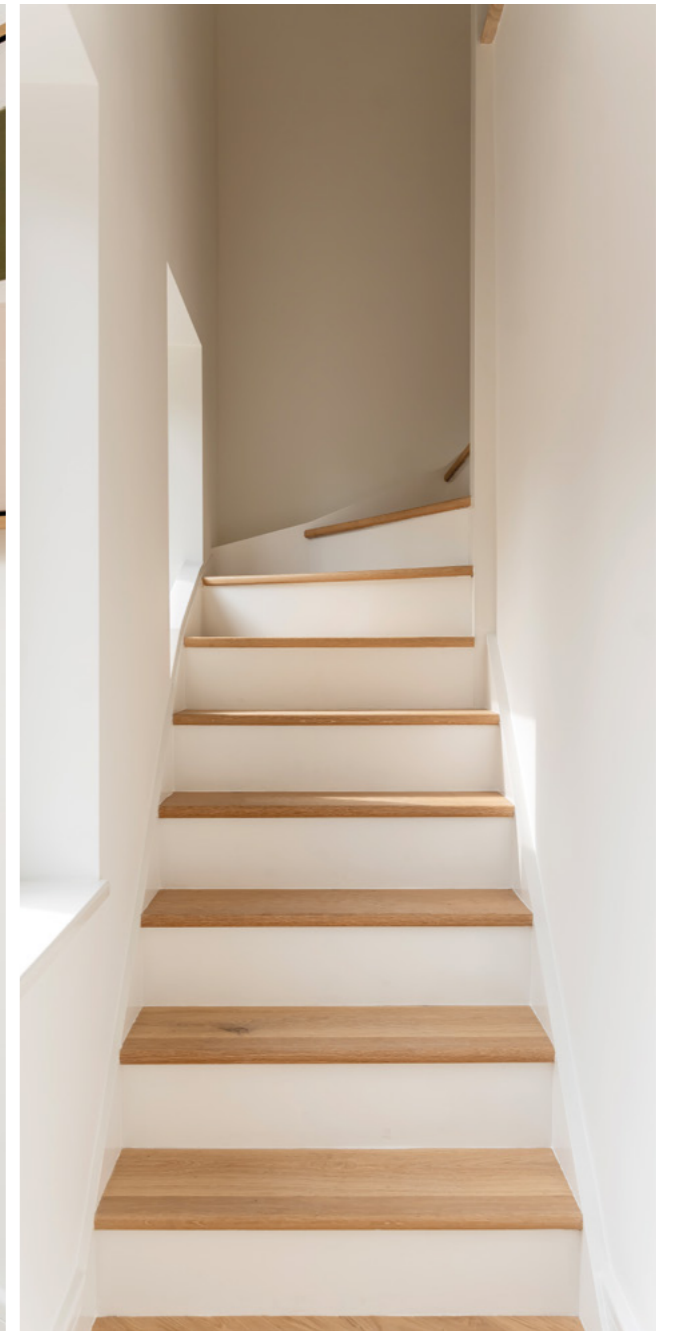


## Welcome to Waldeck Mews

Waldeck Mews is a brand new boutique development of just 5 luxury homes. Each home has been carefully crafted with a high specification and a light and airy feel.

These homes are ideally located just off Strand on the Green, the stunning Thames side location in Chiswick with access to the Thames path. There are a few independent shops close by along with riverside gastro pubs, cafes and restaurants. The development provides excellent transport links with direct links to London Waterloo.

These homes provide a range of options for those looking to reside near the lush landscapes of Kew Gardens and the historic charm of Chiswick House Grounds, all while enjoying modern amenities and excellent connectivity to central London.



\*CGI imagery is indicative and may differ from the final product.

## Specification

### Kitchen

- Hotpoint 70/30 fridge freezer
- Hotpoint dishwasher
- Hotpoint washer dryer
- Hotpoint hob
- High specification kitchens with stylish handleless wall and base units
- Luxurious and hard wearing 20mm Carrara Vito Quartz stone worktop, upstanding and splashback
- Kitchen tap mounted to work surface

### Bathroom

- Stylish black finishing giving a modern look
- Black heated towel rail
- LED Mirror with shaving/toothbrush port

### Heating and electrics

- High specification solid core painted doors
- Black stylish handles, hinges, sockets and radiators
- Luxury spacious hallways with skylight at top floor

### Interiors

- Black power points in all areas
- Walls painted in emulsion paints
- Engineered floor in hallways, kitchen, living space and bedrooms
- Porcelain tiling in building entrance

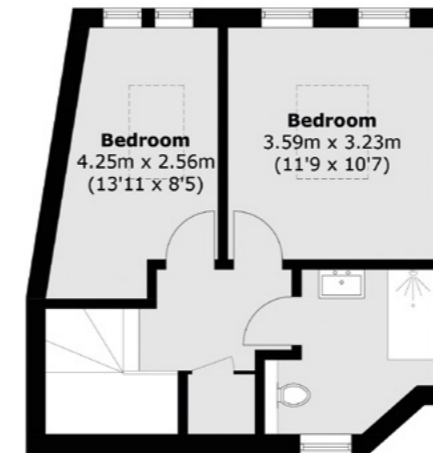
### Security & External

- Intercom phones
- Secure bike storage
- Private bin storage

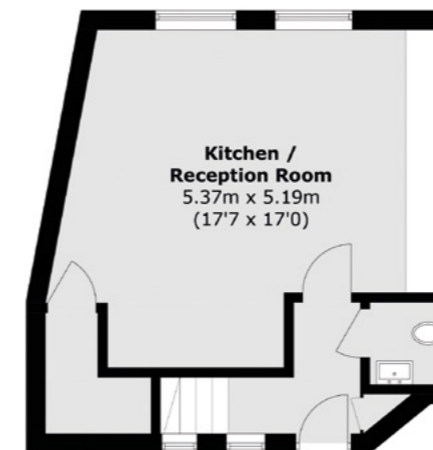
## Floorplans

Property 1

First Floor



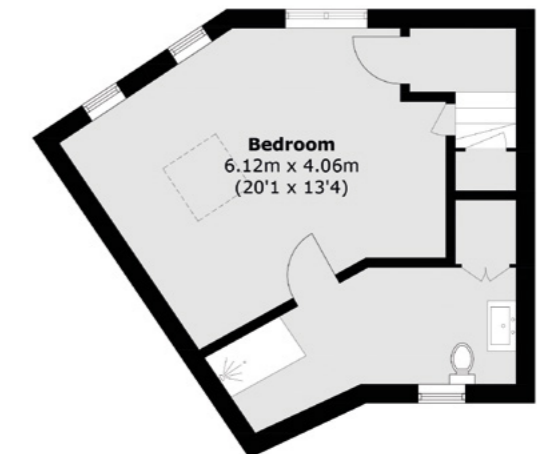
Ground Floor



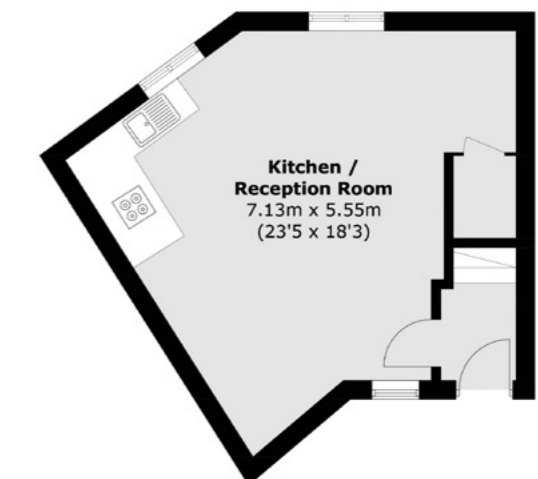
Total Area (approx.):  
72.5 sq. m (780.4 sq. ft)

Property 2

First Floor



Ground Floor

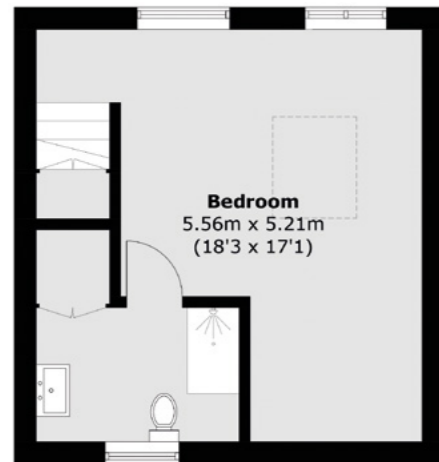


Total Area (approx.):  
68.4 sq. m (736.2 sq. ft)

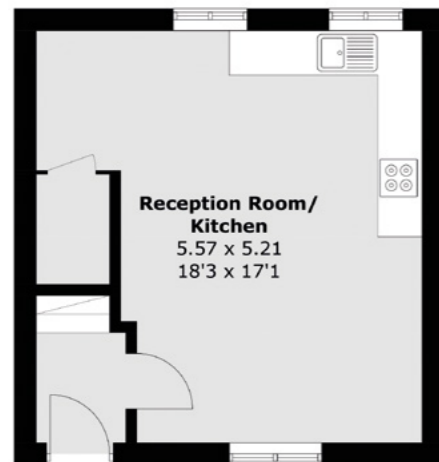
## Floorplans

Property 3

First Floor



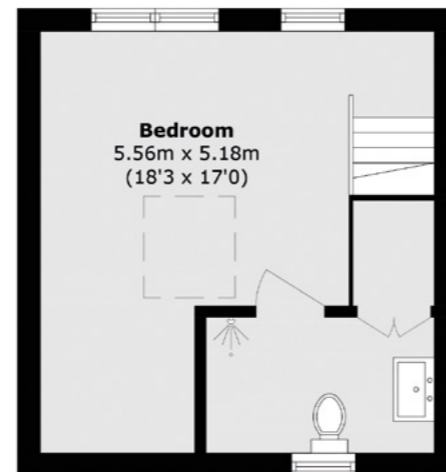
Ground Floor



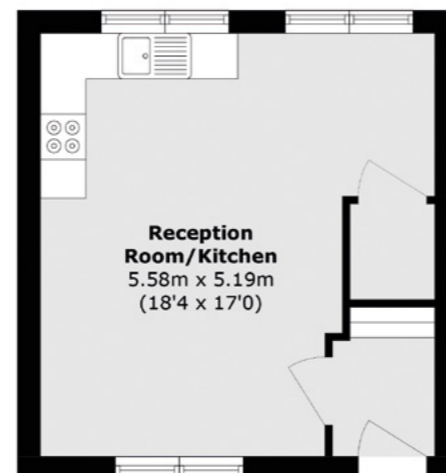
Total Area (approx.):  
58.1 sq. m (625.3 sq. ft)

Property 4

First Floor



Ground Floor

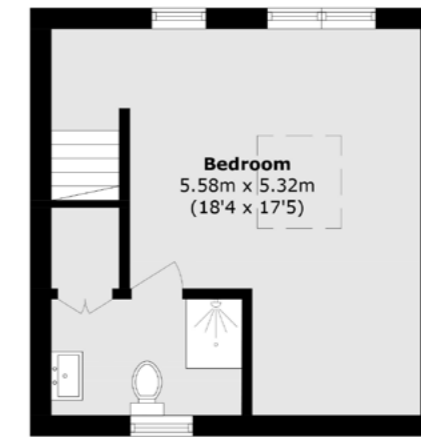


Total Area (approx.):  
57.7 sq. m (621.0 sq. ft)

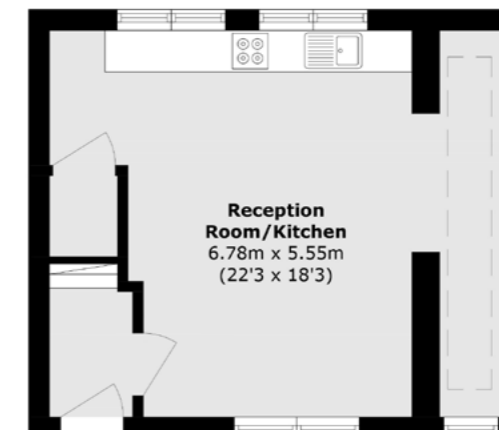
## Floorplans

Property 5

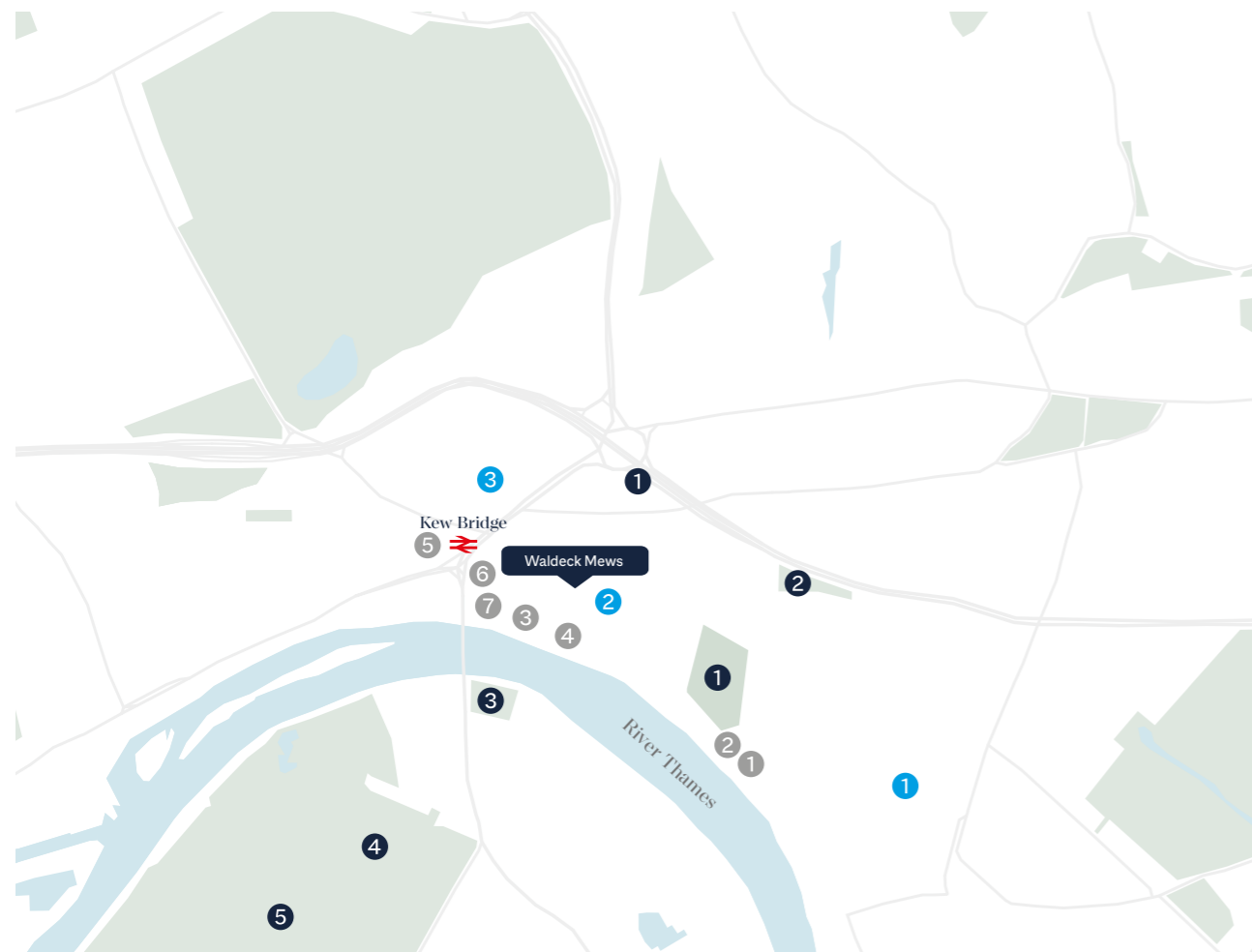
First Floor



Ground Floor



Total Area (approx.):  
68.2 sq. m (734.1 sq. ft)



#### Eating, dining and amenities

1. Annie's,
2. The City Barge
3. The Bell & Crown
4. The Steam Packet
5. Costa
6. Strand cafe
7. Ecolavera restaurant

#### Parks and recreation

1. Strand on the Green
2. Harvard Hill
3. Westerley Ware
4. Kew Green
5. Kew Gardens

#### Schools

1. Grove Park School
2. Strand on the Green Junior School
3. Kew House School

Strand-on-the-Green is a charming riverside hamlet in Chiswick, West London, known for its historic character and stunning Thames views. Lined with 18<sup>th</sup>-century cottages and period homes. The scenic riverside path is perfect for leisurely strolls, cycling, and rowing, attracting both locals and visitors. Several traditional pubs, such as The Bell & Crown and The City Barge, offer picturesque settings for dining and drinks by the water. Rich in history and community spirit, Strand-on-the-Green provides a peaceful retreat from London's hustle, making it one of the city's most enchanting and sought-after riverside locations.

New Homes West London  
 20 Claremont Road,  
 Surbiton,  
 KT6 4QU  
 020 8614 1222  
[newhomeswest@dexters.co.uk](mailto:newhomeswest@dexters.co.uk)

# Dexters

[dexters.co.uk](https://dexters.co.uk)