



Penrith Crescent, Wickford

In Excess of £450,000



Penrith Crescent

Wickford, Wickford

* Guide Price £450,000 – £475,000 * This stylishly presented three-bedroom modern semi-detached family home offers the perfect blend of contemporary living and everyday convenience, situated just a short walk away from Wickford mainline station with its direct links into London. Council Tax band: D

Tenure: Freehold

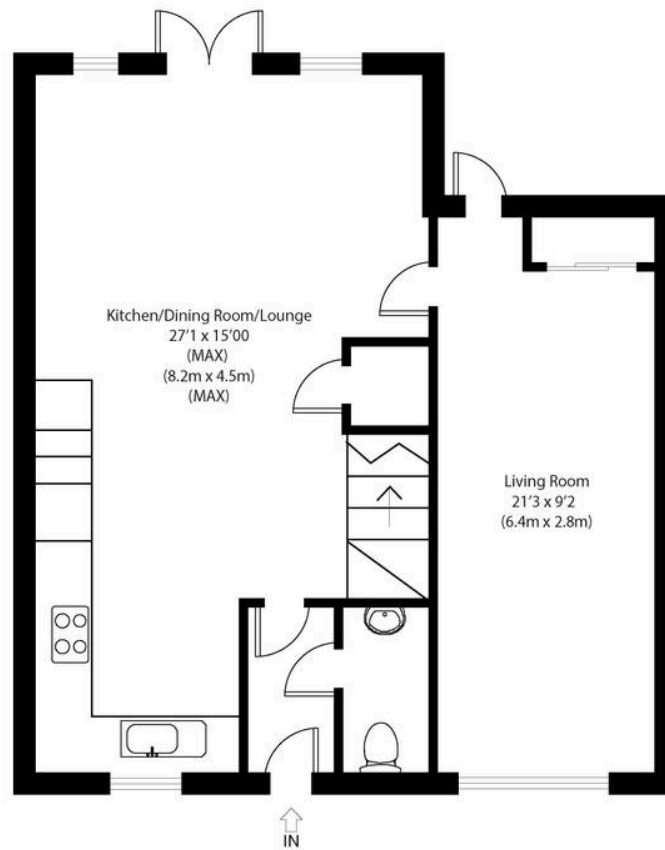
EPC Energy Efficiency Rating: TBC

- Stylishly presented throughout
- Impressive open-plan kitchen/dining/reception room
- Close to highly regarded local schools
- Second reception room/home office
- Two contemporary bathrooms including ensuite to main bedroom
- Downstairs cloakroom
- Delightful landscaped private rear garden
- Three bedroom semi-detached executive family home
- Versatile accommodation
- Driveway parking

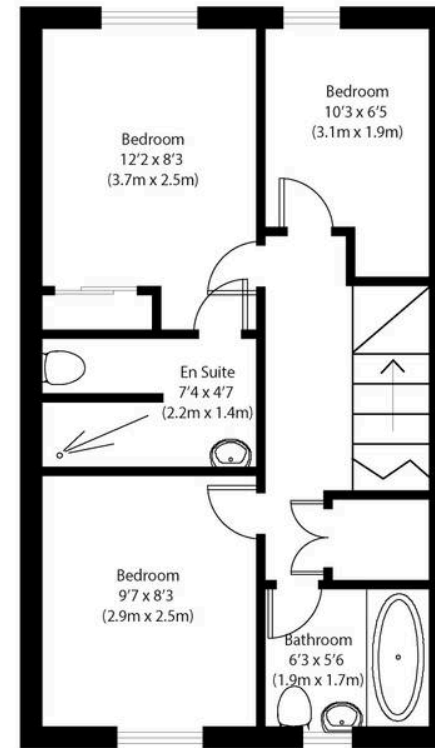








Ground Floor



First Floor


Approximate Gross Internal Area
1035 sq ft (96 sq m)

Disclaimer: Floorplan measurements are approximate and are for illustrative purposes only. While we do not doubt the floor plan accuracy and completeness, you or your advisors should conduct a careful, independent investigation of the property in respect of monetary valuation. copyright www.photohausgroup.co.uk





Nested Chelmsford

Fora, 9 Dallington Street, London - EC1V 0LN

01245 970045 • jack.gundry@nested.com • nested.com/chelmsford