



3 Allanbank Gardens is an immaculate and well-appointed five-bedroom detached family home situated in a much sought after residential development in the historic Borders Town of Lauder.

Commutable to Edinburgh via the A68, or by train from the station at Stow, that runs to Edinburgh, which is approximately six miles away, the property is also located in a strong primary and secondary school catchment.

Measuring 240 square metres/2583 square feet this flexible family home, lies across two levels and comprises five double bedrooms - one with walk in wardrobe, two ensuite shower rooms, a family bathroom, a sitting room with bay window and double doors leading to the dining room, a fabulous kitchen with breakfast bar, plus family area off, a study, a utility room and a downstairs wc. With excellent storage throughout, including fitted wardrobes to all bedrooms, the property also benefits from a feature real flame gas fire in the sitting room, gas central heating and double glazing. The spacious reception hall is a particular feature of this house which accesses all rooms, on the entire ground floor, and creates a real flow throughout this versatile and spacious family home.

Externally, the property has plentiful driveway parking to the front of the integral double garage, plus garden ground with a variety of shrubs and lawn offering an impressive frontage leading to the front door. A gate to the side leads to the large, enclosed south-facing garden at the rear which is mainly laid to lawn with some semi-mature trees and shrubs, plus a large, decked area which is accessed from the family area of the kitchen. Of particular note is the Hobbit House with power and lighting, which is also ideal for more informal entertaining, or for use as a childrens playhouse. The storage shed to the side provides excellent external storage.

Edinburgh is easily accessible via the A68, as are most Border towns. The Borders Railway, running from Tweedbank to Edinburgh, has a stop at Stow which is approximately six miles away, with the journey from Stow to Edinburgh Waverley being around forty-five minutes.

Edinburgh 27 miles. Earlston 7.5 miles. Stow 6.0 miles. Melrose 12.5 miles.

(All distances are approximate)

Location:

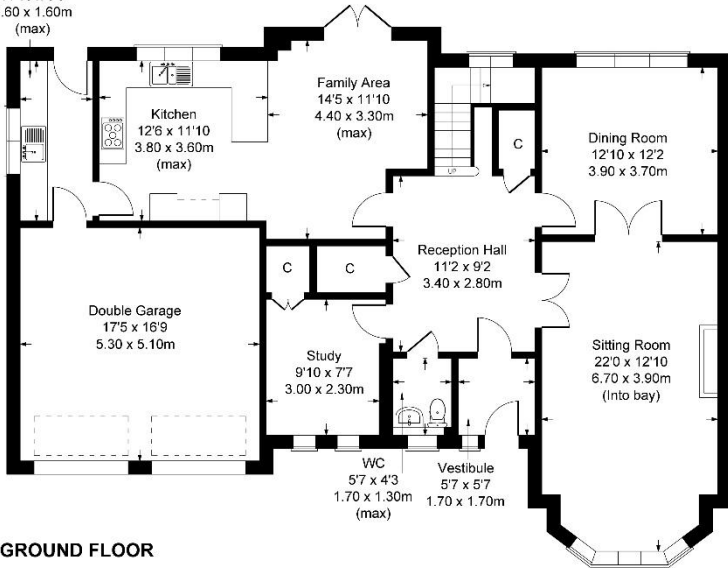
3 Allanbank Gardens is situated in a much sought-after residential development that is located in the ancient Borders town of Lauder, which is situated half-way between the Lammermuir Hills and the River Tweed, and is surrounded by beautiful rolling countryside. The town provides an extensive range of amenities ranging from a variety of specialist shops, small supermarket, coffee shop/art gallery, and a couple of well known hotels. The thriving old mill town of Galashiels sixteen miles to the South West offers a fuller range of shopping facilities, which include Tesco, ASDA, Next and Marks & Spencer.

Local tourist attractions include Thirlestane Castle on the southern side of Lauder, nearby Mellerstain House, and Abbotsford House on the outskirts of Melrose. There are also a variety of outdoor pursuits in the area that include fishing, horse riding, golf, mountain biking and a selection of walks that cross through the Scottish Borders. Local schools include the Lauder primary school, the highly regarded St Mary's preparatory school in Melrose, and Earlston High School. The Borders General Hospital lies just outside the town of Melrose which is only twelve and a half miles away, and Lauder sits in an easily accessible area with Edinburgh in easy reach via the A68, which also provides links to the north of England. The Borders Railway, running from Tweedbank to Edinburgh, has a stop at Stow which is approximately six miles away.

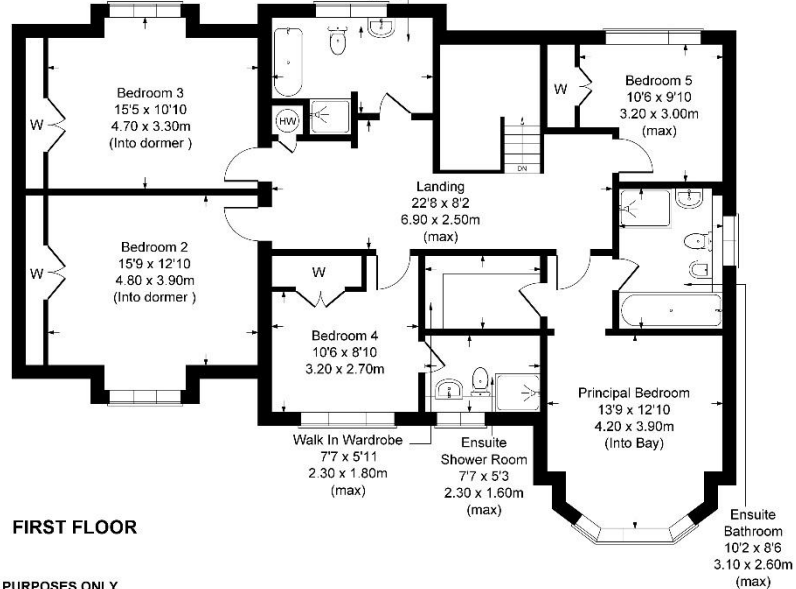


3 Allanbank Gardens, Lauder TD2 6AB

Utility Room
11'10 x 5'3
3.60 x 1.60m
(max)



Family Bathroom
10'6 x 6'7
3.20 x 2.00m
(max)



FOR ILLUSTRATIVE PURPOSES ONLY

Produced by Potterplans Ltd. 2026



Directions:

For those with satellite navigation the postcode for the property is: TD2 6AB
Coming from Edinburgh take the A68 South, passing through Pathhead, and enter Lauder. Pass the petrol station and continue for around three hundred yards, before taking the next available right turn onto the B6362, signposted Stow.
After about two hundred yards you will turn left into Allankbank Gardens. Proceed into the development and follow the road round. Number 3 is the third house along on the right, facing you.
From the South, follow the A68 through St. Boswells, Earlston and continue through Lauder until you reach the B6362 on your left, signposted Stow, and follow the above directions.

FURTHER INFORMATION:

Fixtures and Fittings:

Only items specifically mentioned in the particulars of sale are included in the sale.

Services:

Mains electricity, mains water, mains drainage, gas central heating, telephone and broadband

Outgoings:

Scottish Borders Council Tax Band Category: G

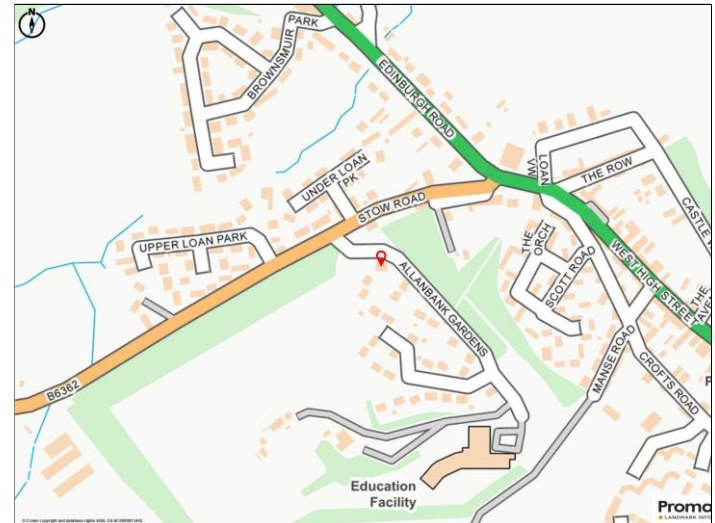
EPC Rating:

Current EPC: C80

Viewings:

Strictly by appointment with the selling agents.

Offers in Scottish legal form must be submitted by your solicitor to the selling agents. Interested parties are also advised to instruct their solicitor to note interest with the selling agents. In the event of a closing date being set the seller(s) shall not be bound to accept the highest offer or any offer and the seller reserves the right to accept any offer at any time. No responsibility can be accepted for expenses incurred in inspecting or visiting properties which have been sold or withdrawn.



Whilst these particulars have been carefully prepared and are believed to be correct, their accuracy cannot be guaranteed. They must not be relied upon as statements or representations of fact and shall not form part of any offer or contract thereon.

The text, photographs, plans or diagrams, within these particulars are for guidance only, and all areas, room measurements and distances are approximate.

Macpherson Property has not tested any services, equipment or facilities, and all intending purchasers must satisfy themselves, by inspection or otherwise, that the information given is correct, as no warrant is given or implied.



Macpherson Property
Tel: 01896 820 226

Email: enquiries@macphersonproperty.co.uk
Web: www.macphersonproperty.co.uk