



Waypoint

BRIXHAM



A landmark contemporary home set above the water's edge, commanding uninterrupted panoramic views across Tor Bay.

- Contemporary Coastal Home
- Panoramic Sea Views
- Five Double Bedrooms
- Double Garage & Parking
- Multiple Terraces & Balconies
- Low Maintenance & High Energy Efficiency

Positioned dramatically above the shoreline on Berry Head Road, this exceptional contemporary residence has been designed entirely around its relationship with the sea. From first light to sunset, the ever-changing coastal panorama becomes part of daily life, an uninterrupted sweep of water, sky and horizon.

Constructed as a bespoke architectural statement, Waypoint unfolds across three carefully considered levels, each orientated to maximise light, privacy and the extraordinary coastal outlook. Clean modern lines, extensive glazing and curved architectural detailing create a home that feels both striking and calming, a rare balance of design and liveability. The result is a home of genuine presence, yet one that remains effortlessly comfortable and highly functional for modern living.

There are very few homes that truly engage with their setting, Waypoint is one of them.







The principal living accommodation is nothing short of spectacular. A curved wall of floor-to-ceiling glazing forms a dramatic focal point, framing uninterrupted views across the bay and flooding the space with natural light throughout the day. Sliding doors open directly onto a glass balustraded terrace, creating a seamless connection between inside and out. Above, a remarkable panoramic room sits beneath a roof lantern, offering a 180-degree outlook across the harbour, coastline and open sea. Whether used as a formal sitting room, entertaining space or quiet retreat, it is a room that defines the house.

The kitchen is both elegant and highly practical, designed for entertaining on any scale. A large open plan kitchen and dining space features sleek cabinetry, stone worktops and integrated appliances, all arranged to maintain a constant visual connection to the water.

Bi-fold doors open onto the sun terrace, allowing the space to extend naturally outdoors during the warmer months. The sound of the sea and the movement of boats in the harbour provide a constant, calming backdrop. A separate utility room offers excellent secondary space, including a practical shower area ideal after time spent on the water or beach.

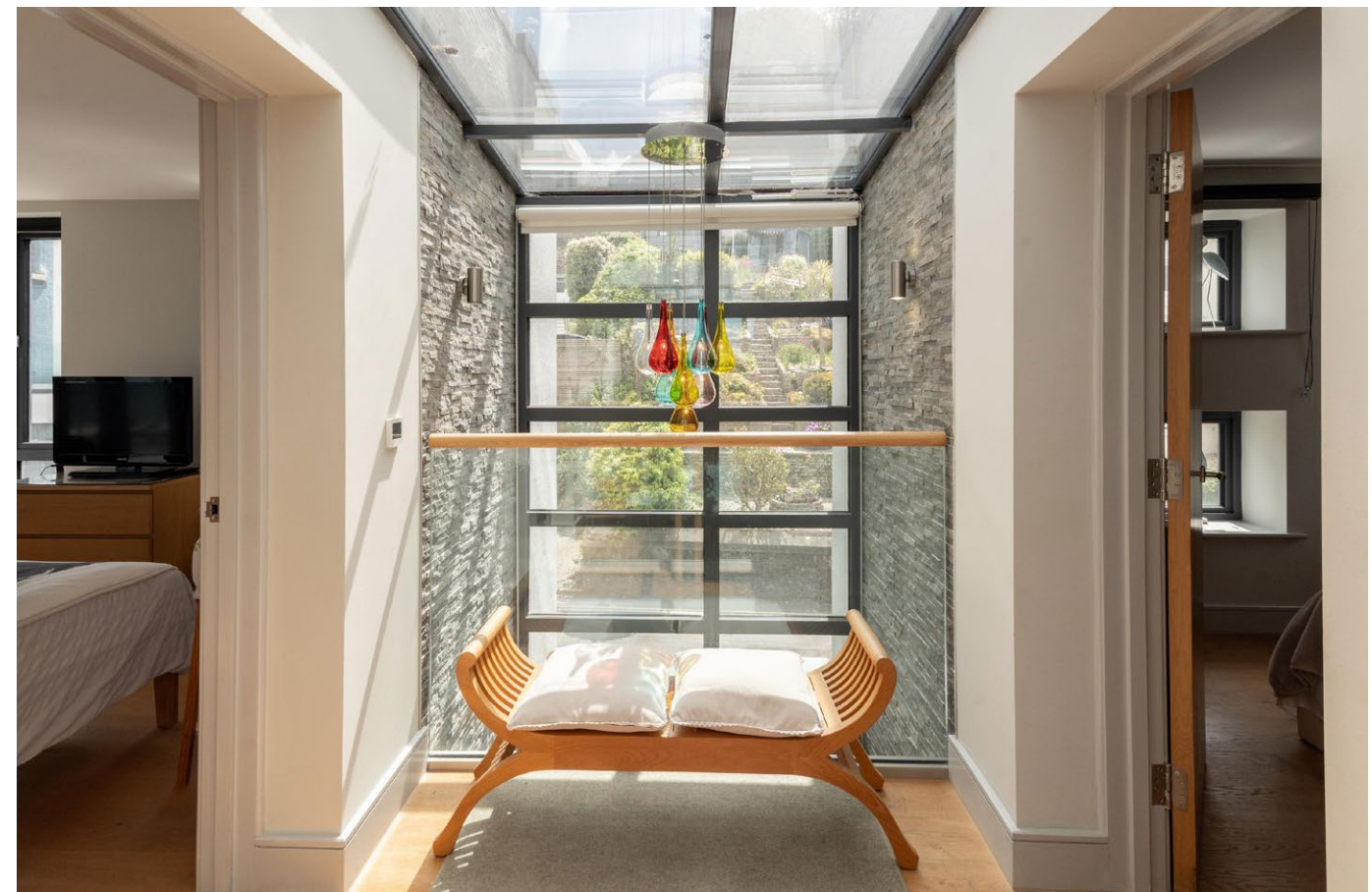






The house provides five generous double bedrooms, arranged to offer flexibility for both family living and guests. The principal suite is particularly impressive, enjoying direct sea views, a dressing area and a well-appointed en suite. Waking here feels entirely unique, with the sunrise unfolding across the water beyond. Three of the bedrooms benefit from en suite or adjacent bath and shower facilities, all finished in a clean, contemporary style. Each room has been designed to capture either coastal views or excellent natural light.

Externally, the house continues to impress. A series of terraces and balconies wrap around the property, all carefully positioned to make the most of the panoramic setting. Glass balustrades ensure uninterrupted sightlines, while composite decking provides a clean, low-maintenance finish. A particularly private lower terrace sits just above the waterline, a sheltered and atmospheric space for entertaining or relaxing. To the front, a driveway provides access to a double garage with an electric door, power and internal access.

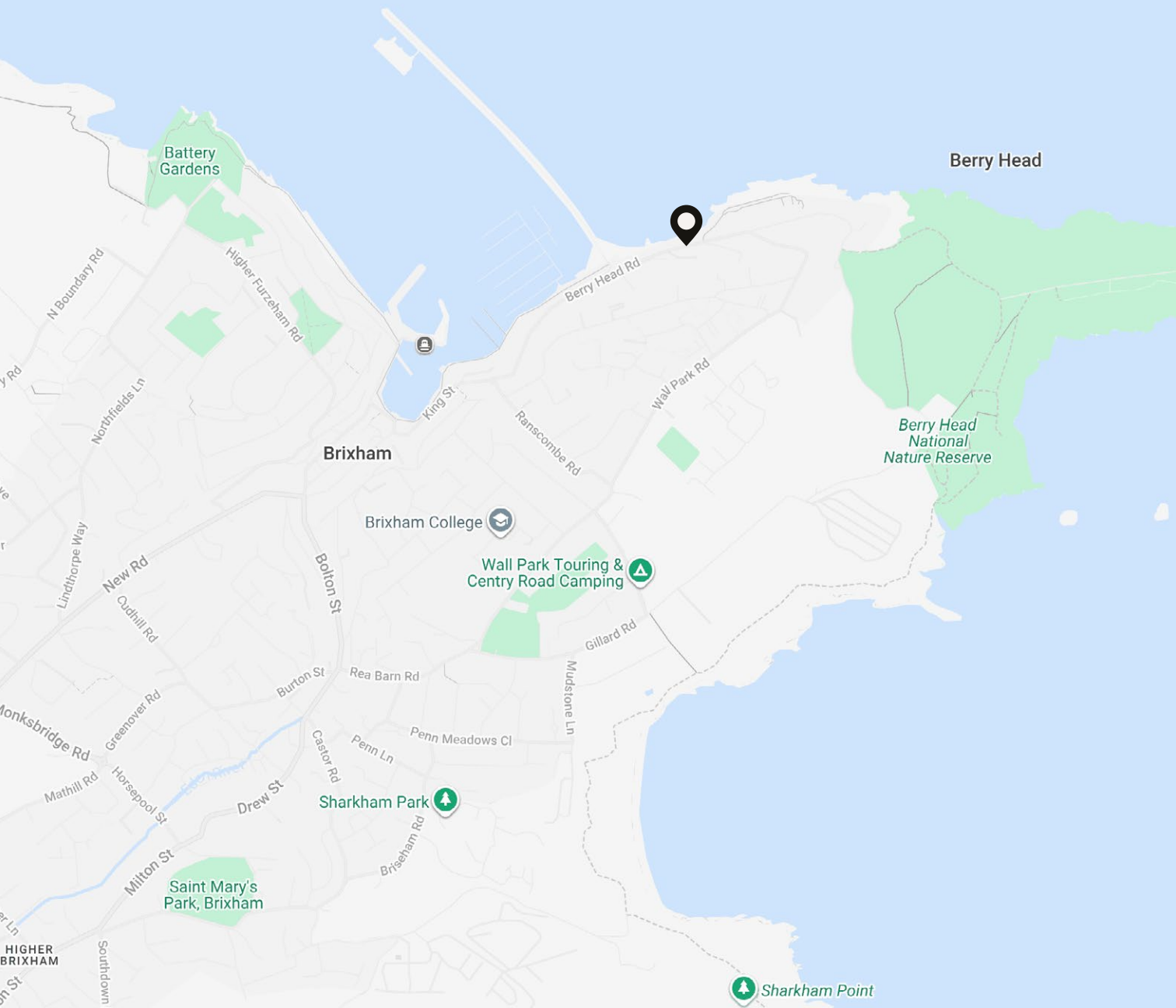






Brixham remains one of South Devon's most authentic coastal towns, a working fishing port with a rich maritime heritage. The harbour is vibrant year-round, with one of the UK's largest fishing fleets and a thriving marina. Excellent restaurants, waterside cafés and independent shops line the waterfront.

The South West Coast Path and Berry Head Nature Reserve are moments away, offering some of the most dramatic walks in the region, while nearby coves and beaches provide easy access to the water. Despite its peaceful setting, the property is well-connected, with Totnes, Exeter, and Plymouth all within comfortable reach.



Floor Plan

Approximate Gross Internal Area
3,218 sq ft / 299 sq m



Important notice: Movelli give notice that: all text, photographs and plans on these brochure are for guidance only and are not necessarily comprehensive; any areas, measurements or distances given are approximate; these details do not constitute part of an offer or contract and must not be relied upon as statements or representations of fact; it should not be assumed that the property has all the necessary planning permissions and building regulations approvals; we are not authorised to give any representations or warranties in relation to this property whatsoever; potential purchasers must satisfy themselves as to the correctness of all details by inspection or otherwise. Alpinum Limited T/A Movelli, 21 Ellis St, London, SW1X 9AL, UK Tel: 020 3150 0733 Email: hello@movelli.com



Jonathan Mowday

For viewings, further information
or a free property valuation contact:

☎ 07395 811 712 | 01392 539 805

✉ jonathan@moveli.co.uk

M  **VELI**