



PINCOTT PLACE, SE4

£250,000

One bedroom apartment

16' Lounge

Gated development

Allocated parking

Extended lease

Energy rating: C



ABOUT THE PROPERTY

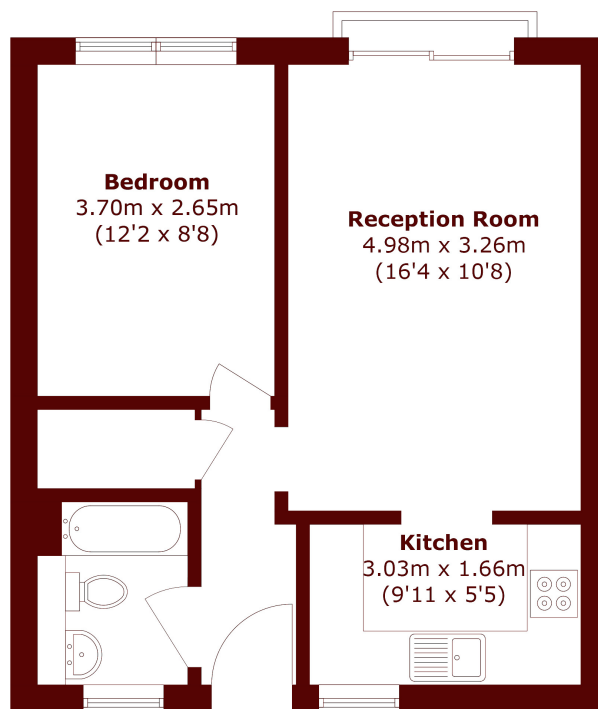
Set to the first floor of a low rise modern purpose built building, this one bedroom modern apartment is found in a popular mews style, secure gated development with allocated parking.

The well laid out home features a bright 16' lounge with attractive views across playing fields.

The busy commuter will find the closest stations are Brockley Overground and Nunhead.



STEP INSIDE PINCOTT PLACE



Total area (approx.): 42.0 sq. m (452.0 sq. ft)

Brockley
020 8629 8164

Energy Rating: C We aim to make our particulars both accurate and reliable. However, they are not guaranteed; nor do they form part of an offer or contract. If you require clarification on any points then please contact us, especially if you're traveling some distance to view. Please note that appliances and heating systems have not been tested and therefore no warranties can be given as to their good working order

**MARSH &
PARSONS**