

£215,000

Located in the Lakes Estate is this three-bedroom semi-detached family home offered with NO CHAIN. The property comprises of lounge, kitchen, downstairs W.C and upstairs bathroom. Externally you have both front and rear gardens.

Property Description

ENTRANCE PORCH

UPVC door to hall

ENTRANCE HALL

Door to lounge and kitchen, downstairs cloakroom. Storage cupboard, stairs to first floor. Radiator

CLOAKROOM

Low level w.c, half wooden cladded walls

LOUNGE

Double glazed window, double glazed door to garden. Radiator

KITCHEN / DINER

Double glazed window to front aspect, wall mounted boiler, wall mounted and base units, rolled edge work surface areas, space for fridge freezer, cooker and extractor fan, washing machine; tiled walls and floor.

LANDING

Two storage cupboards, dado rail, doors to bedrooms 1 -3 and family bathroom

BEDROOM ONE

Double glazed windows to front aspect, radiator and storage cupboard

BEDROOM TWO

Double glazed window to rear aspect, radiator

BEDROOM THREE

Double glazed window to rear aspect, radiator

BATHROOM

Double glazed frosted window to front aspect, radiator, basin and low level w.c. Bath and shower attachment, storage cupboard.

FRONT GARDEN

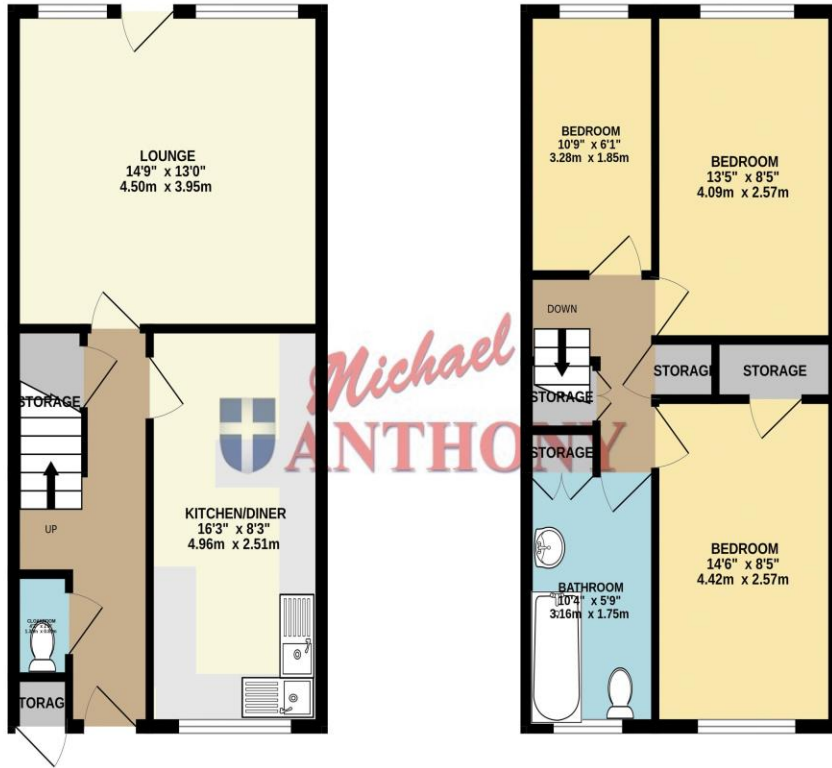
Mainly laid to lawn, path to front door, picket fence

REAR GARDEN

Mainly laid to lawn, patio area, enclosed by timber fence

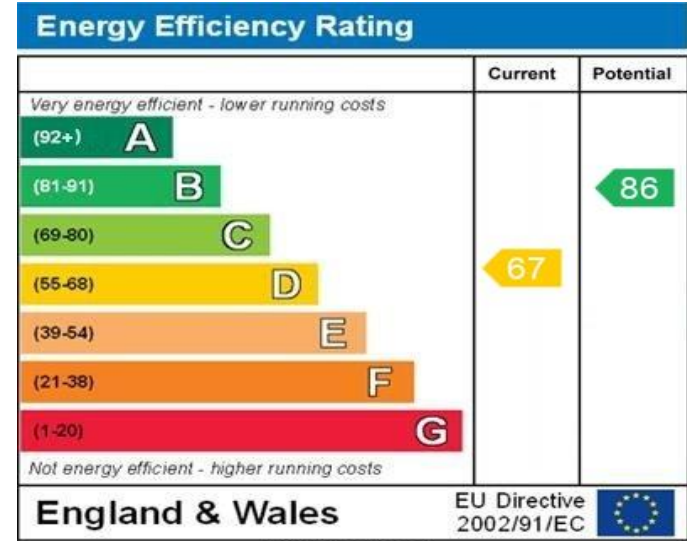
GROUND FLOOR
432 sq.ft. (40.1 sq.m.) approx.

1ST FLOOR
432 sq.ft. (40.1 sq.m.) approx.



TOTAL FLOOR AREA: 863 sq.ft. (80.2 sq.m.) approx.

Whilst every attempt has been made to ensure the accuracy of the floorplan contained here, measurements of doors, windows, rooms and any other items are approximate and no responsibility is taken for any error, omission or mis-statement. This plan is for illustrative purposes only and should be used as such by any prospective purchaser. The services, systems and appliances shown have not been tested and no guarantee as to their operability or efficiency can be given.
Made with Metropix ©2025



WWW.EPC4U.COM

MONEY LAUNDERING REGULATIONS 2017 intending purchasers will be asked to produce identification and proof of financial status when an offer is received. We would ask for your co-operation in order that there will be no delay in agreeing the sale.

THE CONSUMER PROTECTION REGULATIONS 2008 The Agent has not tested any apparatus, equipment, fixtures and fittings or services and so cannot verify that they are in working order or fit for the purpose. A Buyer is advised to obtain verification from their Solicitor or Surveyor. References to the Tenure of a Property are based on information supplied by the Seller. The Agent has not had sight of the title documents. A Buyer is advised to obtain verification from their Solicitor. You are advised to check the availability of this property before travelling any distance to view. We have taken every precaution to ensure that these details are accurate and not misleading. If there is any point which is of particular importance to you, please contact us and we will provide any information you require. This is advisable, particularly if you intend to travel some distance to view the property. The mention of any appliances and services within these details does not imply that they are in full and efficient working order. These particulars are in draft form awaiting Vendors confirmation of their accuracy. These details must therefore be taken as a guide only and approved details should be requested from the agents

190 Queensway Bletchley Milton Keynes MK2 2ST
01908 648 666 | bletchley@maea.co.uk