



27 Irons Road
Northampton, NN5 6WL



Derran Dooley
Partnered With
Simpsons
Property Experts



Exceptional Four-Bedroom Detached Family Home with Views Towards Harlestone Firs

** GUIDE PRICE £425,000 - £440,000 **

Constructed by David Wilson Homes and beautifully maintained by the current owners since new, this impressive four-bedroom detached family home offers just under 1300 sq ft of thoughtfully designed living space in a fantastic position overlooking Harlestone Firs.

At the heart of the home is the spacious kitchen/dining room, complete with integrated appliances and complemented by a separate utility room. French doors open onto the landscaped rear garden, creating the perfect setting for entertaining, family gatherings or simply enjoying the outdoors.

The landscaped rear garden is a real highlight, enjoying an open outlook towards Harlestone Firs across the road. A covered seating area provides the ideal place to relax, while the garden itself is a genuine sun trap throughout the day.

To the front of the property is a bright and welcoming sitting room, while upstairs you'll find four genuinely generous bedrooms—a rarity in many modern family homes. There are no box rooms here, with every bedroom offering comfortable proportions, making them ideal for growing families, guests or those needing space to work from home. The principal bedroom also benefits from fitted wardrobes and a stylish en-suite shower room, with the remaining bedrooms served by a contemporary family bathroom.

With Harlestone Firs just moments from your front door, scenic woodland walks are always within easy reach, making this a fantastic location for families, dog owners and anyone who enjoys spending time outdoors. Combining quality David Wilson construction, spacious accommodation throughout and an excellent setting, this is a home ready for its next family to enjoy.



4

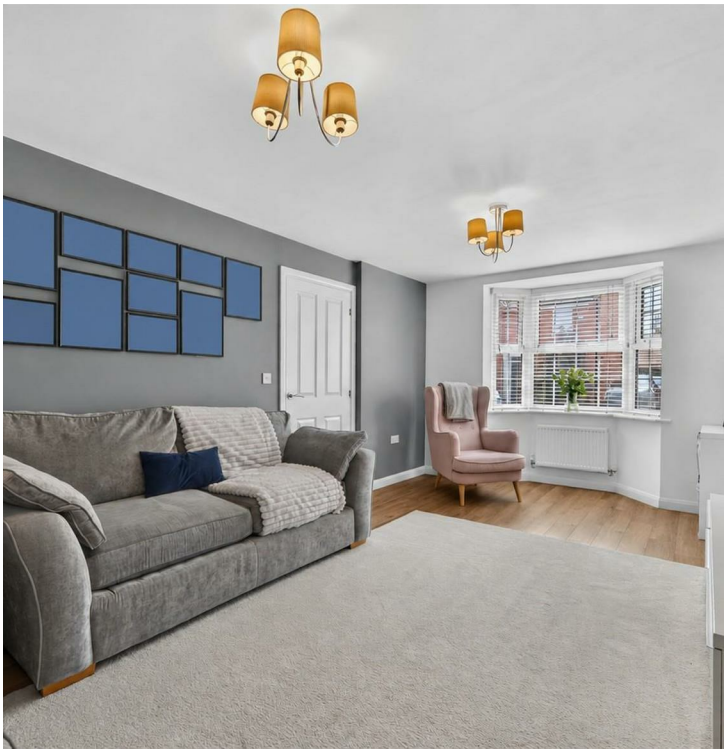


2



2

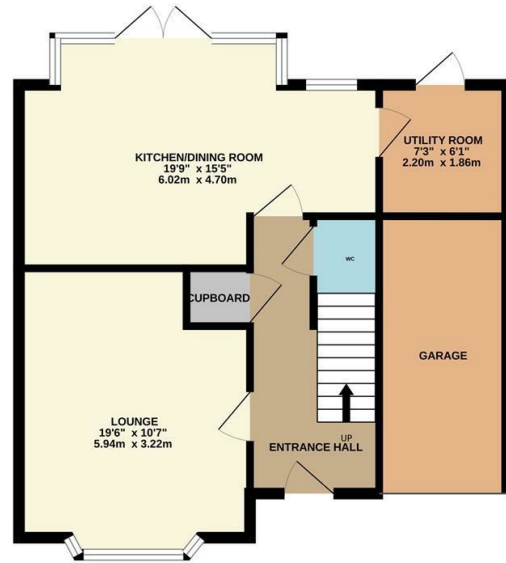
Guide price £425,000



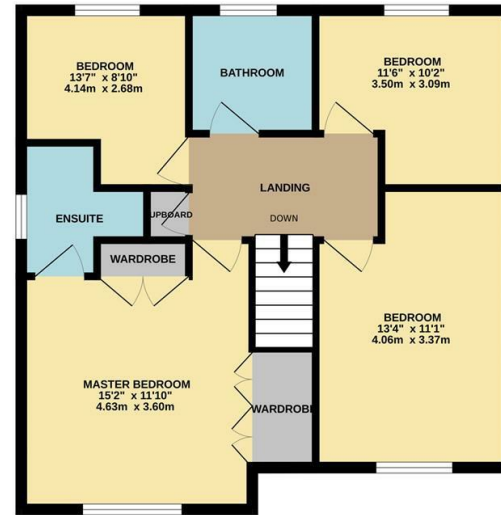
Located in a fantastic position on the western edge of Northampton, this home enjoys Harlestone Firs just moments away, offering miles of beautiful woodland walks, cycling routes and open green space right on your doorstep. The area is also well served by a choice of highly regarded primary and secondary schools, making it ideal for families. For those commuting, both M1 Junctions 15 and 15A are easily accessible, providing excellent road links to Milton Keynes, Rugby, Birmingham and London.



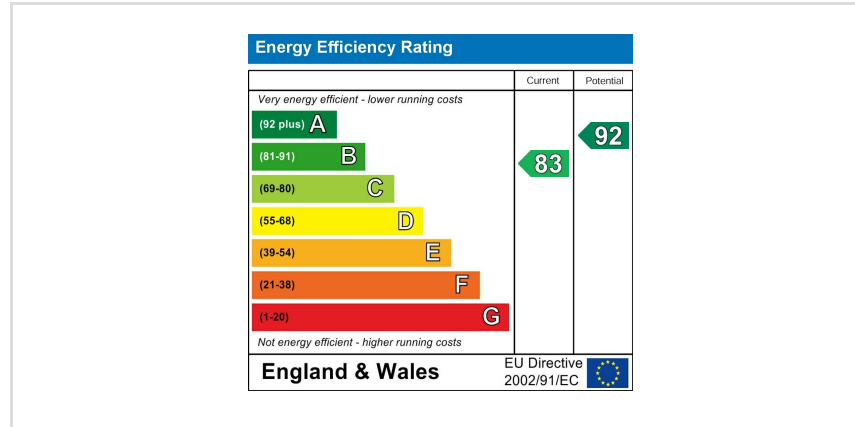
GROUND FLOOR



1ST FLOOR



Whilst every attempt has been made to ensure the accuracy of the floor plan contained here, measurements of doors, windows, rooms and any other items are approximate and no responsibility is taken for any error, omission, or mis-statement. The plan is copyright to Simpson and Partners and is for illustrative purposes and should only be used as such by any prospective purchaser. The services, systems and appliances shown have not been tested and no guarantee as to their operability can be given.
Made with Metropix ©2026



You may download, store and use the material for your own personal use and research. You may not republish, retransmit, redistribute or otherwise make the material available to any party or make the same available on any website, online service or bulletin board of your own or of any other party or make the same available in hard copy or in any other media without the website owner's express prior written consent. The website owner's copyright must remain on all reproductions of material taken from this website.



Derran Dooley
Partnered With

Simpsons
Property Experts

Tel: 01604 969706

Email: northampton@simpsonspropertyexperts.co.uk

Web: simpsonspropertyexperts.co.uk/our-locations/northampton

