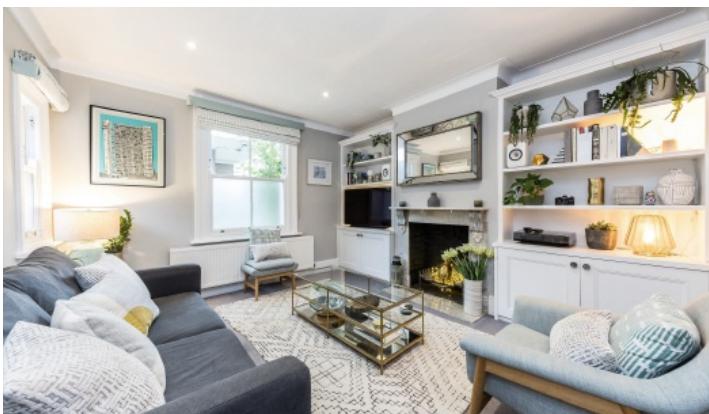


# FLETCHERS

ESTATE AGENTS



## St. Peters Grove, W6

£975,000

A wonderful Victorian Cottage in the heart of St. Peters Conservation Area. With an open plan kitchen and modernised throughout whilst keeping period features maintained.

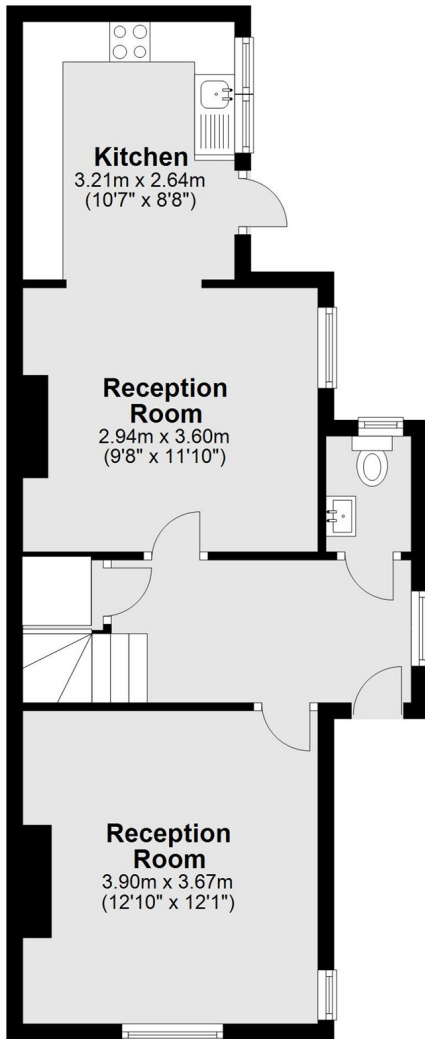
St. Peter's Grove is excellently located for the local amenities of the conservation area itself with many excellent pubs and restaurants nearby. The Carpenters Arms is known locally for its excellent food and selection of craft beers. The house is also within catchment of some outstanding local schools. The Thames Path is under a mile away as are the restaurants, shops & boutiques of Chiswick High Road and King Street. The green space of the popular St. Peters Square is just one street away.

- Separate Reception/Kitchen • Two Double Bedrooms • West-Facing Garden • No Onward Chain • Fully modernised • Nearby local amenities •

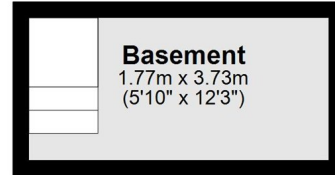
# FLETCHERS

ESTATE AGENTS

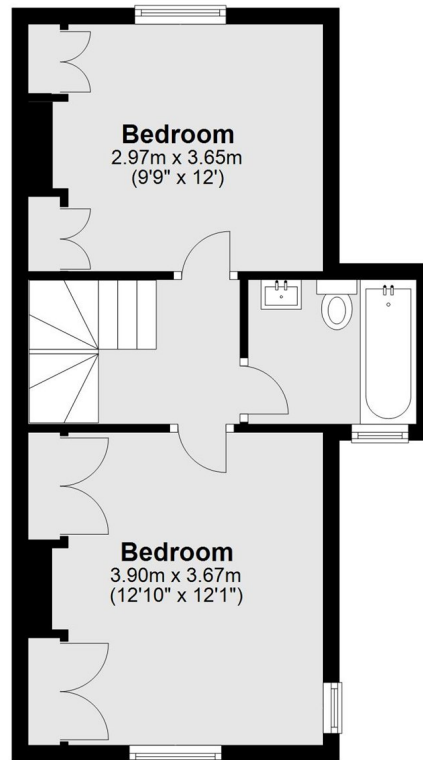
## Ground Floor



## Basement



## First Floor



Main area: Approx. 81.4 sq. metres (875.7 sq. feet)  
Plus basement, approx. 6.6 sq. metres (71.1 sq. feet)

Fletchers Brook Green Sales  
144 Shepherds Bush Road, Hammersmith, London, W6 7PB  
020 7603 1415  
[brookgreensales@fletcherestates.com](mailto:brookgreensales@fletcherestates.com)

Energy Rating: E. We aim to make our particulars both accurate and reliable. However they are not guaranteed; nor do they form part of an offer or contract. If you require clarification on any points then please contact us, especially if you're traveling some distance to view. Please note that appliances and heating systems have not been tested and therefore no warranties can be given as to their good working order.