

Colin Dean Residential

in partnership with Dexters



Sheepcote Road, HA1

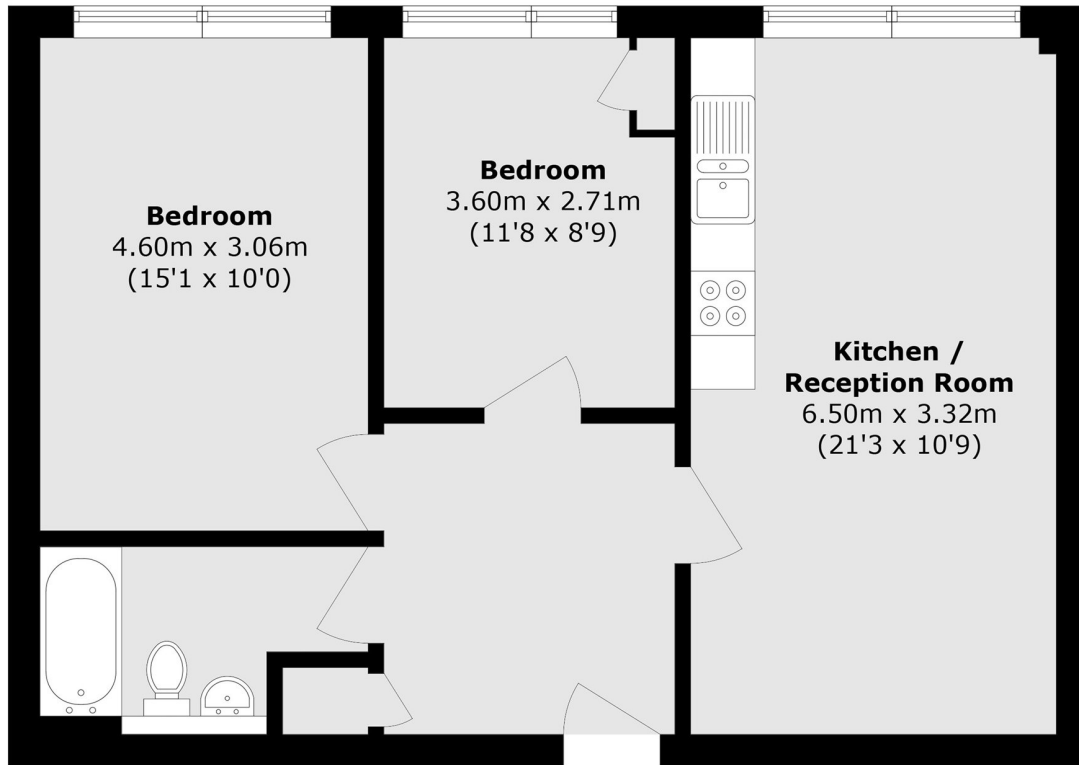
£1,695 pcm

This well-presented two-bedroom, ground floor apartment is located in a quiet residential area with allocated parking. The property offers two generously sized double bedrooms, a bright and airy open-plan reception room, and a modern kitchen with fitted appliances. This home is ideal for a professional couple or small family seeking extra space and comfort. Energy Rating: C.

- Ground Floor Apartment • Two Double Bedrooms • Spacious Living Room •
- Open-plan Kitchen • Allocated Parking Space • Central location •

Colin Dean Residential

in partnership with Dexters



Total area (approx.): 61.6 sq. m (663.1 sq. ft)

Colin Dean Residential
350 Pinner Road,
Harrow, HA1 4LB
020 8515 7929
daniel.murray@colindean.com

Energy Rating: C We aim to make our particulars both accurate and reliable. However they are not guaranteed; nor do they form part of an offer or contract. If you require clarification on any points then please contact us, especially if you're travelling some distance to view. Please note that appliances and heating systems have not been tested and therefore no warranties can be given as to their good working order.