

## Pearson Square, W1T

£1,730 Per week

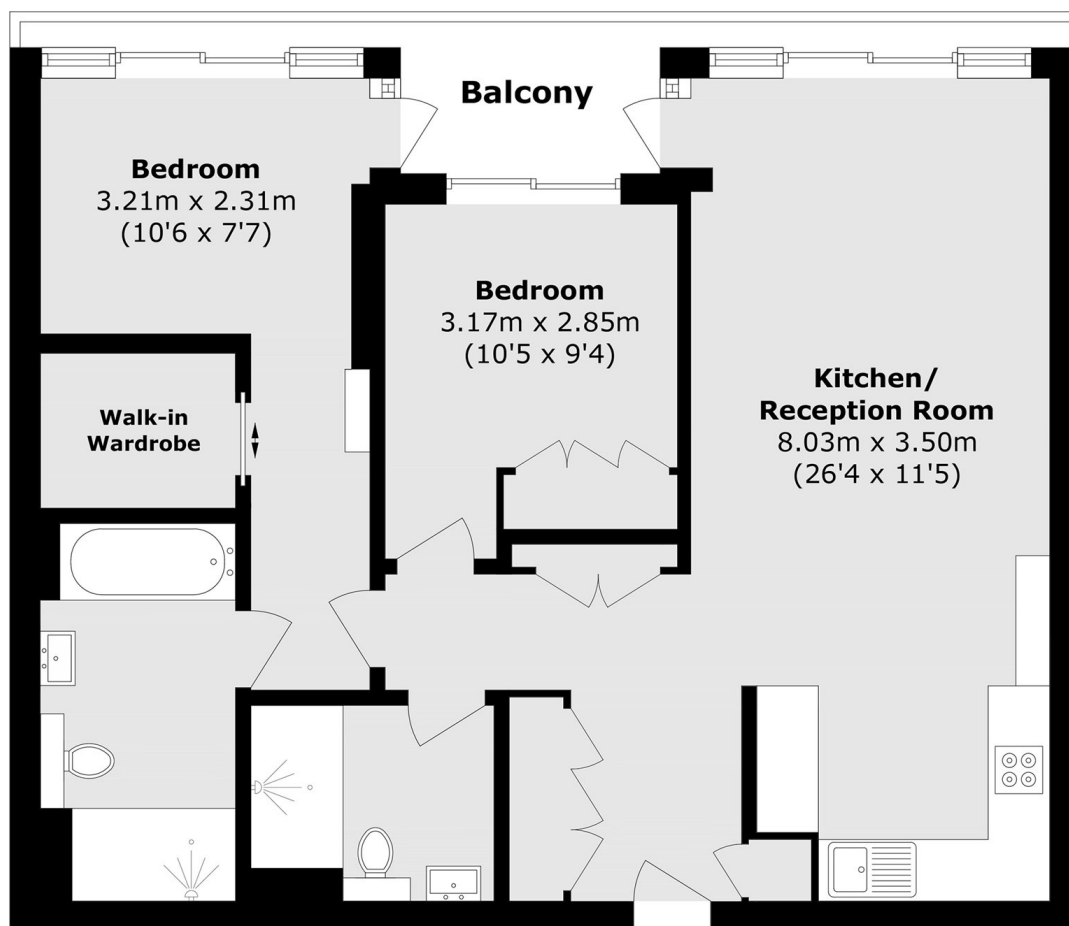
A luxurious two double bedroom, two bathroom apartment on the third floor of this highly acclaimed and sought after luxury development, with 24 hour concierge, cinema and spa facilities, in the heart of Fitzrovia.

Pearson Square is located in the heart of Fitzrovia with all its local amenities just moments away. Goodge Street, Great Portland Street and Oxford Circus Stations are all a short walk away.

### Features

- Two Double Bedrooms
- Two Bathrooms
- Private Terrace
- 24 Hour Concierge
- Gym And Spa
- Third Floor

# Pearson Square, London, W1T



## Third Floor

Total area (approx.): 75.1 sq. m (808.3 sq. ft)

Balcony area (approx.): 6.7 sq. m (72.1 sq. ft)