



FULHAM PALACE ROAD, SW6

£725,000

Three double bedrooms
Vaulted reception room
Bishops Park
Good condition throughout
Excellent transport links
Close to the river and parks

@marshandparsons
marshandparsons.co.uk

MARSH &
PARSONS



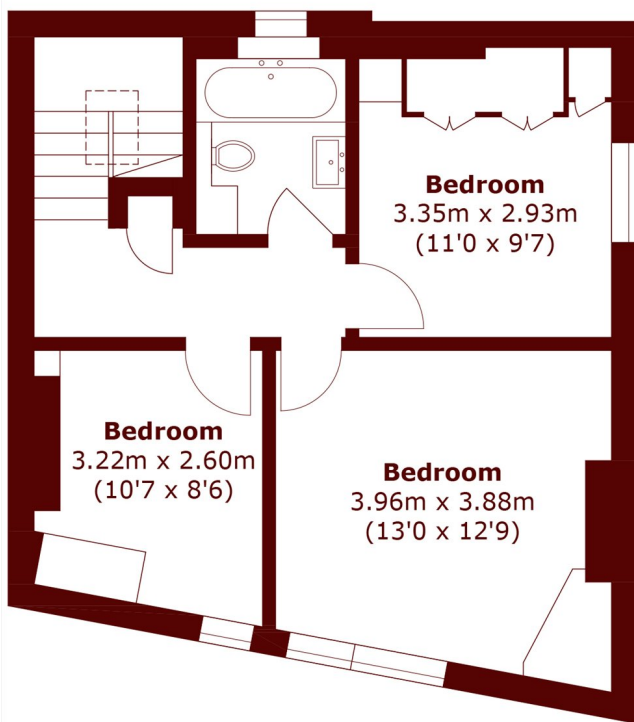
ABOUT THE PROPERTY

Occupying the upper two floors of a Victorian building, this wonderful three bedroom apartment offers bright and spacious living.

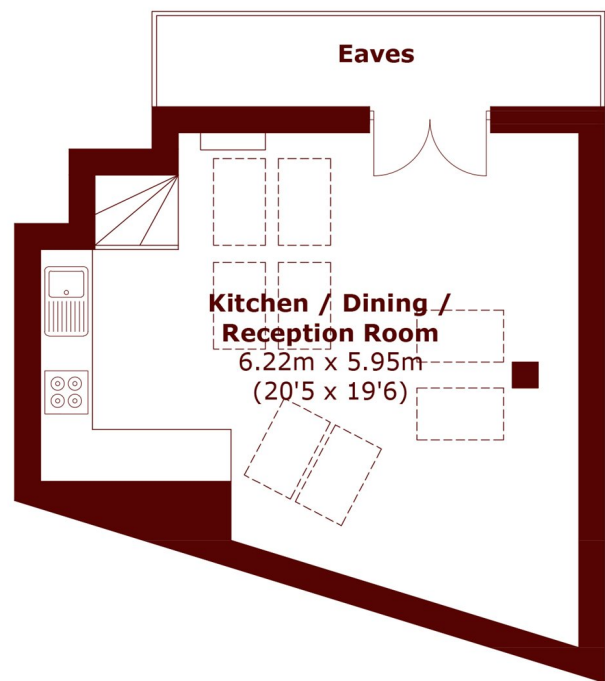
Fulham Palace Road runs parallel to the Thames with its independent cafes and shops. Putney Bridge (District Line, Zone 2, 0.8 miles) is the nearest tube station and Hammersmith (District, Piccadilly, Hammersmith & City Lines, 1.2 miles). Buses also run towards Chelsea, Putney and central London and the property is conveniently located for Bishops Park, Fulham Palace and the Thames tow path.



STEP INSIDE FULHAM PALACE ROAD



Second Floor



Third Floor

Total area (approx.): 75.8 sq. m (815.9 sq. ft)
(Excluding Eaves)

Bishops Park
020 7993 9888

Energy Rating: C We aim to make our particulars both accurate and reliable. However, they are not guaranteed; nor do they form part of an offer or contract. If you require clarification on any points then please contact us, especially if you're traveling some distance to view. Please note that appliances and heating systems have not been tested and therefore no warranties can be given as to their good working order

**MARSH &
PARSONS**