



Drakefield Road, SW17

£1,800 Per calendar month

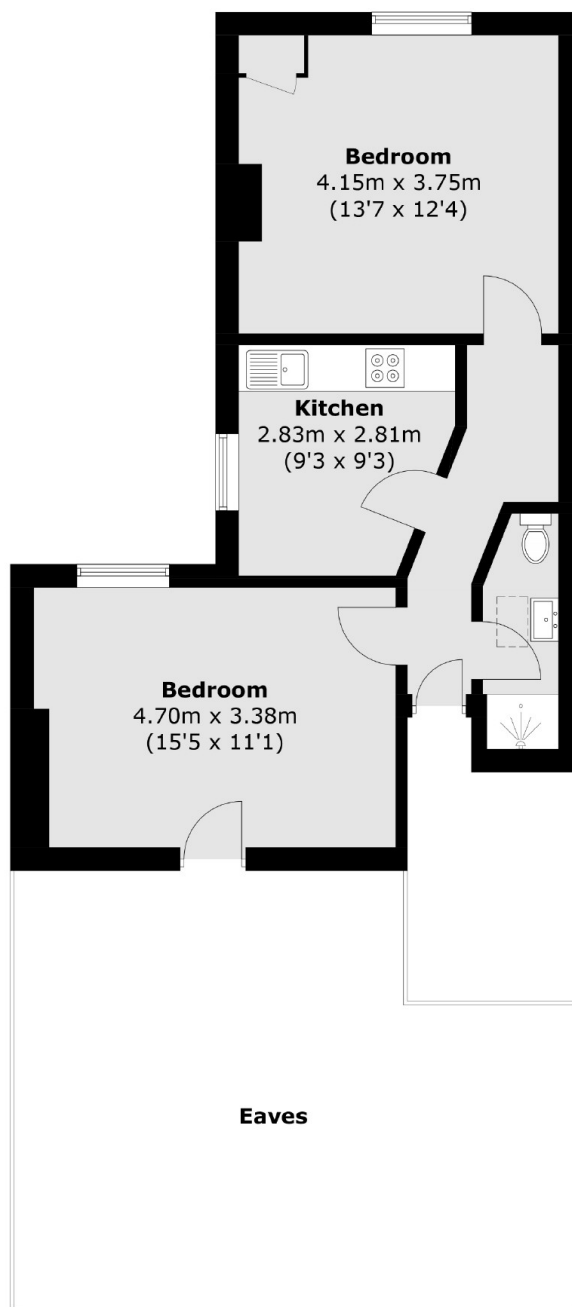
Located on the top floor of a Victorian conversion, this one bedroom flat comes with a large reception room, separate kitchen, shower room and storage space within the eaves.

Drakefield Road is a residential street in the heart of the Heaver Estate with a vast array of boutiques, bars and restaurants of Balham on the doorstep. Excellent transport links at Tooting Bec and Balham are also a stone throw away.

Features

- Top Floor Flat
- One Double Bedroom
- Large Reception Room
- Separate Kitchen
- Shower Room
- Ideal Location

Drakefield Road, London, SW17



Total area (approx.): 49.5 sq. m (532.8 sq. ft)
(Excluding Eaves)