



the  
**ANDERSON**  
Group exp

# Rhyd-y-Fenni, Crofty, Gower, Swansea, SA4 3SA

Offers Over £220,000

🛏️ 3 🚿 1 🚗 2



- Well-Presented Three Bedroom Semi-Detached Home
- Open Plan Lounge/Diner
- Quiet Cul-de-Sac Location
- Ideal for First Time Buyers or Family
- Good School Catchments
- Offered With No Onward Chain
- Private Rear Garden & Off-Road Parking
- Stunning Views Over The Estuary
- Close to Amenities in Nearby Crofty and Penclawdd
- Please Quote JH001 when Enquiring

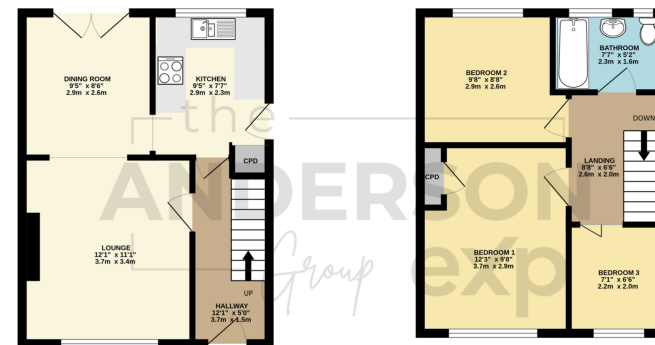




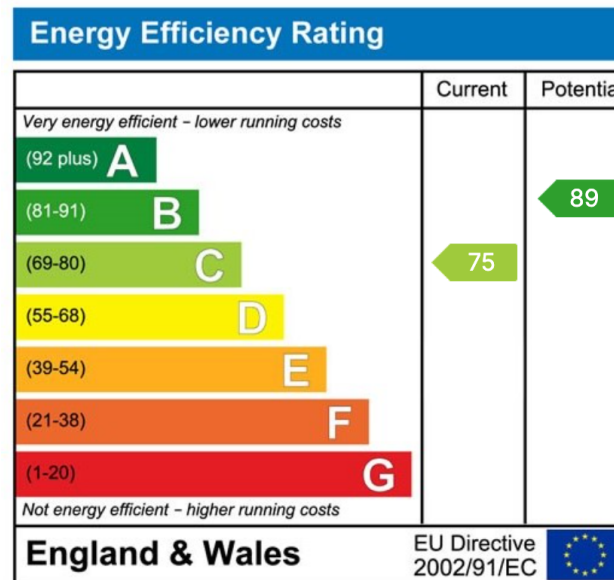
Offered with no onward chain is this well-presented three-bedroom semi-detached home located in a peaceful cul-de-sac in Crofty. The property briefly comprises entrance hall, lounge, dining room and kitchen on the ground floor, with three bedrooms and a family bathroom on the first floor. Benefitting from estuary views and off-road parking. Viewing comes highly recommended.

GROUND FLOOR  
342 sq.ft. (31.8 sq.m.) approx.

1ST FLOOR  
338 sq.ft. (31.4 sq.m.) approx.



TOTAL FLOOR AREA: 680 sq.ft. (63.2 sq.m.) approx.  
While every attempt has been made to ensure the accuracy of the figures contained here, measurements of doors, windows, rooms and any other items are approximate and no responsibility is taken for any error, omission or mis-statement. This plan is for illustrative purposes only and should be used as such to any prospective purchaser. The services, systems and appliances shown here are not been tested and no guarantee as to their condition or efficiency can be given.  
Made with Metropac (2020)



01792 805075

Swansea, Mumbles & Cower

sales@melanieanderson.co.uk