



Gibbs Close , Coventry, CV2 2BS Offers over £235,000

* Charming three-bedroom mid-terrace house * Located on Gibbs Close in Coventry. This property is in good condition, making it an excellent choice for families or individuals seeking a comfortable home. The property is in close proximity to UHCW and great Primary School Walsgrave Primary.

The house boasts gas central heating, ensuring warmth and comfort throughout the colder months, while the double-glazed windows provide added insulation and noise reduction, enhancing the overall living experience.

Situated in an ideal location, this property offers convenient access to local amenities, schools, and transport links, making it a practical choice for those who value both comfort and accessibility.

This mid-terrace house presents a wonderful opportunity for anyone looking to settle in a welcoming community. With its appealing features and prime location, it is sure to attract interest. We invite you to consider this property as your next home.

- Three Bedroom
- Garage
- Kitchen Diner
- Sought After Location

Viewing

Please contact our Evans Estates Office on 02476333363 if you wish to arrange a viewing appointment for this property or require further information.



3



1

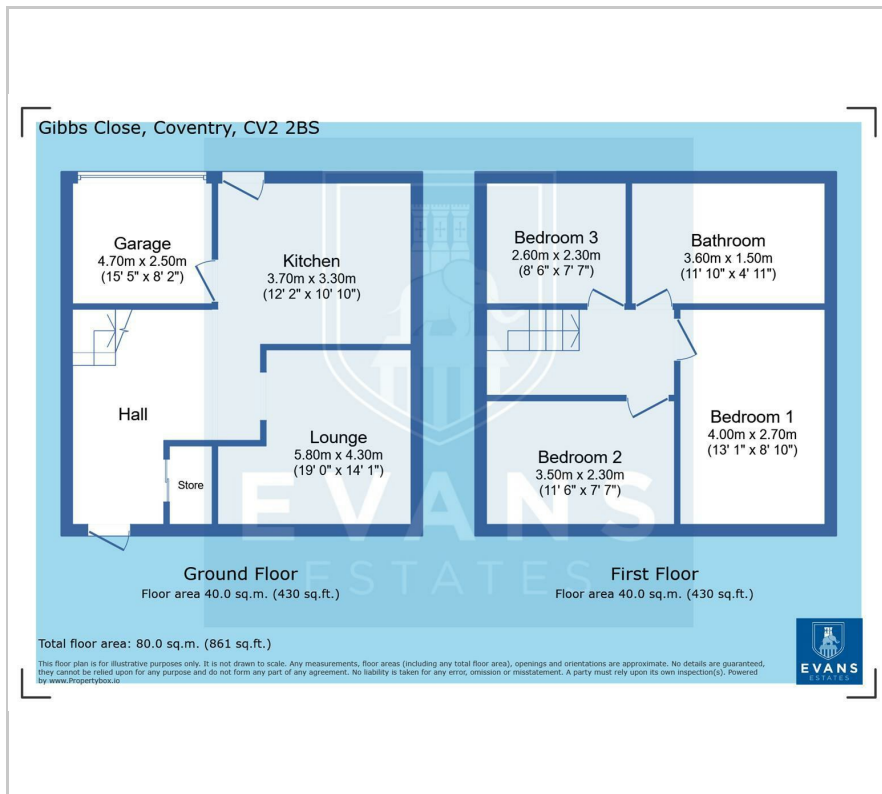


1



D

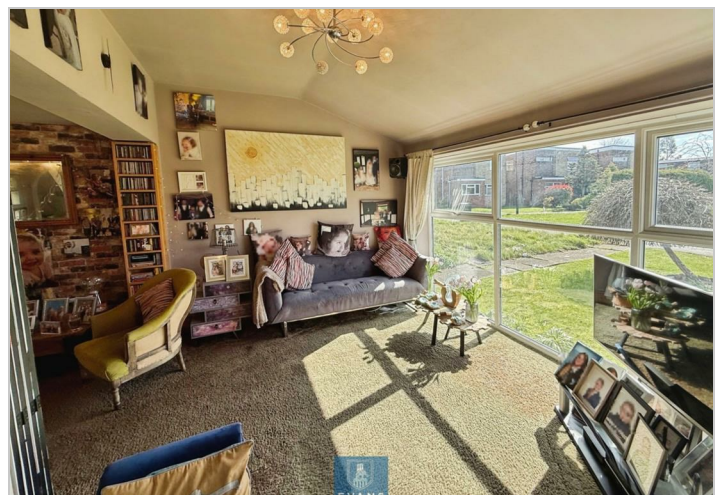
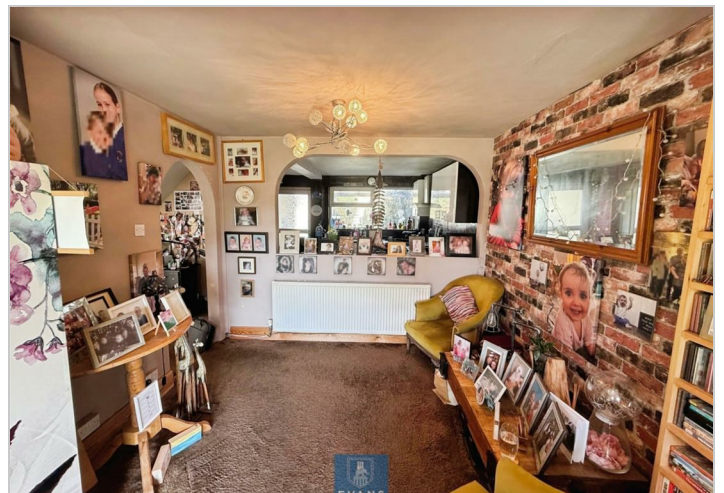
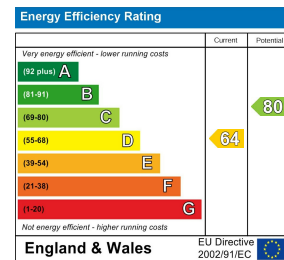
Floor Plan



Area Map



Energy Efficiency Graph



These particulars, whilst believed to be accurate are set out as a general outline only for guidance and do not constitute any part of an offer or contract. Intending purchasers should not rely on them as statements of representation of fact, but must satisfy themselves by inspection or otherwise as to their accuracy. No person in this firm's employment has the authority to make or give any representation or warranty in respect of the property.

47 Headington Avenue, Coventry, West Midlands, CV6 2GX

Tel: 02476333363 Email: info@evans-estates.co.uk <https://www.evans-estates.co.uk>