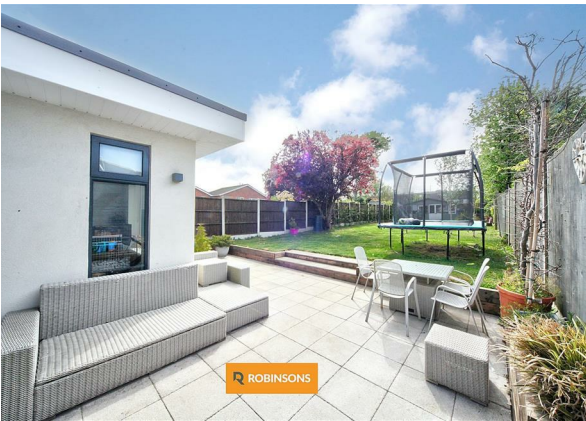
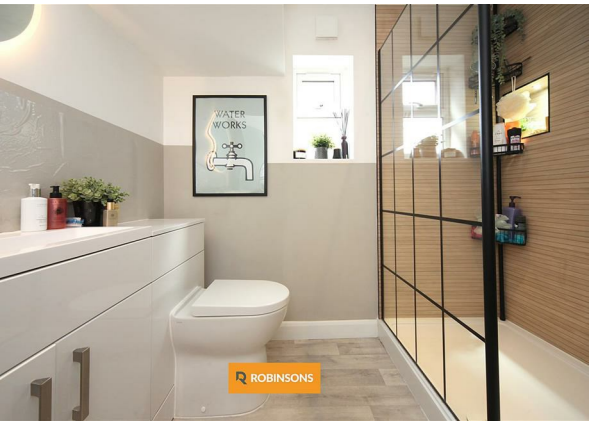
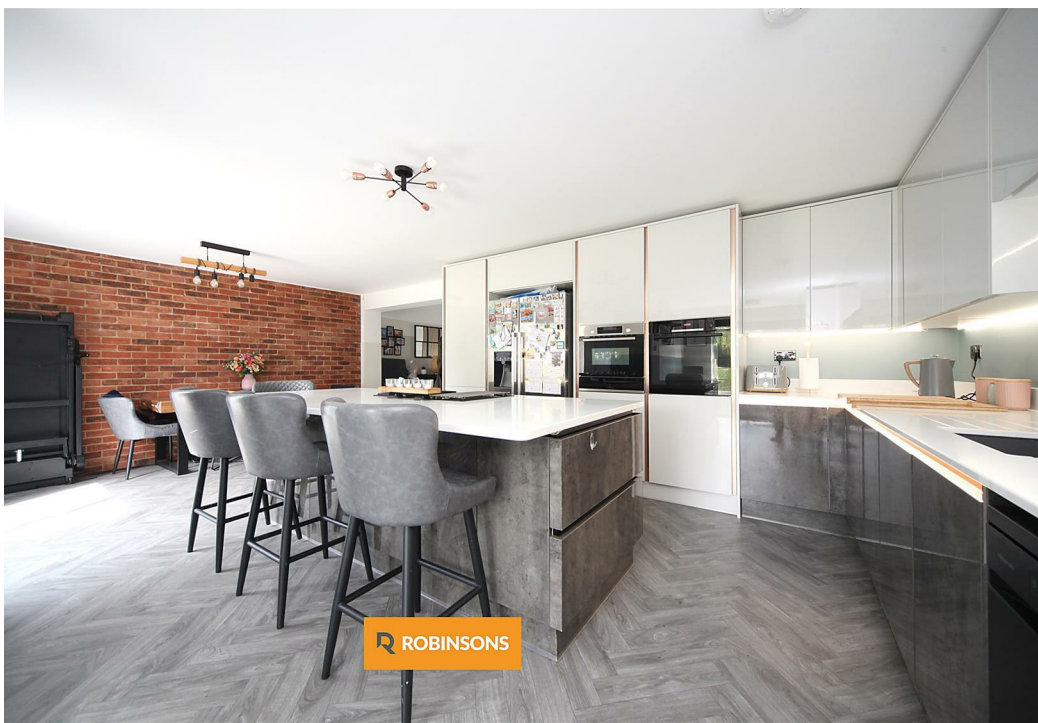
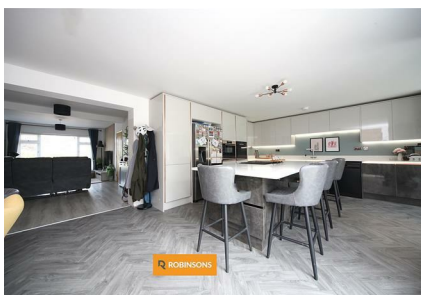
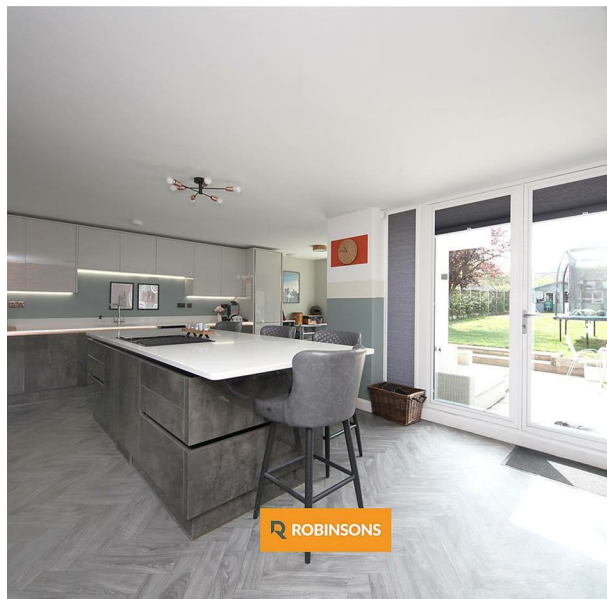
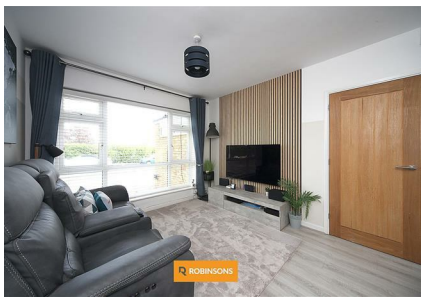
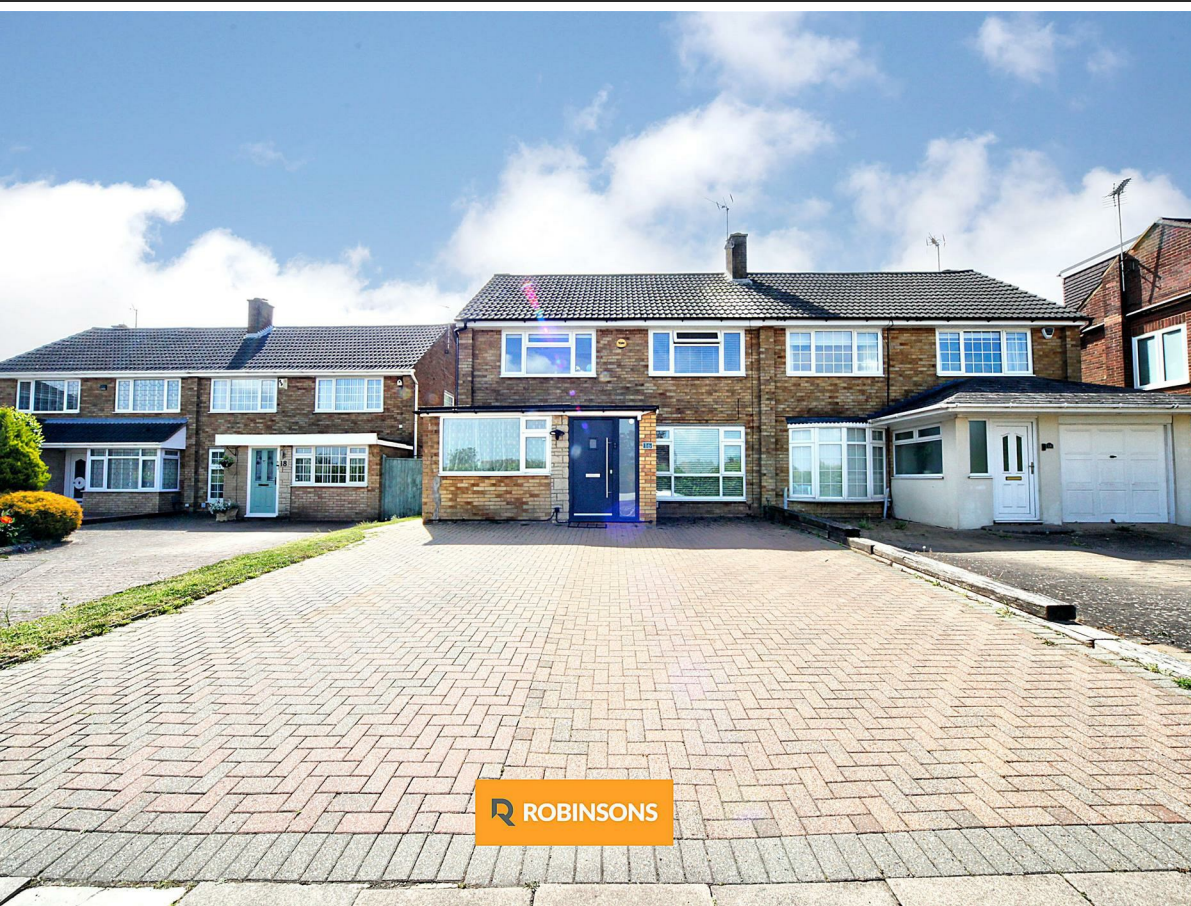


16 St. Christophers Close, Dunstable, Bedfordshire, LU5 4PD
£475,000



A DECEPTIVELY SPACIOUS FOUR BEDROOM SEMI DETACHED FAMILY HOME WITH A LARGE REAR EXTENSION, FEATURING A STUNNING OPEN PLAN KITCHEN / DINING SPACE PERFECT FOR ENTERTAINING, PLUS A SOUTH FACING REAR GARDEN.

The property has been well maintained throughout and offers spacious accommodation across two floors. The ground floor includes an entrance hallway, spacious living room, modern shower room, separate utility room and a versatile fourth bedroom which is currently being utilised as a home office with potential to turn into playroom or additional reception room. To the rear is the standout feature of the home, a stunning extended kitchen / diner measuring over 23ft in length, offering ample worktop and storage space alongside plenty of room for entertaining and family dining.

On the first floor are three further well proportioned bedrooms and a family bathroom. The property further benefits from a modern combi boiler installed approximately two years ago.

Outside, the property offers off road parking to the front, whilst the rear garden provides a private enclosed outdoor space ideal for families and entertaining.



Total Area: 136.6 m² ... 1471 ft²

Floorplan produced by Woodside Photography
Floorplan is for illustration purposes only and all measurements are approximate



20 West Street
Dunstable
Bedfordshire
LU6 1SX
01582 661112
sales@robinsons-estates.co.uk
<https://www.robinsons-estates.co.uk>

